



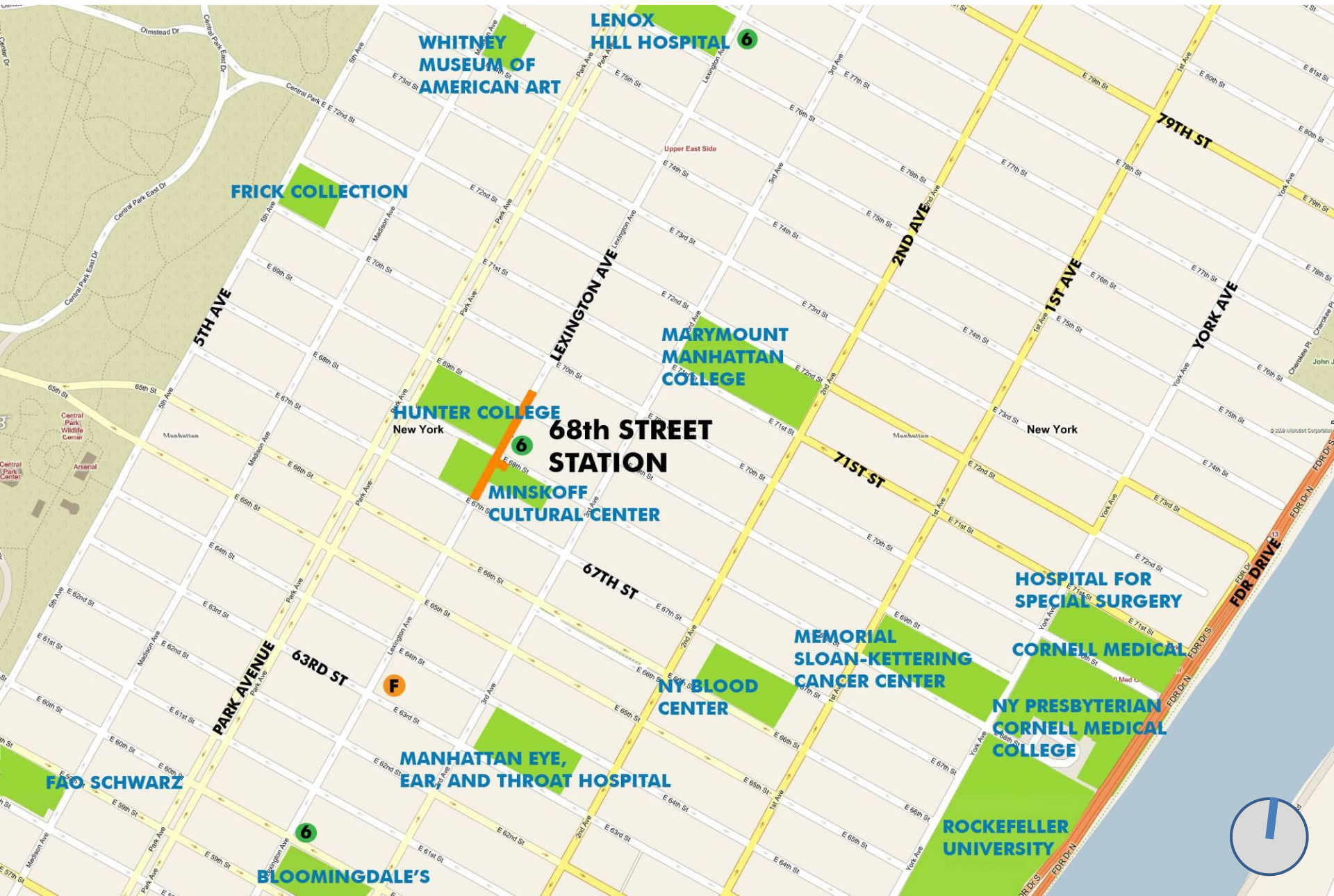
ADA ELEVATORS AT 68TH STREET STATION

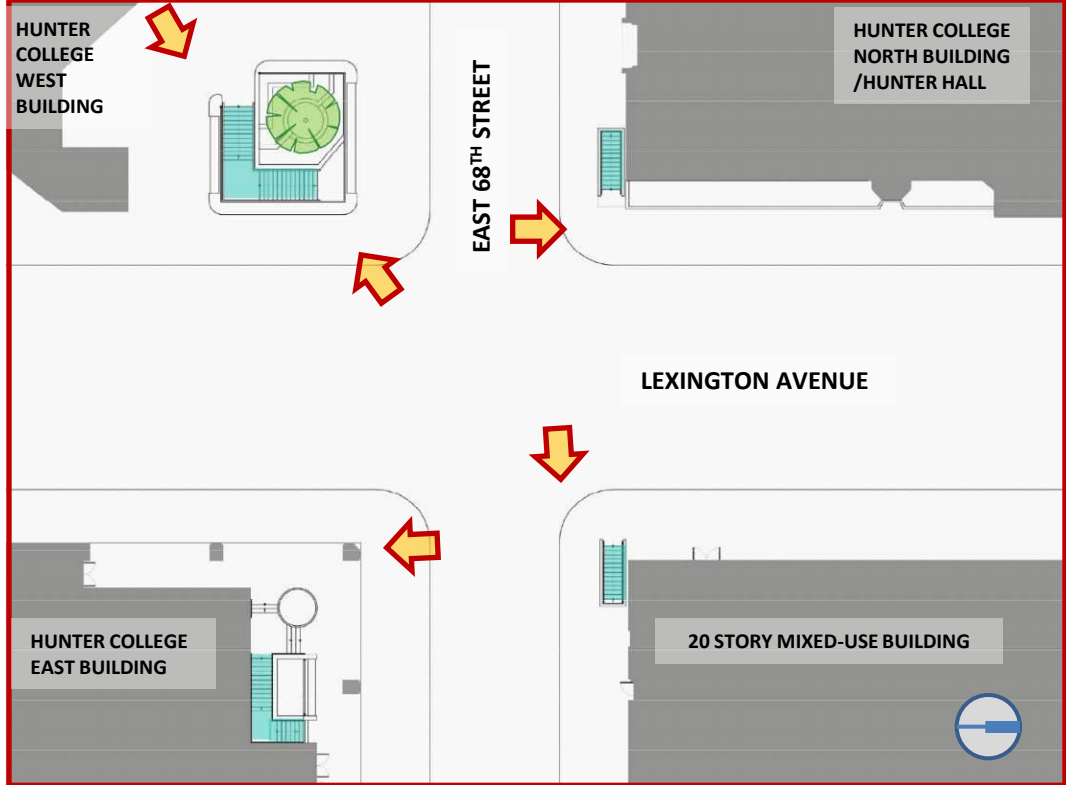
LEXINGTON AVENUE LINE (IRT)
BOROUGH OF MANHATTAN

SCOPE OF WORK

- **Installation of 3 ADA Elevators**
- **Widen Street Stairs at 68th Street NE & SE Corners**
- **New Platform Stairs at 69th Street**

UPPER EAST SIDE

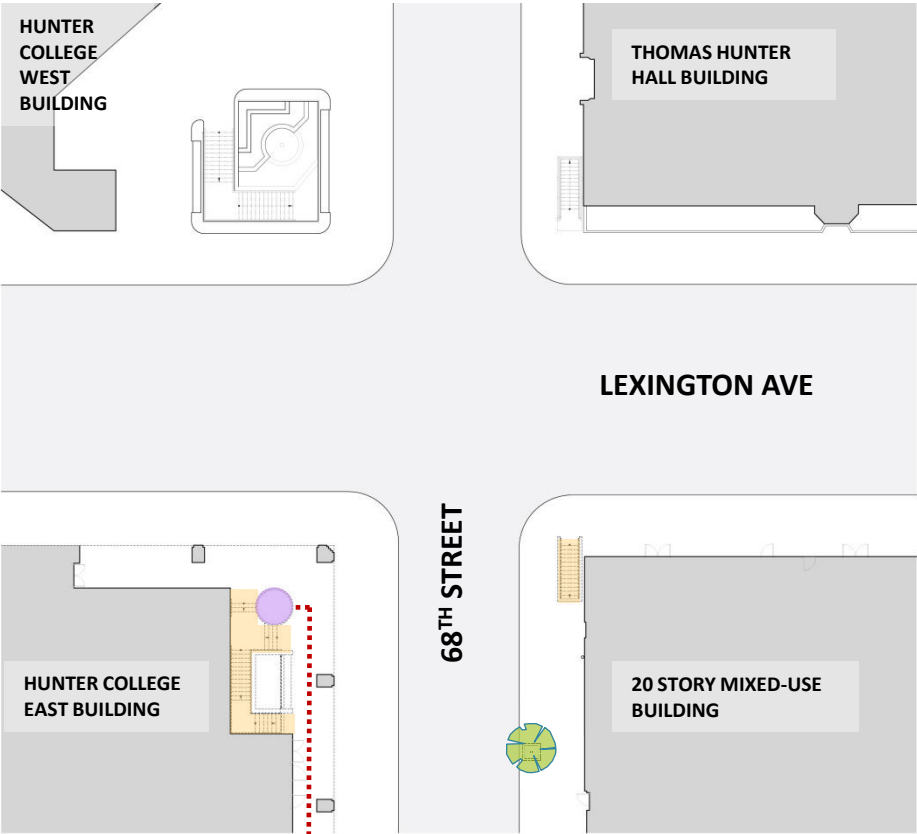




**EXISTING
STREET LEVEL
PLAN**

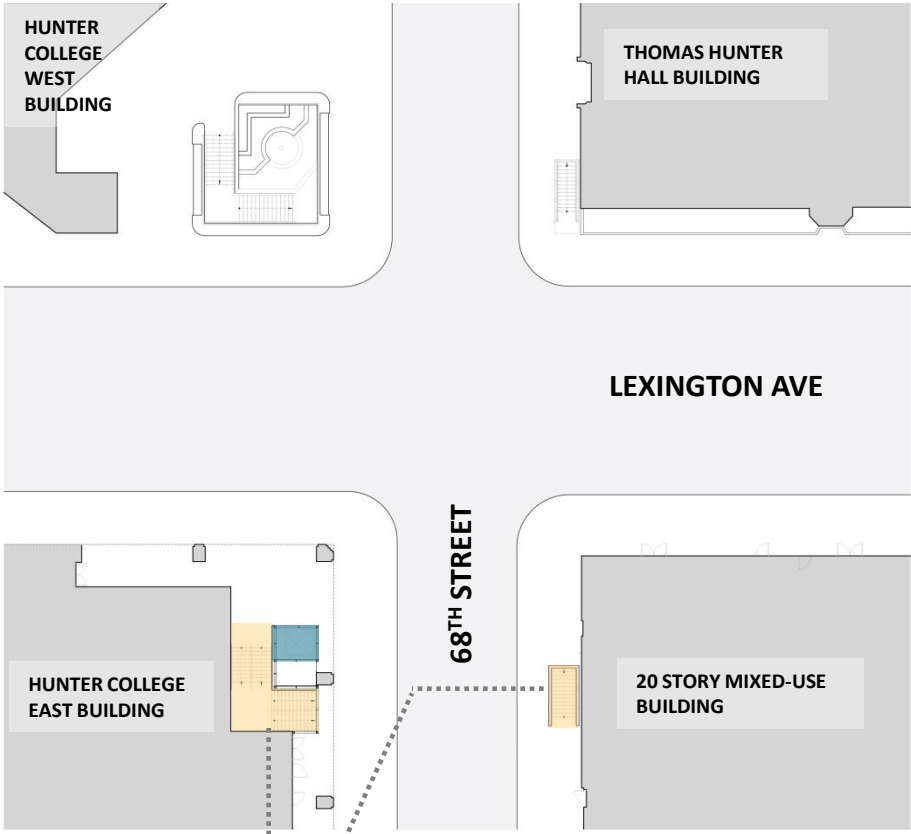


EXISTING STREET PLAN



FLOWER SHOP

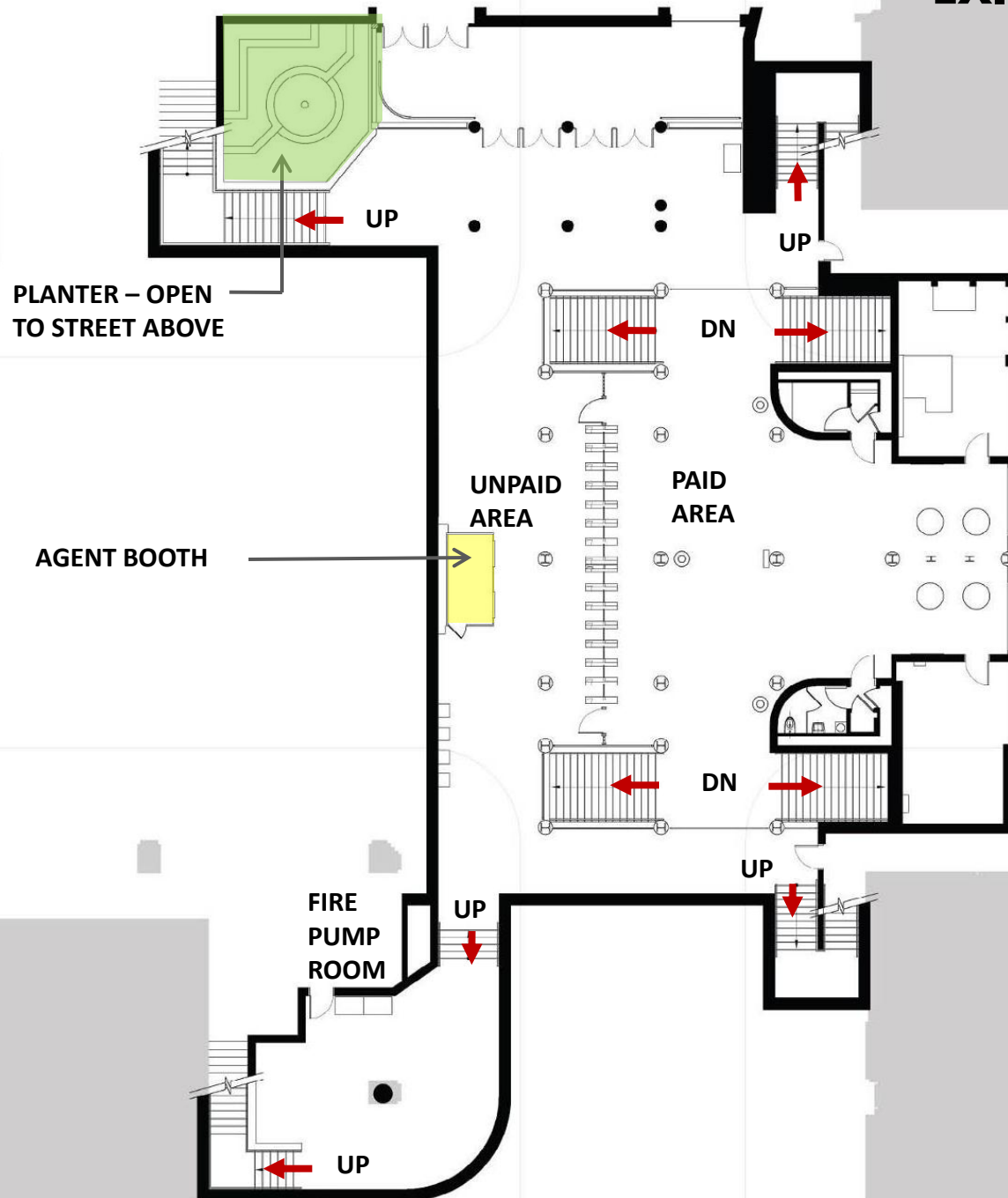
NEW STREET PLAN



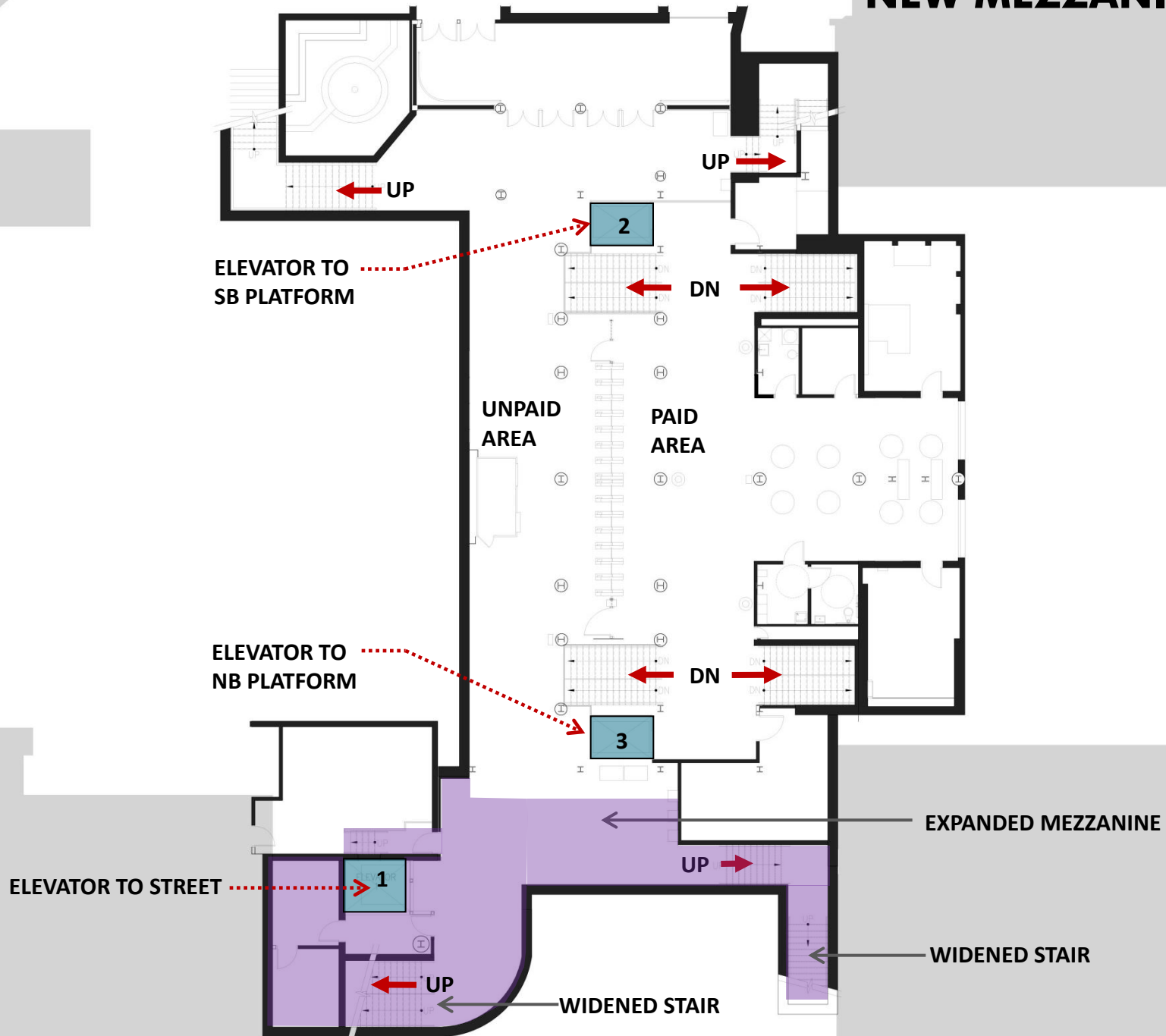
RECONFIGURED SE ENTRANCE
REVERSED NE STAIR

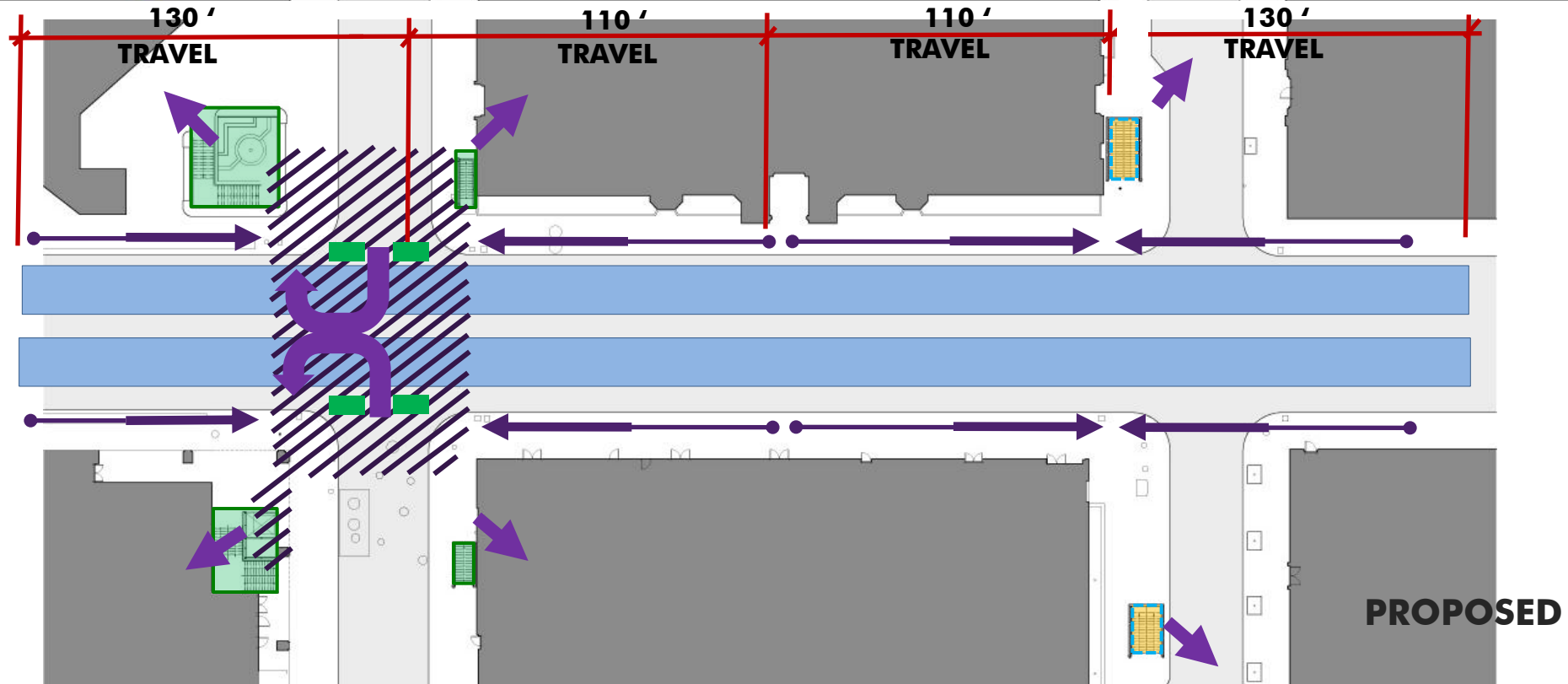
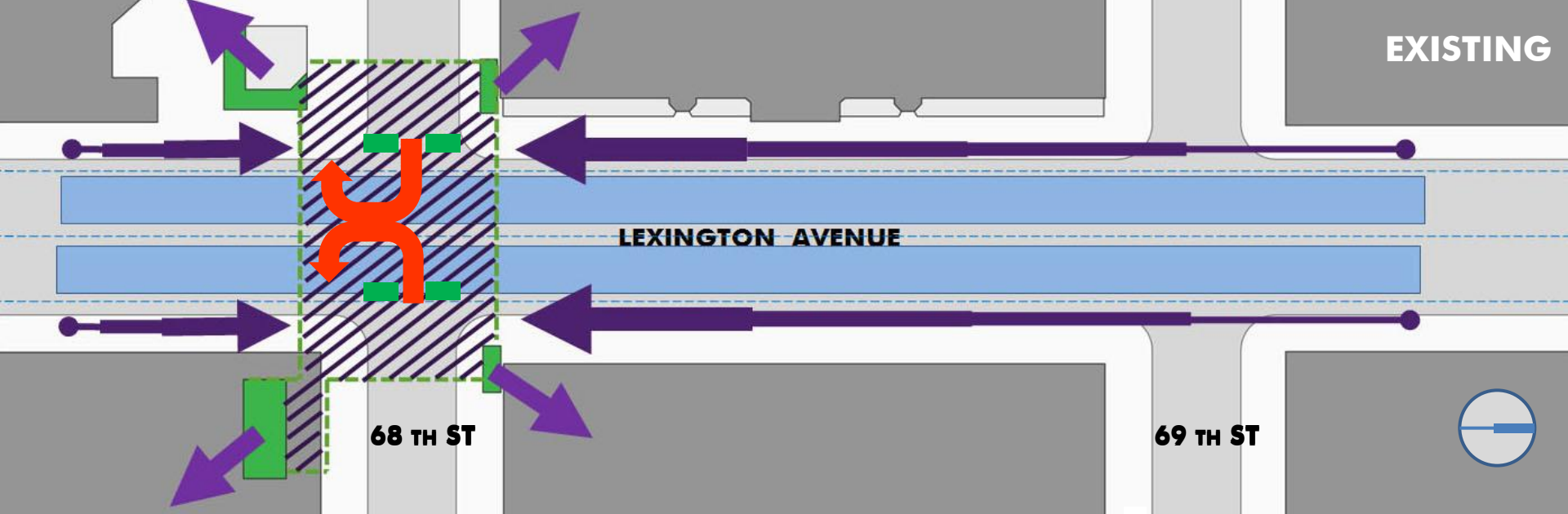


EXISTING MEZZANINE LEVEL PLAN

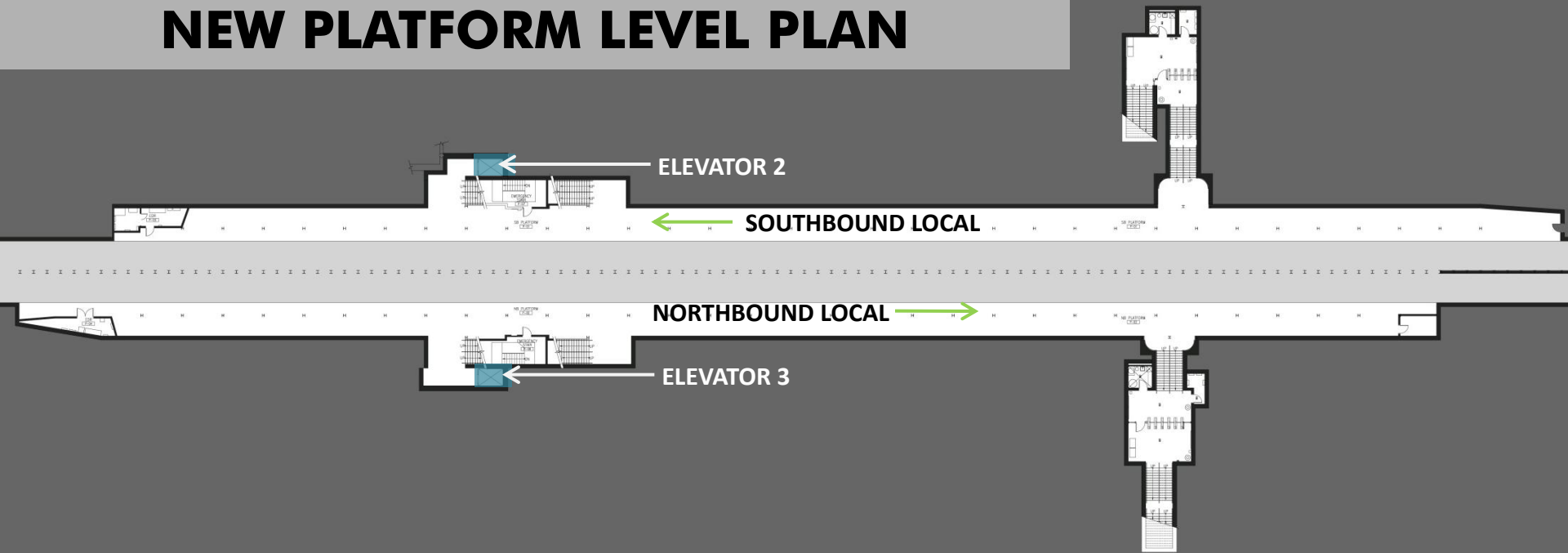


NEW MEZZANINE PLAN

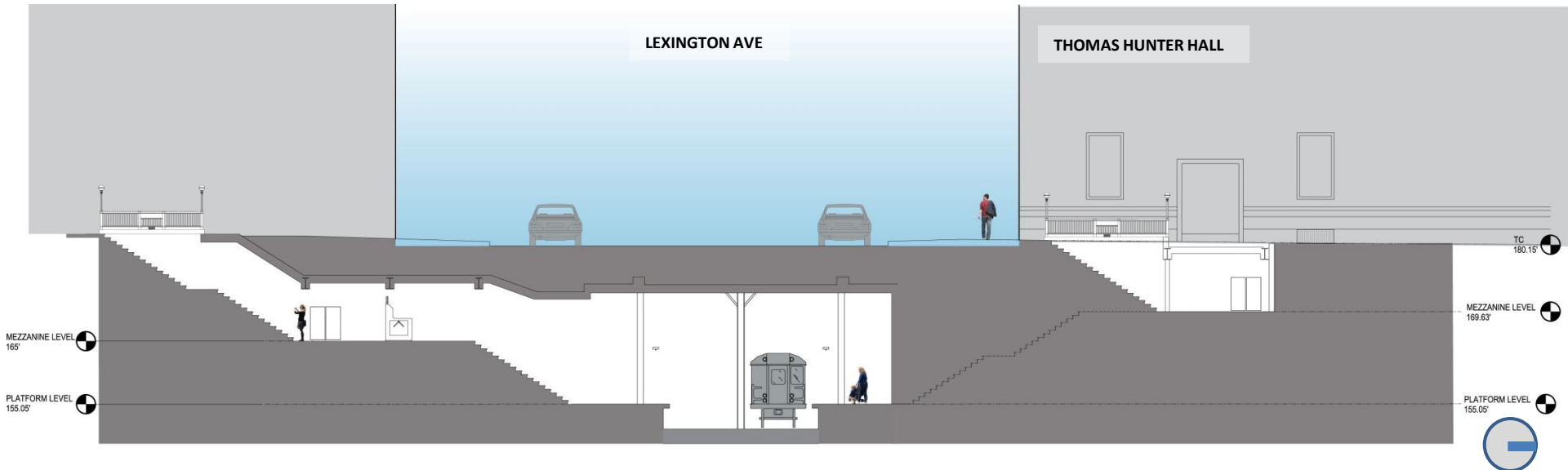




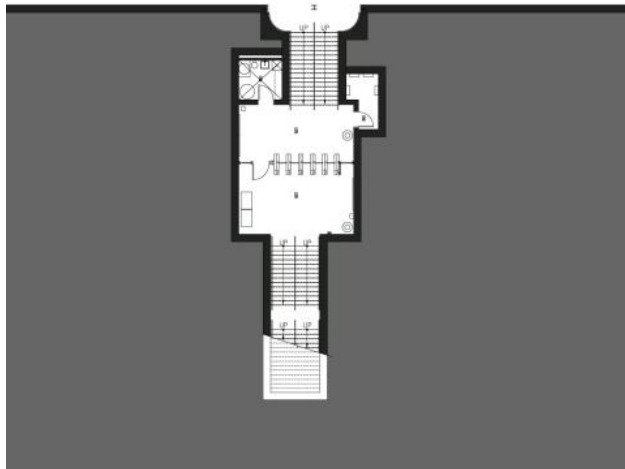
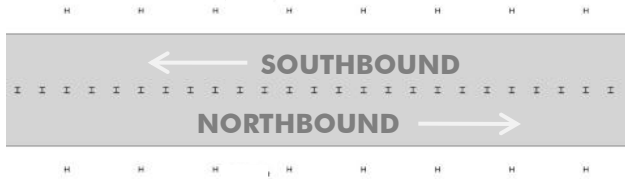
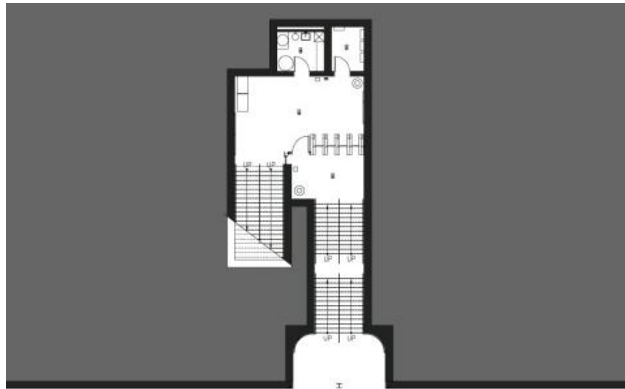
NEW PLATFORM LEVEL PLAN



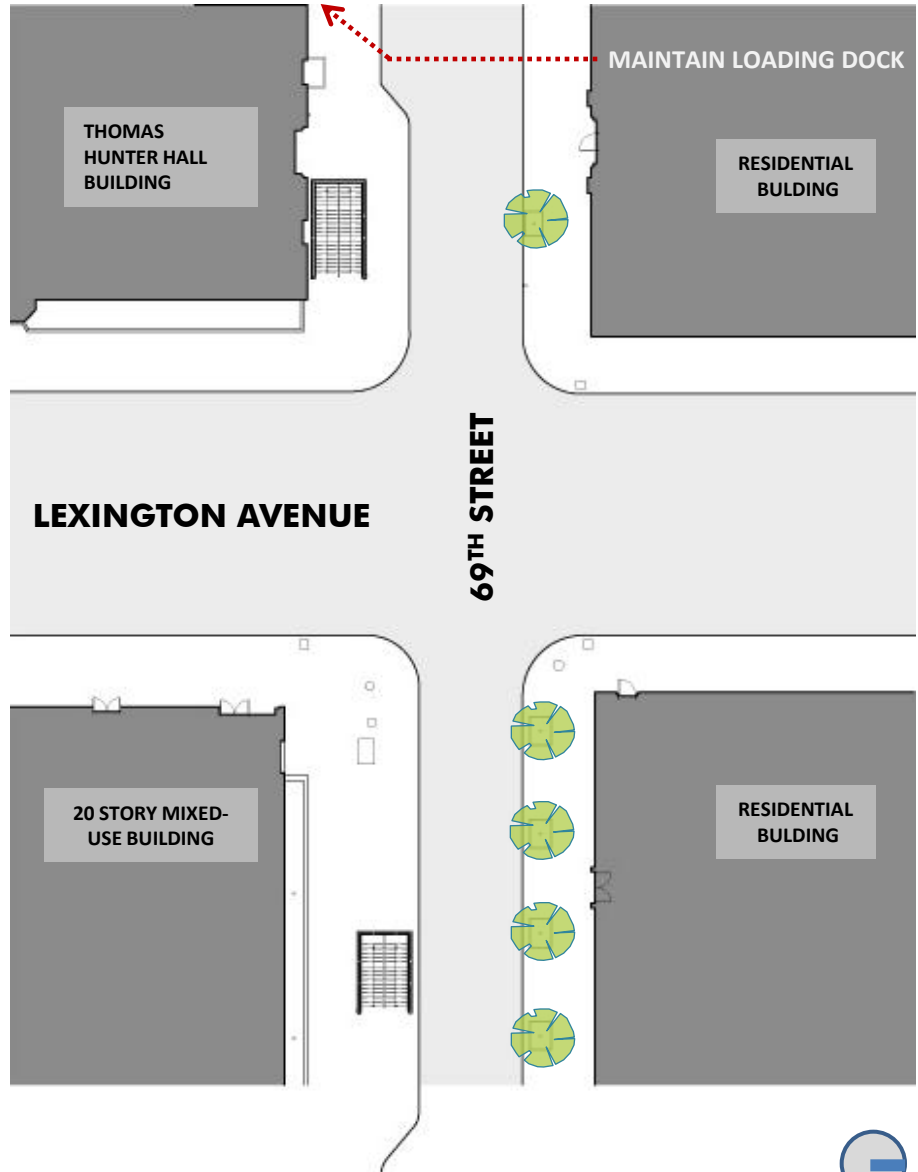
SECTION ALONG 69TH STREET



MEZZANINE LEVEL



STREEL LEVEL



SCHEDULE

- **Anticipated Award: 3rd Quarter of 2012**
- **Construction Duration: 38 Months**



ADA ELEVATORS AT 68TH STREET STATION

LEXINGTON AVENUE LINE (IRT)
BOROUGH OF MANHATTAN