

Update for Community Board 8

E. 81st Street Pedestrian Bridge

HBPED100M

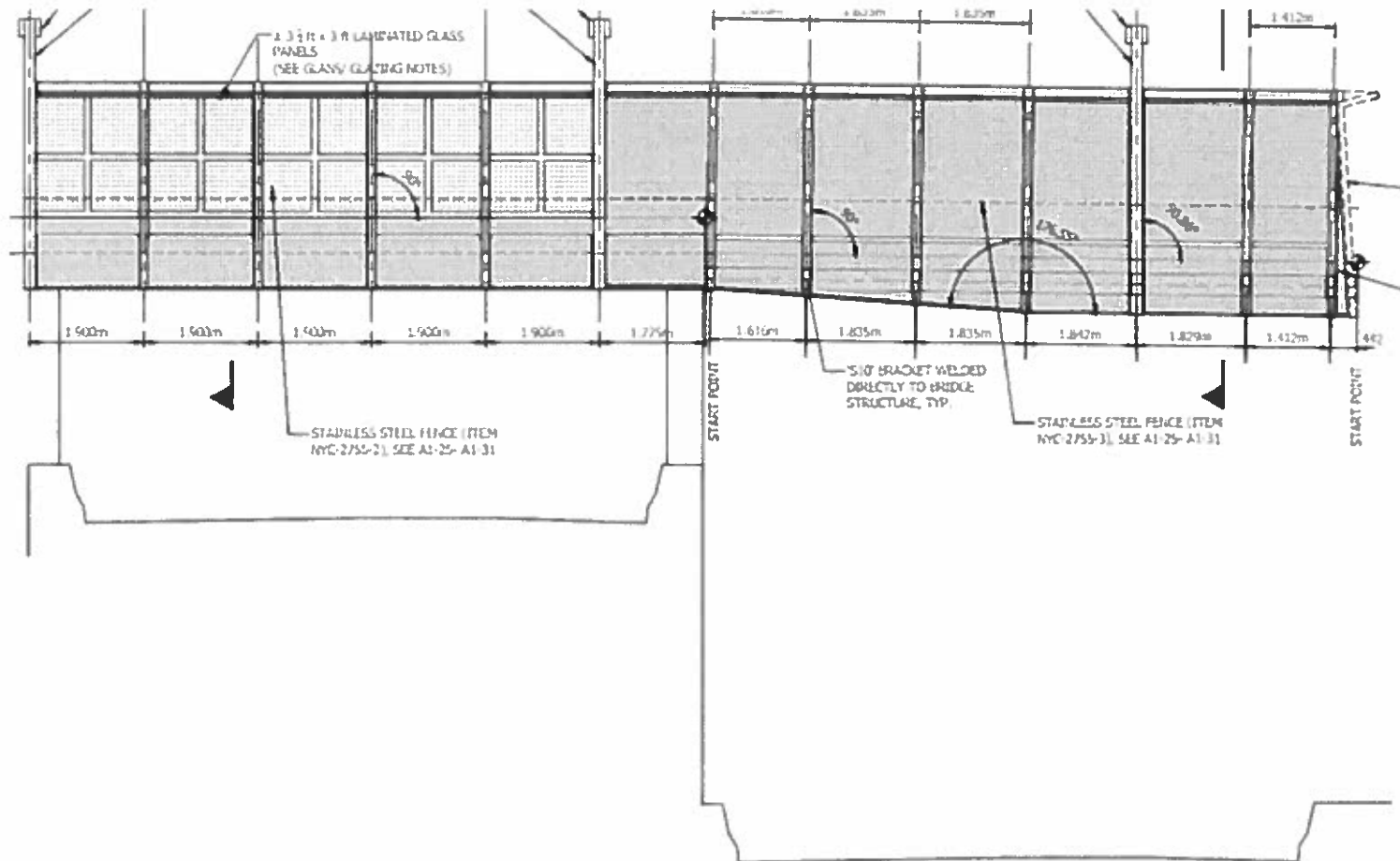
OVERVIEW

- PDC Resolution Design Changes
 - Viewing Windows
 - Lighting Reduction
 - Cul-de-sac ADA Ramp
- Update on Project Progress
- Remaining Work
- Questions & Answers

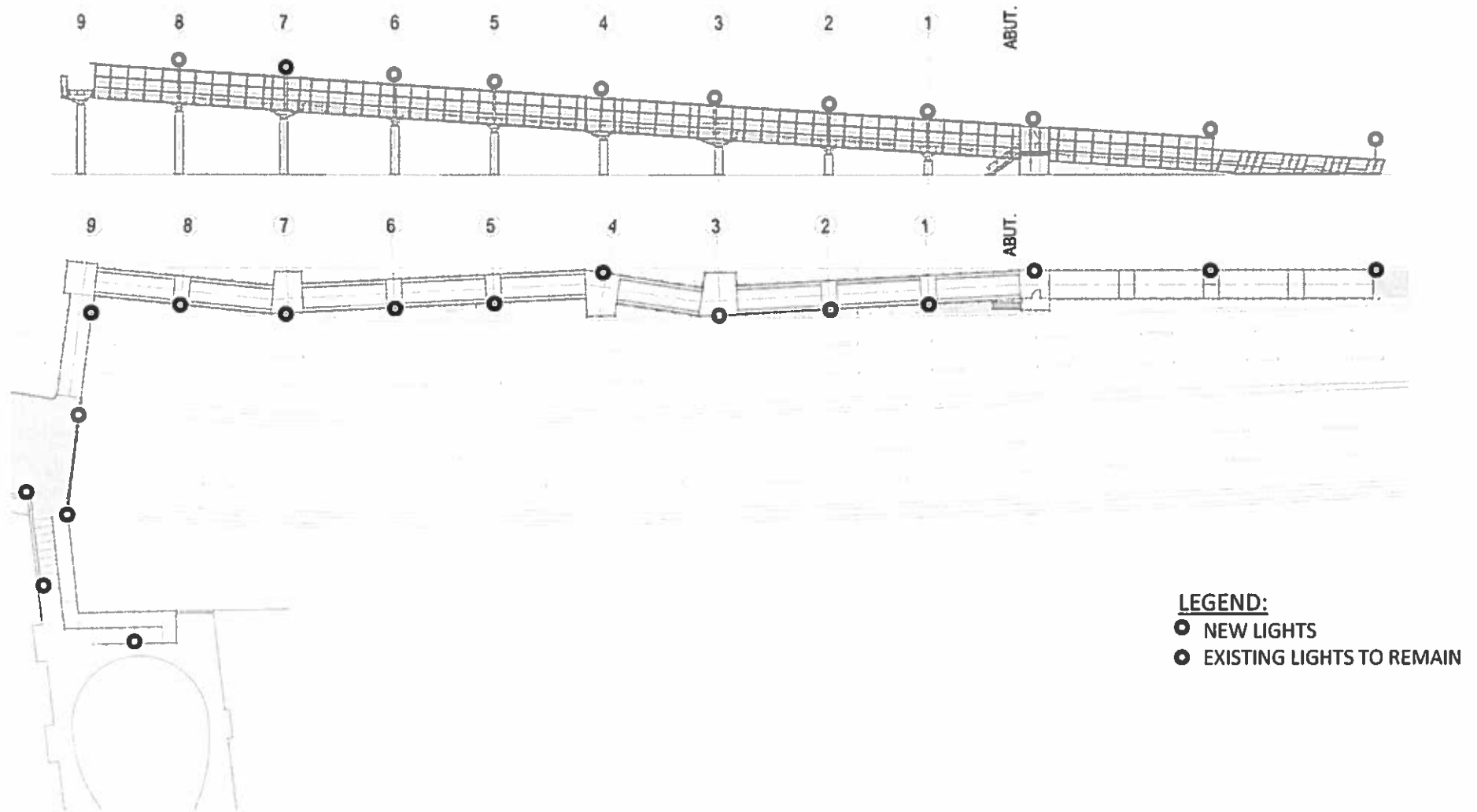
PDC Resolution requested the following changes:

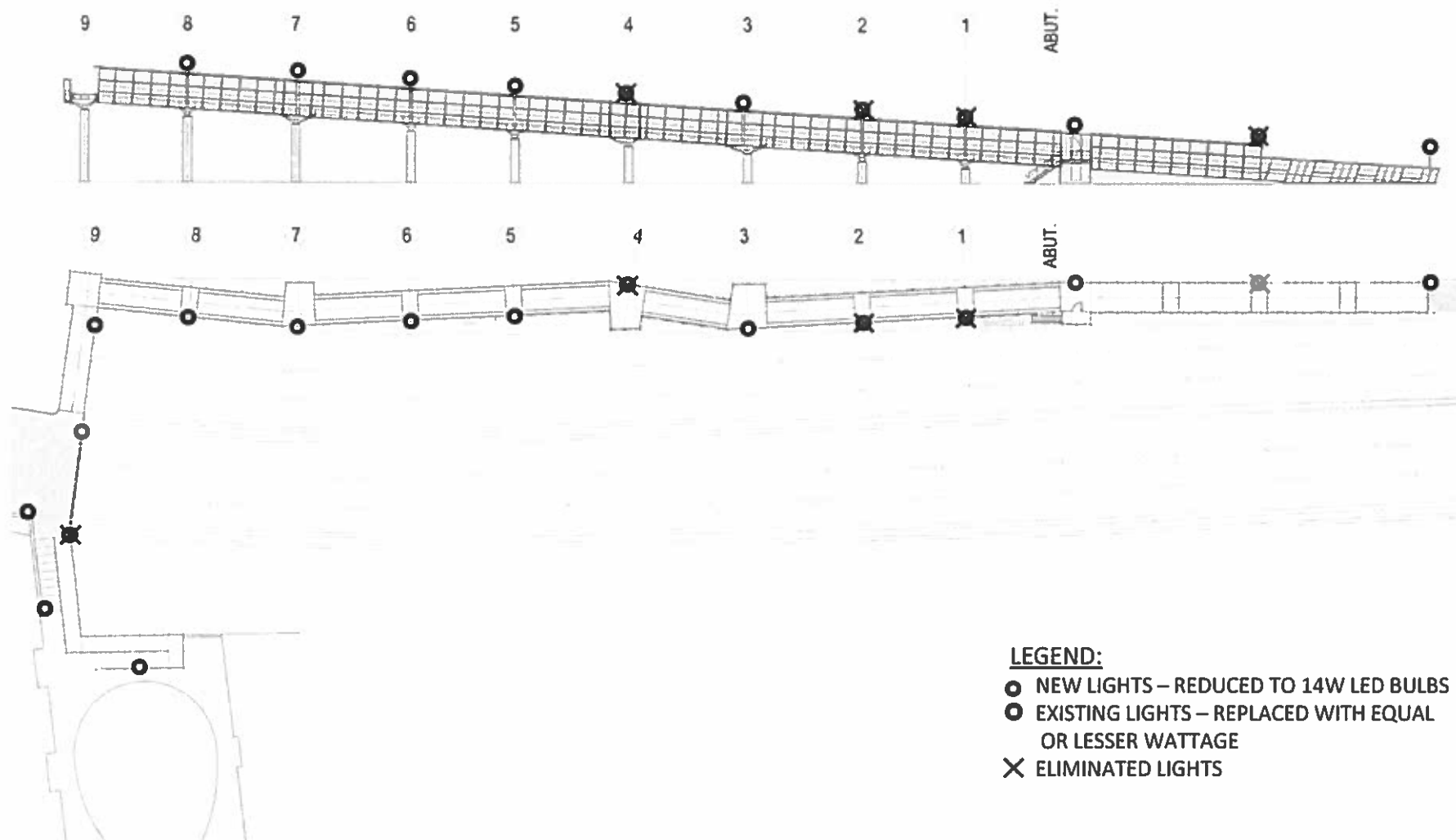
1. Explore the Possibility of creating a viewing window at the southern terminus of John Finley Walk
2. Restudy the lighting fixtures to be more contextually appropriate and confirm the shielding is sufficient
3. Redesign the ADA ramp connecting East 81st Street to John Finely Walk to:
 - a) be more contextually appropriate, particularly with regard to the railing
 - b) eliminate or minimize new lighting
 - c) better resolve the pinch point at the adjacent residential building service entrance

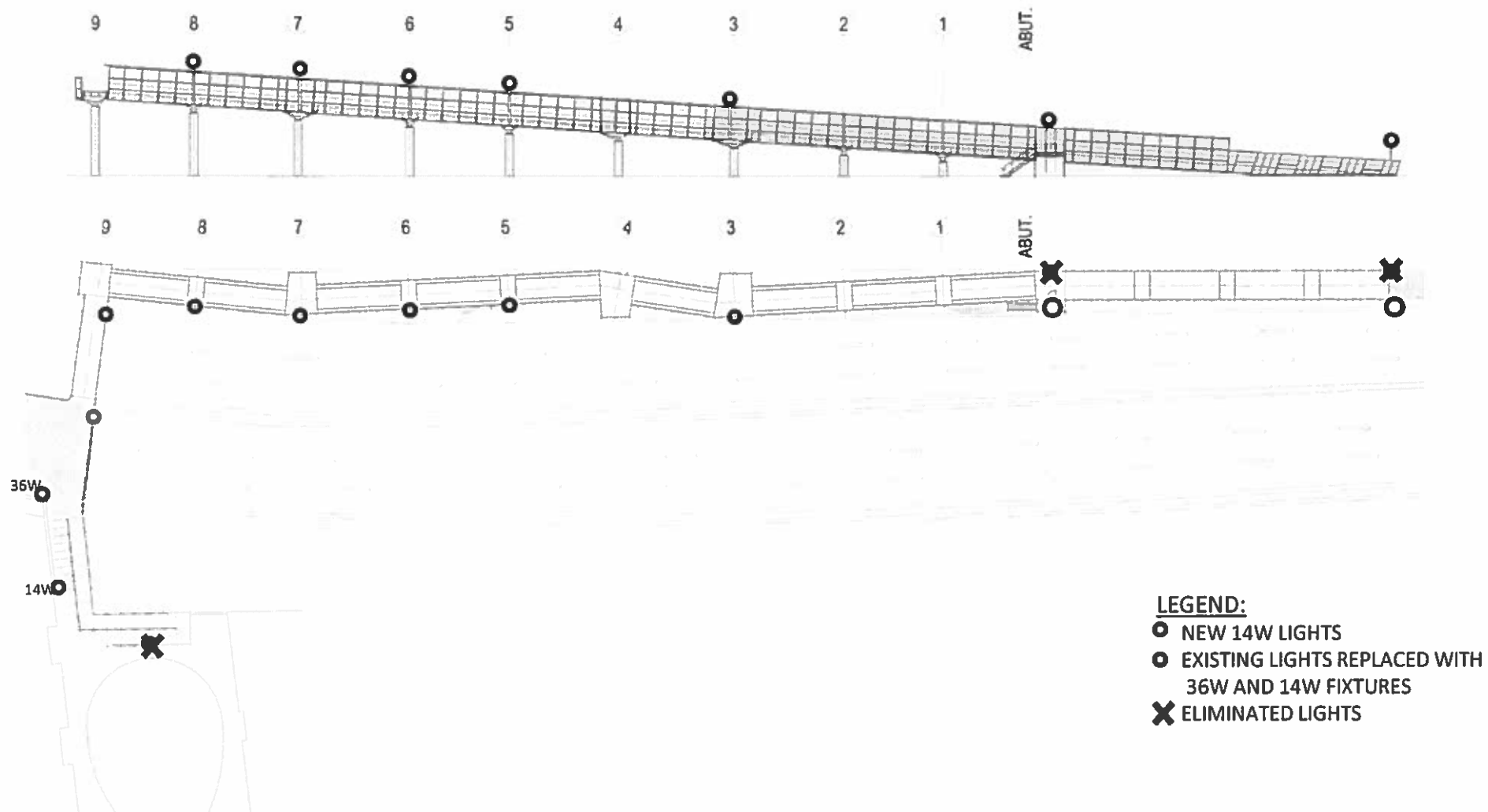








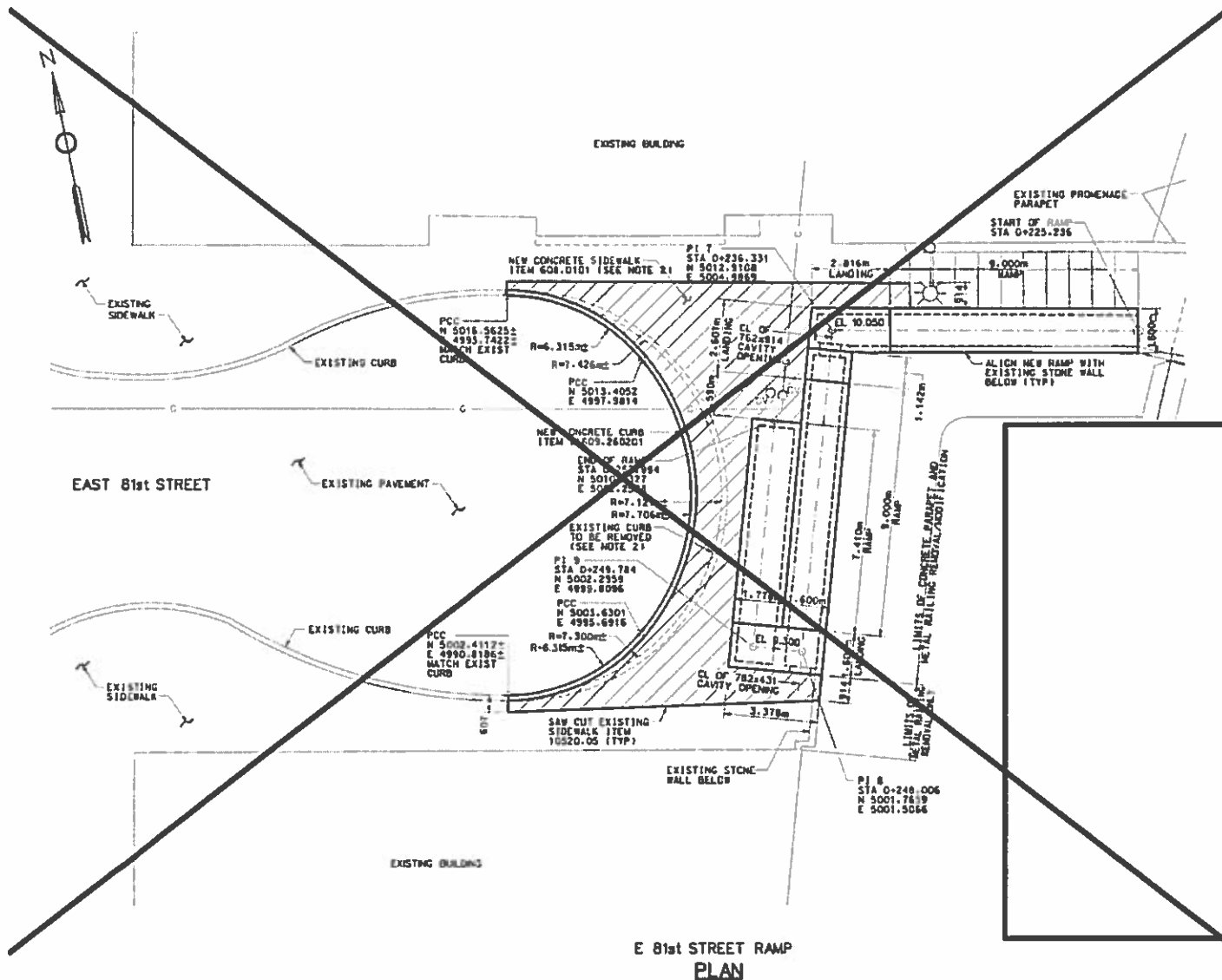




Changes Made on the Lighting

- Reduced new luminaires on pedestrian bridge to lowest possible wattage of 14W.
- Eliminated proposed light poles at the South Abutment, Pier 1, Pier 2, Pier 4, top of the E. 81st Street Stairs, and in the E. 81st Street cul-de-sac.
- Replaced existing Cobrahead luminaires at the 81st Street Stairs/Promenade with equal or lower wattage fixtures.
- Reduced luminance levels as shown in the following table:

	Original Calculation	New Calculation
Max	75 Lux (6.97 Fc)	53.82 Lux (5 Fc)
Average	20 Lux (1.86 Fc)	19.27 Lux (1.79 Fc)



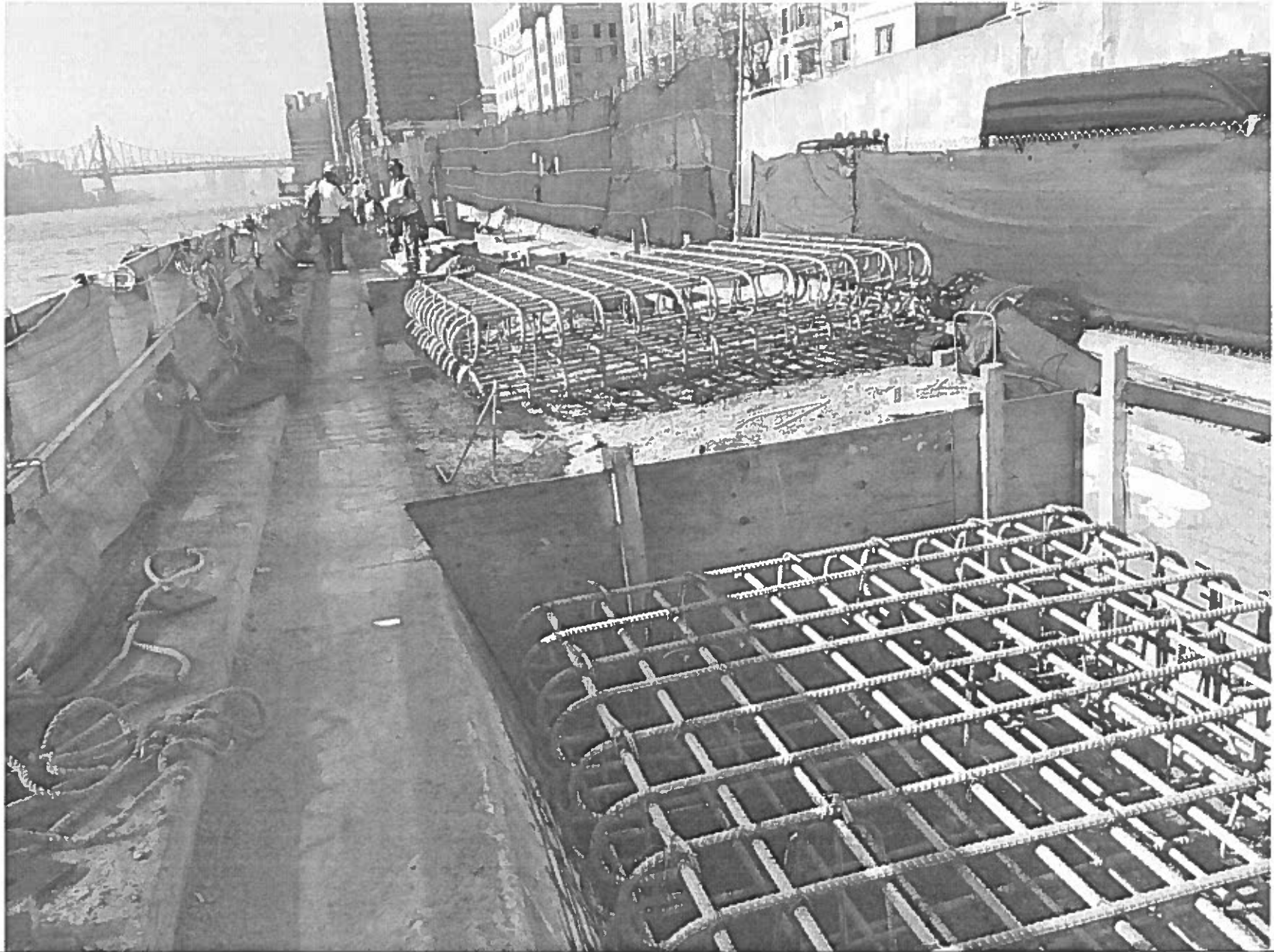
3. The Department of Parks and Recreation has decided to re-evaluate the question regarding access on the promenade holistically. During this evaluation process, DPR removed the cul-de-sac ramp from the scope of this contract.

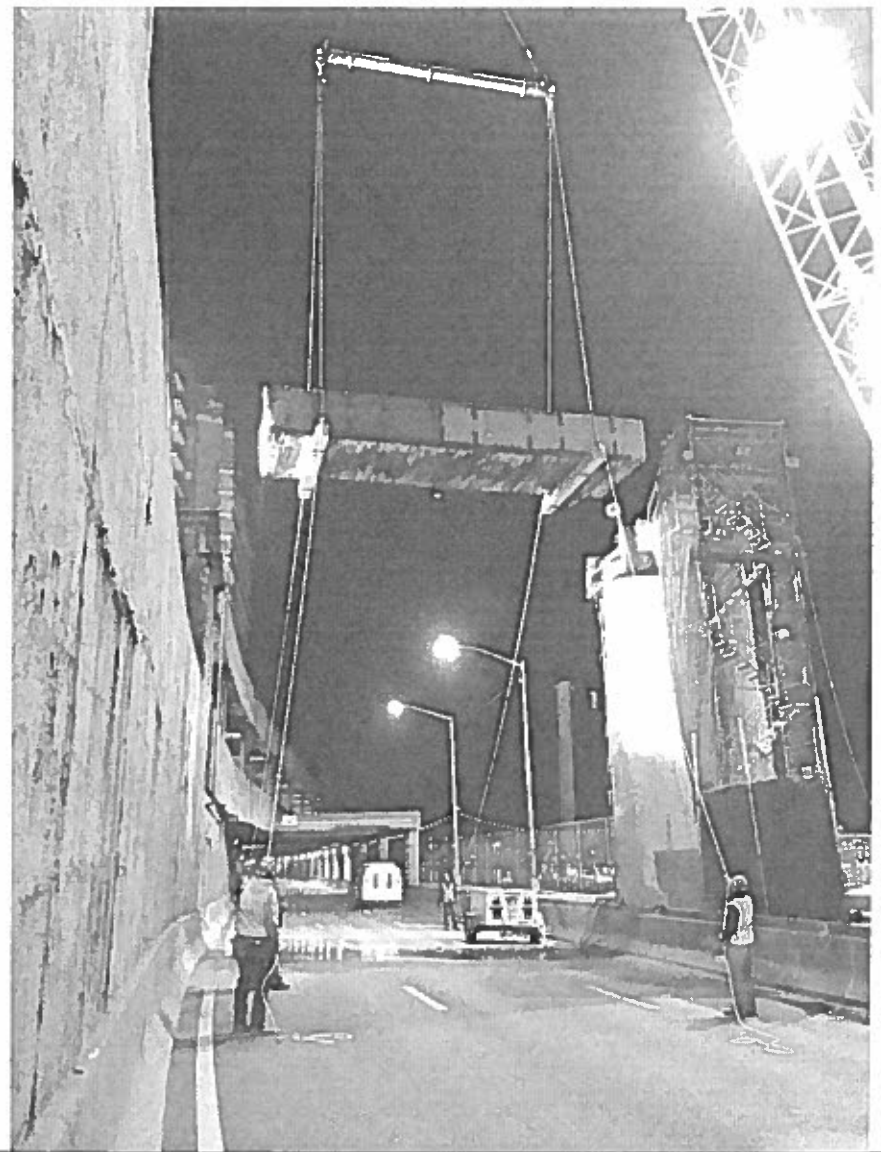
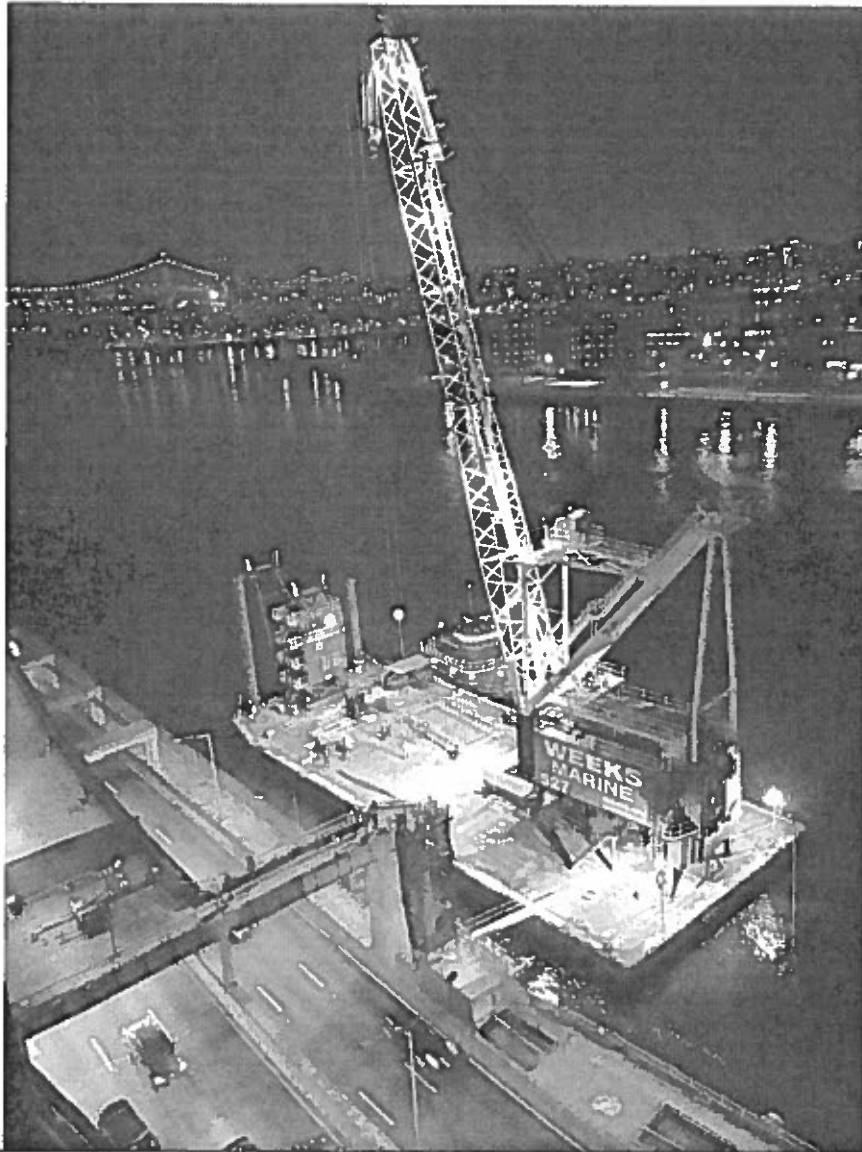
DECEMBER 2015 – SEPTEMBER 2016

UPDATE ON THE PROJECT

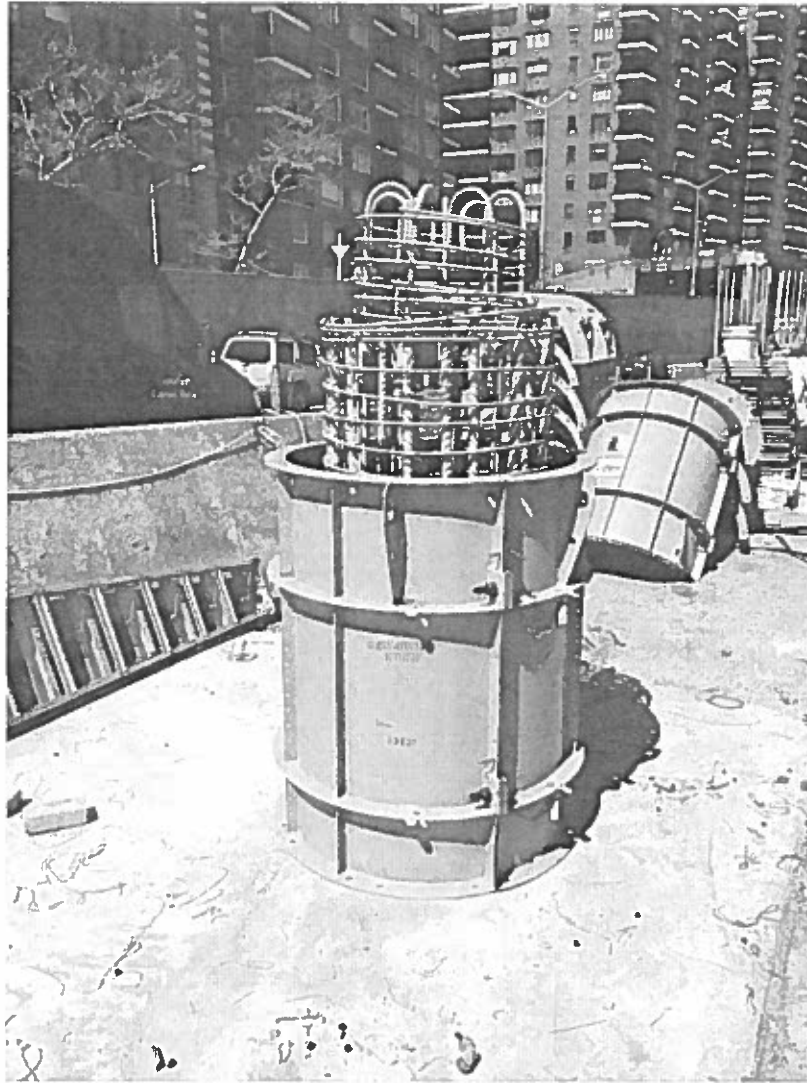


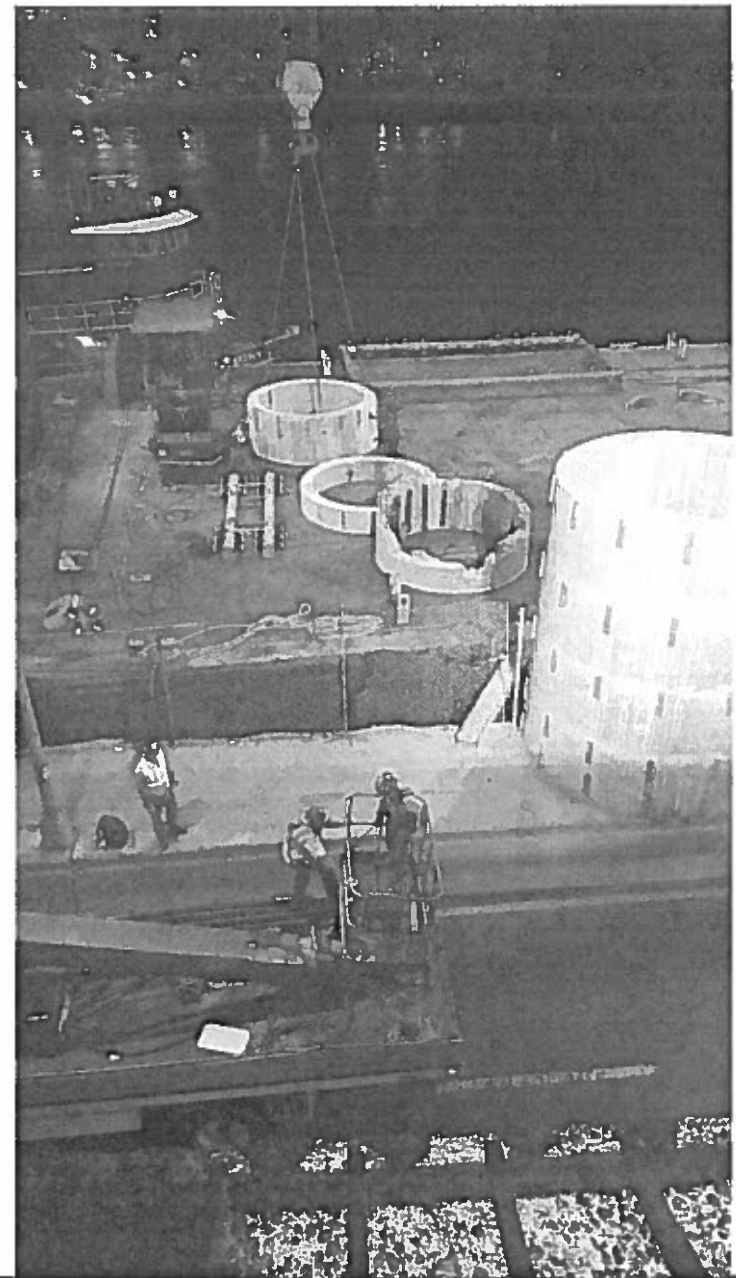
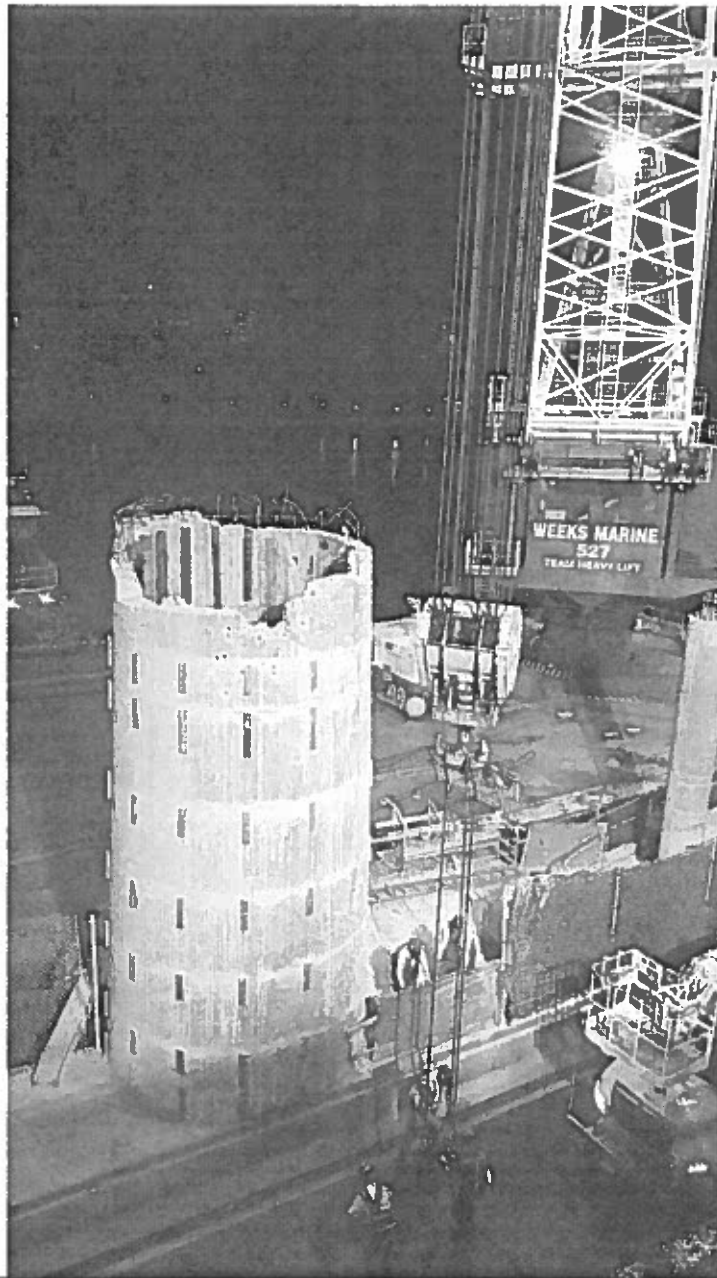


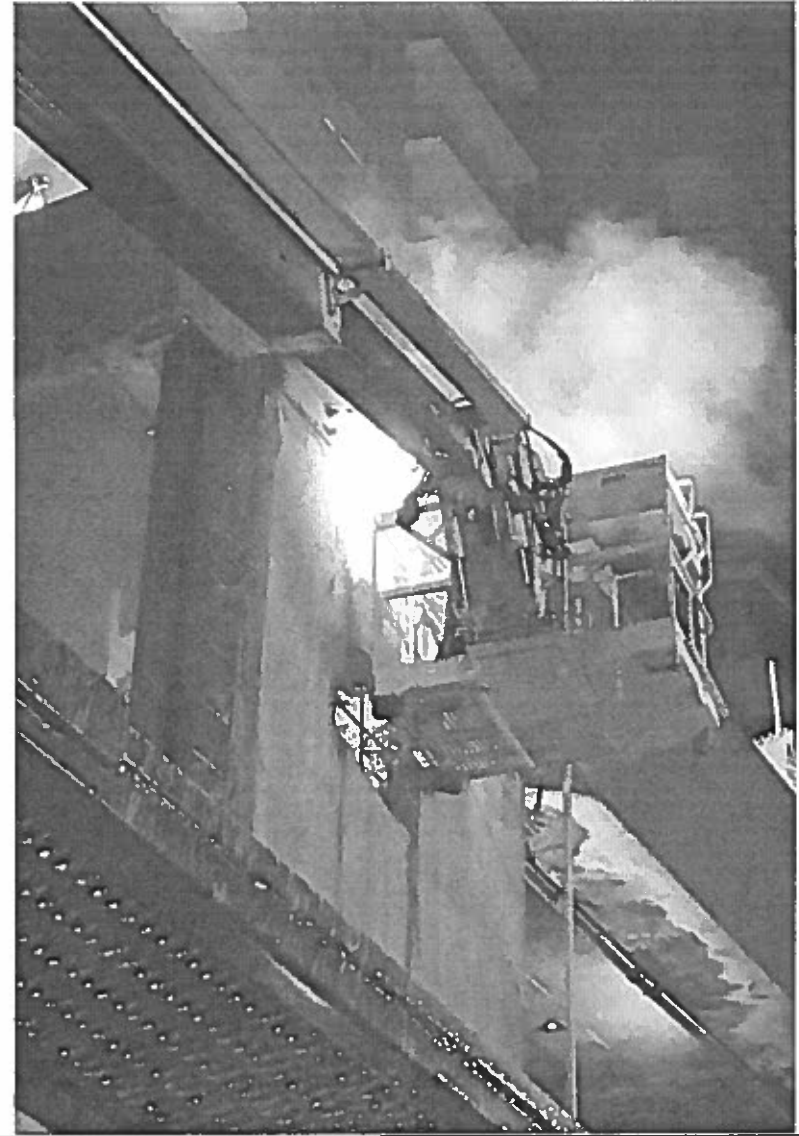
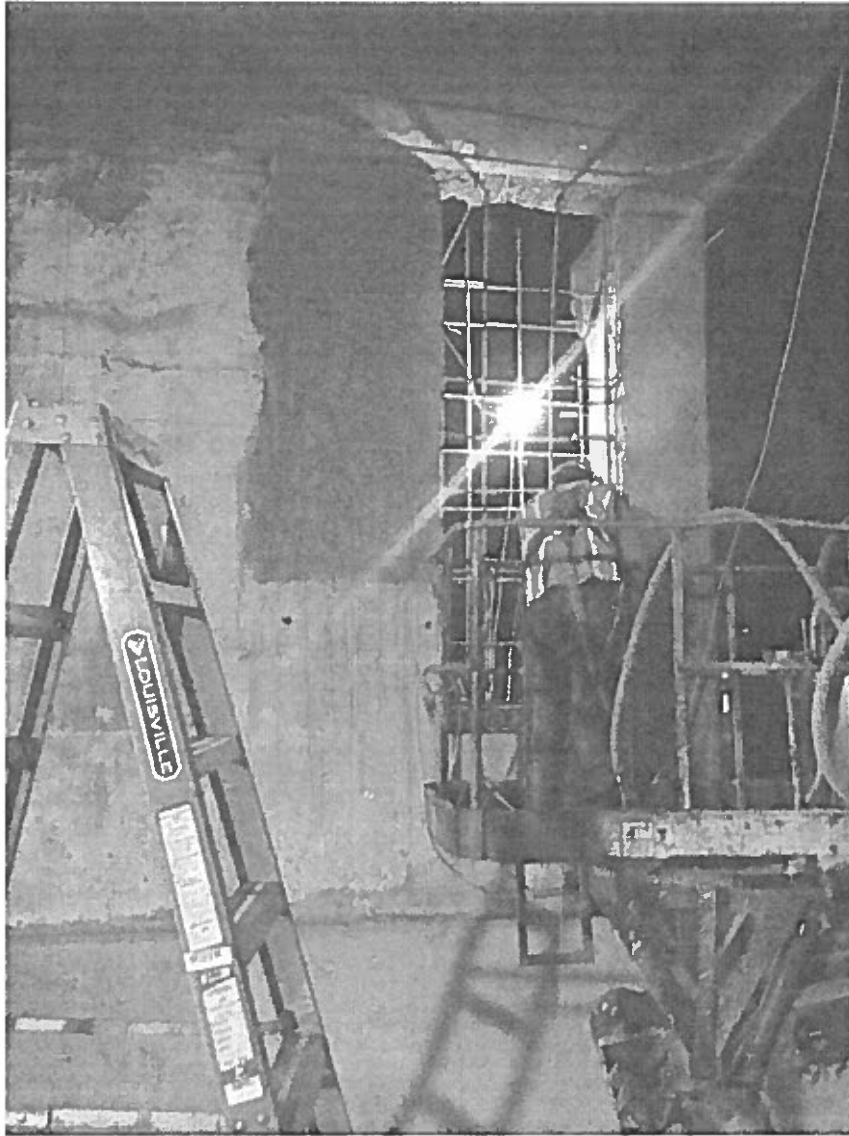














REMAINING WORK

CURRENT ACTIVITY

- Hub/Arm Installation
- South Abutment
- Landscaping on the Esplanade

FUTURE ACTIVITY

- Pier 9: Micropile, Pilecap and Column/Pier Work
- Ramp/Landing Installation
- Stainless Steel Fencing Installation
- Lighting Installation
- Installation of Ramp Railing
- Installation of Ramp Lighting
- Sidewalk Construction

SUBSTANTIAL COMPLETION: Early 2017 (Pending Weather)

QUESTIONS & ANSWERS