

# **Safe Routes to Schools in Multiple Locations Phase 4**

**Community Board 8  
Transportation Committee Meeting  
June 1<sup>st</sup>, 2016**

**Project ID: HWC SCH4A  
Entire Project duration: 2015-2016**

**Contract Value: \$3,358,278.95**

# PROJECT INTENT

The New York City Department of Design and Construction (NYCDDC) is managing a capital construction project to implement school-safety street improvements at various school locations within the borough of Manhattan.

The scope of the project will include, but will not be limited to, the following:

- Reconstructing curb, sidewalk and pedestrian ramps
- Pavement markings
- Neckdown and catch basins

The project is anticipated to be completed by Winter 2016.

# SAFE ROUTES TO SCHOOLS-PHASE 4

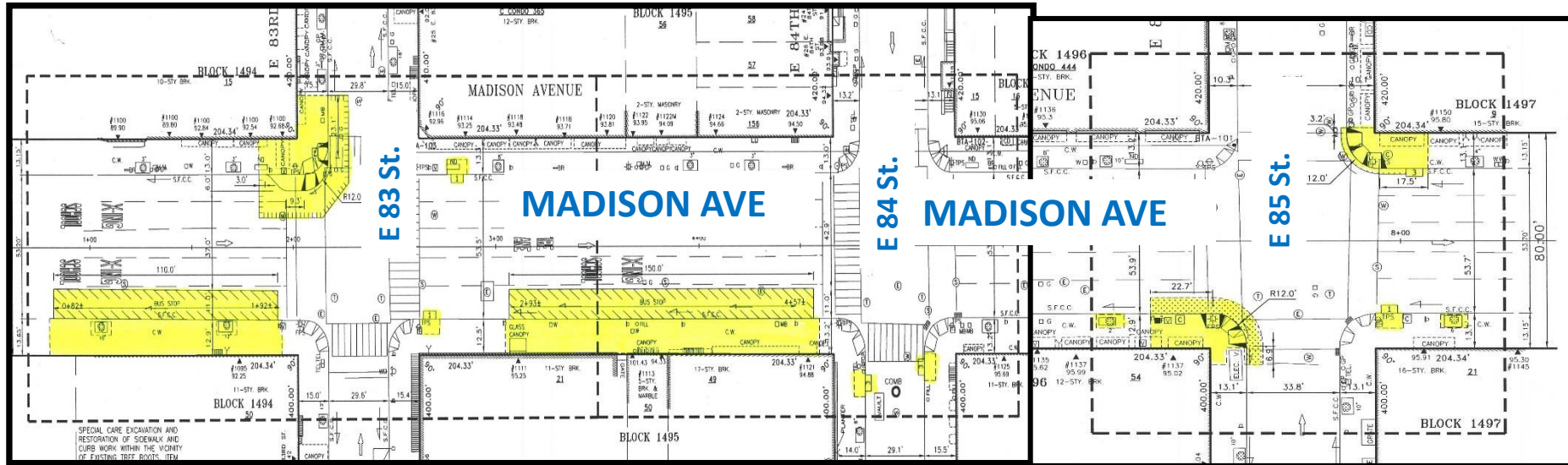
## What are Neckdowns?

- Neckdowns are a traffic calming measure primarily used to extend the sidewalk, reducing crossing distance.
- They allow crossing pedestrians and approaching vehicles to see each other when vehicles parked in a parking lane would otherwise block visibility.

## Some advantages of Neckdowns:

- Shortening crossing distance
- Reduce the speed of turning vehicles
- Improve pedestrian circulation and space





**MADISON AVE / E 83**  
**ST. INTERSECTION**

**SW CORNER:**

SIDEWALK  
NECKDOWN,  
PEDESTRIAN RAMP

**NW CORNER:** CATCH  
BASIN

**NE CORNER:** CATCH  
BASIN

**EAST SIDE B/W E 82**

**St. & E 83 St. :**

REINFORCED CONC.  
BUS PAD, SIDEWALK,  
TREE PIT EXTENSION

**MADISON AVE / E 84 ST. INTERSECTION**

**SE CORNER:** CATCH BASIN

**NE CORNER:** CATCH BASIN

**EAST SIDE B/W E 83 St. & E 84 St. :** REINFORCED  
CONC. BUS PAD, SIDEWALK

**MADISON AVE / E 85 ST.**  
**INTERSECTION**

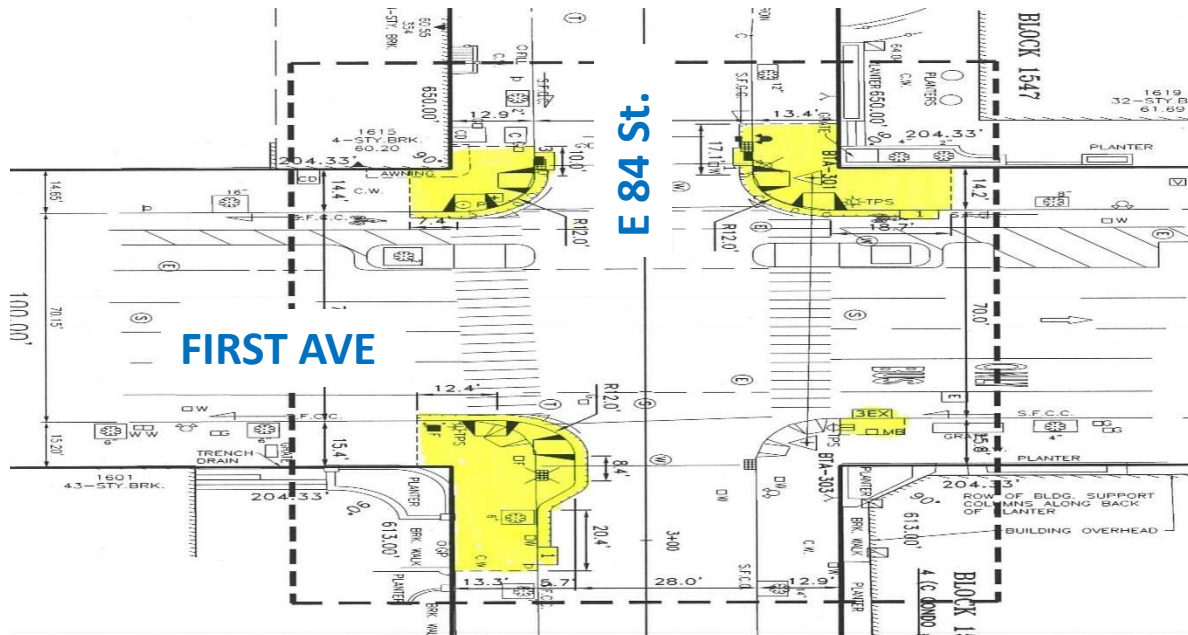
**SE CORNER:**

SIDEWALK,  
PEDESTRIAN RAMP,  
TREE PIT EXTENSION

**NE CORNER:** CATCH  
BASIN, TREE PIT  
EXTENSION

**NW CORNER:**

SIDEWALK,  
PEDESTRIAN RAMP



## FIRST AVE / E 84 ST. INTERSECTION

SW CORNER: SIDEWALK, CURB, PEDESTRIAN RAMP & CATCH BASIN

SE CORNER: SIDEWALK NECKDOWN, CURB, PEDESTRIAN RAMP, CATCH BASIN & FIRE ALARM

NW CORNER: SIDEWALK, CURB, PEDESTRIAN RAMP, CATCH BASIN & FIRE HYDRANT

NE CORNER: CATCH BASIN





### LEXINGTON AVE / E 83 ST. INTERSECTION

SW CORNER: CATCH BASIN

NW CORNER: CATCH BASIN

SE CORNER SIDEWALK  
NECKDOWN, CURB,  
PEDESTRIAN RAMP, TREE PIT  
EXTENSION

WEST SIDE B/W E 82 St. & E 83  
St. : REINFORCED CONC. BUS  
PAD, SIDEWALK

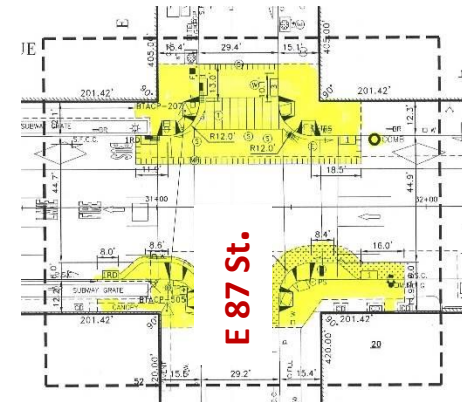
### LEXINGTON AVE / E 84 ST. INTERSECTION

SW CORNER: CATCH  
BASINS

SE CORNER: SIDEWALK,  
CURB, PEDESTRIAN  
RAMP, CATCH BASIN &  
FIRE HYDRANT

NE CORNER SIDEWALK  
NECKDOWN, CURB,  
PEDESTRIAN RAMP &  
CATCH BASIN

NW CORNER: CATCH  
BASIN



### LEXINGTON AVE / E 87 ST. INTERSECTION

SW CORNER: SIDEWALK,  
CURB, PEDESTRIAN RAMP,  
CATCH BASINS & FIRE ALARM

SE CORNER: SIDEWALK  
NECKDOWN, CURB,  
PEDESTRIAN RAMP & CATCH  
BASIN

NE CORNER SIDEWALK  
NECKDOWN, CURB,  
PEDESTRIAN RAMP, CATCH  
BASIN & FIRE HYDRANT

NW CORNER: SIDEWALK,  
CURB, PEDESTRIAN RAMP,  
CATCH BASINS

WEST SIDE OF LEX. AVE / E 87  
INTERSECTION: STREET  
RECONSTRUCTION



# ALLOWABLE WORK HOURS: (as per NYC DOT Stipulations)

## Madison Avenue Intersections (East 83<sup>rd</sup>, East 84<sup>th</sup>, East 85<sup>th</sup> Streets)

- 9AM - 2PM: Monday-Friday
- 8AM - 4PM: Saturday

## Park Avenue Intersections (East 85<sup>th</sup> & East 87<sup>th</sup> Streets)

- 9AM - 2PM: Monday-Friday
- 8AM - 4PM: Saturday

## Lexington Avenue Intersections (East 83<sup>rd</sup>, East 84<sup>th</sup>, East 87<sup>th</sup> Streets)

- 9AM - 2PM: Monday-Friday
- 8AM - 4PM: Saturday

## First Avenue Intersection (East 84<sup>th</sup> Street)

- 7AM - 2PM: Monday-Friday
- 8AM - 4PM: Saturday



# COMMUNITY IMPACTS & WHAT TO EXPECT

# COMMUNITY IMPACTS

## Office of Community Outreach & Notification

- Pedestrian access to buildings will be maintained at all times
- Certain operations will be noisy; DDC will monitor operations and work within DEP Noise Code regulations.
- Merchant deliveries and drop-offs may be affected. Coordination will be necessary in some areas and addressed on a case by case basis (CCL will be in contact with those affected).
- Parking may be temporarily restricted
- Signs will be posted where necessary and advance notification provided.
- Garbage/Trash pick up will be affected. CCL will assist with coordination between public and DOS or Private Carters

# COMMUNITY IMPACTS

## Office of Community Outreach & Notification

### Water Service Interruptions:

- 72hrs advisory notice will be provided followed by a 24hr confirmation/cancellation
- Specific instructions will be provided prior to water shutoff
- The Community Construction Liaison (CCL) will communicate project details in advance of all operations

### Special Needs:

- Individuals with special needs should contact the CCL
- DDC field staff will work specifically with those individuals to minimize the inconvenience

### Rodent Control:

- Bait stations are placed within the construction zone as needed
- Rodent activity will be monitored

# COMMUNITY OUTREACH AND NOTIFICATION

# COMMUNITY OUTREACH

## Office of Community Outreach & Notification

- Pre-construction presentations to Community Board
- On-Site Community Construction Liaisons
- Consistent communication with Community Boards and other stakeholders (Residents, Businesses, BID, Tenant Associations, etc.)
- Brochures
- Weekly Bulletins
- Special Advisory Notices
- E-mail Alerts
- Newsletters



# Office of Community Outreach & Notification

## Quarterly Monthly Newsletter



The New York City Department of Design and Construction (DDC) is managing a capital construction project MED605684 along Grand Street between Bowery and Essex Street, including each intersection. DDC will install new trunk water mains, new traffic signs, street lighting, replacement distribution water mains, new roadway surface, curbs and sidewalks in certain locations, as well as, rehabilitate sewer, and upgrade private utilities. The entire project is anticipated to be completed by Spring 2017. Phase I has been completed. Phase II began in September 2014.

### Proposed Work Schedule May/June 2015

#### Phase II Daytime work operations include:

- Grand Street: Orchard to Essex Streets
  - Installation of New Distribution Water Main
  - Installation of New Gas Main
- Essex Street Through Grand Street
  - Installation of New Gas Main
- Intersection of Grand & Orchard Streets
  - Installation of New Distribution Water Main
  - Installation of Private Utilities

#### Work Completed to Date (Phase II)

1. New Distribution Water Mains in Grand Street between Bowery & Orchard Streets
2. New Drainage Facilities in Grand Street between Bowery & Orchard Streets

#### Special Needs

Please let the Community Construction Liaison know if there is someone in your household or building that has special needs (elderly, wheelchair user, etc.) so that we can coordinate our construction activities accordingly.

DDC in Your Neighborhood  
Dr. Patricia Pappalardo  
Community Liaison

DDC Website: [www.nyc.gov/ddc](http://www.nyc.gov/ddc)  
DDC Video: [www.nyc.gov/ddcvideo](http://www.nyc.gov/ddcvideo)

**One-way Traffic on Grand St.**  
Forest one-way southbound traffic in some parts of Grand St. throughout Phase II of the project. Detour signs and directions will be posted during the course of this construction.

#### Water Service Interruption

During the course of the project, there will be some water service interruptions. To accommodate replacement, the existing water line will be shut off by closing the valves at the section. Advance notice will be given (planned interruption). Water can be restored at the end of the day.


#### Trash Collection

Proper trash collection can be a bit of a project as large as this but if coordinated, it can be managed with disruption. Please park your trash in designated areas as close to curbside as possible. If you use a private service that your trash collects your trash location, if you aren't sure where to trash, please contact your DCL.

**Community Construction Liaison (CCL)**  
The DDC has assigned Mr. Nikita Sinha as the Community Construction Liaison (CCL) for this project. Nikita for any and all inquiries/comments you may have. Please call 646-432-3000 or Fax: 646-432-3000 or Email: [nikita.sinha@nyc.gov](mailto:nikita.sinha@nyc.gov). Field Office: 110 Lafayette Street, 3rd Floor

**Newsletter Distribution**  
Construction Newsletters for this project distributed regularly within the project Community Board 23 - Manhattan.

## Weekly Look Ahead



Department of  
Design and  
Construction

Office of Community Outreach & Notification

Weekly Construction Bulletin

Safe Routes to School - Phase I Project  
Manhattan

Project #HWCSCH3E-R  
Friday, 4/10/2015

The following is an anticipated work schedule for the upcoming week. However, due to unforeseen field and weather conditions, it may become necessary to change some scheduled work locations, operations and dates. Please note, parking may be restricted.

Date	Location	Operation	Work Hours
4-11-15 to 4-12-15	NW Corner of Junet Pl. & W. 168th St. NW corner of E. Broadway & Rutgers St.	Basin & Chute Installation	9:00 AM - 5:00 PM
4-13-15 to 4-17-15	NW corner of E. Broadway & Rutgers St. SW corner of W. 170th St. & Amsterdam Ave.	Basin & Chute Installation Gas & Electrical Layout	9:00 AM - 5:00 PM
4/15/15	Adam Clayton Powell Blvd btwn W. 141st St. to W. 138th St. W. 141st St. btwn Adam Clayton Powell Blvd. to Frederick Douglas Blvd.	Water Shut down (Night)	11:00 PM - 5:00 AM

**NOTES:**


- ◆ **NO PARKING SIGNS** will be distributed/posted 72-hours prior to the temporary elimination of street parking. Please observe parking regulations in construction areas.
- ◆ **WATER SHUT-OFF NOTIFICATIONS** - In addition to a 72-hour Advisory, a prior 24-hour notification will be distributed/posted affected location(s).

**FOR FURTHER INFORMATION:** Contact **Billy Mowatt**, the Community Construction Liaison at (718) 470-4404 or [billy.mowatt@nyc.gov](mailto:billy.mowatt@nyc.gov) outside of work hours, please call 311 with any concern and mention Project ID# HWCSCH3E-R.

Dr. Patricia Pappalardo  
Community Liaison  
DDC Website: [www.nyc.gov/ddc](http://www.nyc.gov/ddc)

Dr. Patricia Pappalardo  
Community Liaison  
DDC Website: [www.nyc.gov/ddc](http://www.nyc.gov/ddc)

## Advisory Notice



Department of  
Design and  
Construction

DDC Office of Community Outreach & Notification

COMMUNITY ADVISORY NOTICE

Reconstruction of Service Roads on the Grand Concourse

PROJECT # HWXP136A

Borough: The Bronx

April 30th, 2015

**NO CURBSIDE PARKING AND PARTIAL SIDEWALK CLOSURE  
DUE TO SEWER INSTALLATION**

**ON GRAND CONCOURSE NORTHBOUND SERVICE ROAD  
BETWEEN  
E. 170th ST. AND E. 169th**

**5/4 - 22/2015**

Please be advised, starting on or about Monday, May 4th until Friday, May 22nd there will be "No Curbside Parking" permitted on Grand Concourse Northbound Service Road between E. 170th St. and E. 169th St. due to installation of new sewer. Please be observant of posted signage. Please note that due to unforeseen field and/or weather conditions, it may become necessary to change some scheduled work locations and operations, or dates.

**Community/Traffic Impacts:**

- No Curbside Parking will be in effect at all times as of 5/4/15. "No Standing" signs will be posted in advance, throughout the affected area. Please observe the posted construction signage at all times as well as DDC regulations. Vehicles found in violation of these signs will be towed and/or relocated to other locations within the project area, contact the DDC or the 44th Precinct for information on the towing/relocation lot.
- The sewer in this location will be installed underneath a section of the sidewalk and it will be necessary to close this part of the sidewalk to pedestrian traffic. However, a walkway will be maintained for pedestrians at all times during this operation.
- Emergency vehicle access will be maintained at all times in work areas.
- Certain operations may be noisy. DDC will monitor all operations in order to ensure the work is being performed within the DDC noise code regulations.
- Water, gas, electric, telephone, and cable services will not be interrupted.

If you have any questions, concerns or would like to be added to the electronic neighborhood notification network (NHN) list, please contact the Community Construction Liaison Mr. Thomas Alexander at 718-590-1358 or [thomas.alexander@nyc.gov](mailto:thomas.alexander@nyc.gov).

We appreciate your cooperation and thank you in advance for your patience while we rebuild NYC's infrastructure.

Dr. Patricia Pappalardo  
Community Liaison  
DDC Website: [www.nyc.gov/ddc](http://www.nyc.gov/ddc)

Dr. Patricia Pappalardo  
Community Liaison  
DDC Website: [www.nyc.gov/ddc](http://www.nyc.gov/ddc)

Project Name: Safe Routes to Schools

Project ID: HWCSCH4A

06/01/16

Slide 14

# KEEPING YOU INFORMED

## Office of Community Outreach & Notification

- DDC has assigned **Diane Guskin** of **Entech Engineering, Inc.** as the dedicated on-site Community Construction Liaison (CCL) to:
  - Keep stakeholders informed by being the first point of contact for the project
  - Identifying, addressing and/or resolving field inquiries & issues as well as any coordination between the project and needs of the affected stakeholders
  - Provide regular updates/advisories for the community to better plan around construction activities
- CCL contact information:
  - **Office phone:** **212-564-7180**
  - **Email:** **[schoolsafety.med635ccl@gmail.com](mailto:schoolsafety.med635ccl@gmail.com)**
  - **Field Office:** **152 West 36<sup>th</sup> St, Ste 201, NY, NY 10018**
- Learn more about DDC: **[www.youtube.com/newyorkcityddc](http://www.youtube.com/newyorkcityddc)**
- DDC Website: **[www.nyc.gov/buildnyc](http://www.nyc.gov/buildnyc)**
- During Non-Working hours, please call 311 and give the Project ID: **HWCSCH4A**