

Second Avenue Subway

Community Board 8 Second Avenue Subway Task Force Update

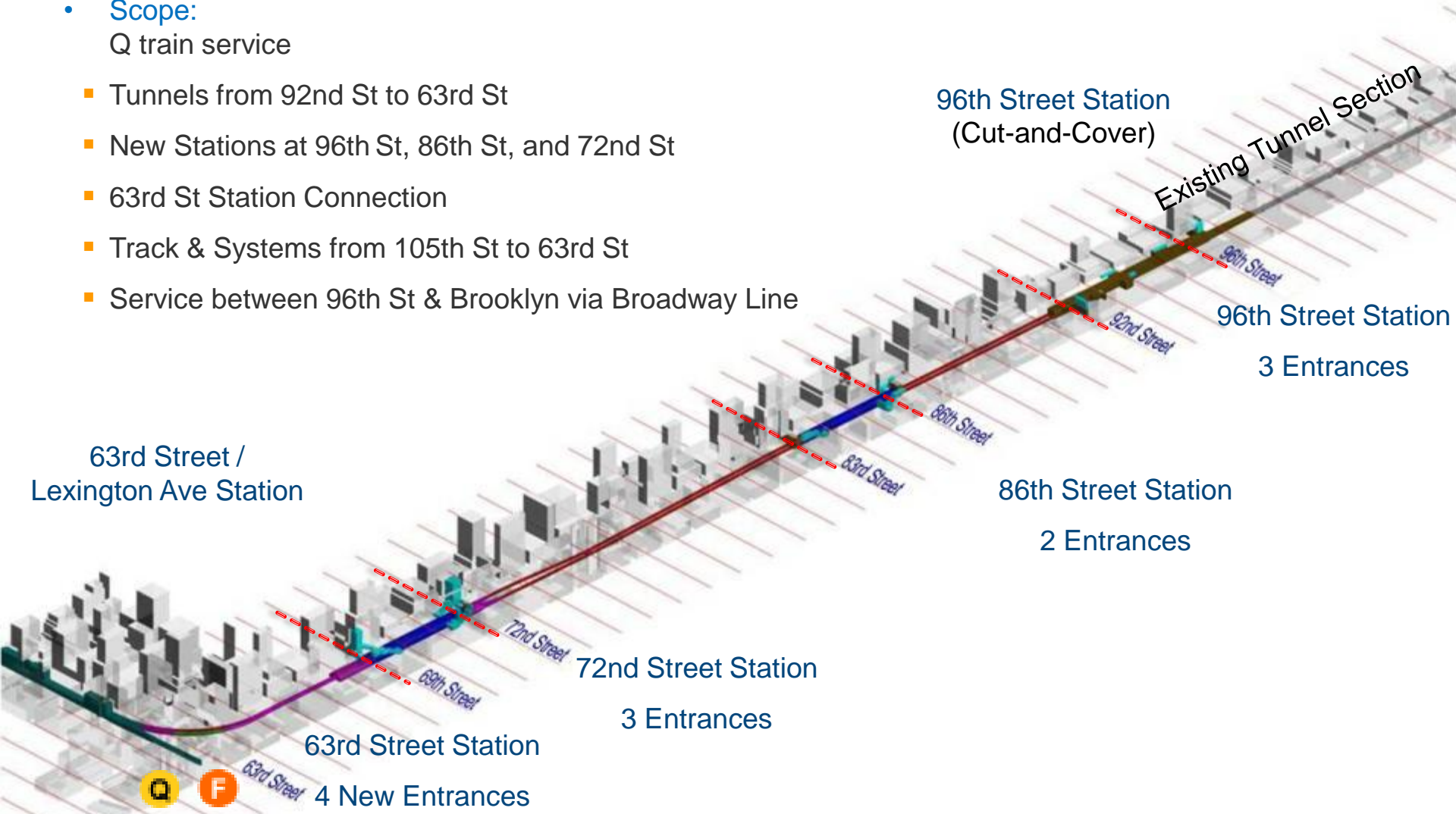
April 23, 2015

Tom Peyton
Second Avenue Subway
Project Director



Phase 1 Overview

- Scope:
 - Q train service
 - Tunnels from 92nd St to 63rd St
 - New Stations at 96th St, 86th St, and 72nd St
 - 63rd St Station Connection
 - Track & Systems from 105th St to 63rd St
 - Service between 96th St & Brooklyn via Broadway Line



Phase 1: Target Cost-\$4.451B--- Ridership 200,000 --- Target Completion Date-2016

Current Project Status

- Overall Construction Progress is 81.1% Complete (as of April 1, 2015)
- All 10 SAS Contracts have been awarded for Phase 1
- 5 Construction Contracts Completed:
 - Tunnel Boring Machine Tunneling
 - 86th St Excavation, Utility Relocation, and Road Decking
 - 96th St Site Work and Heavy Civil
 - 72nd St Cavern Mining, Tunnels and Heavy Civil (1/14/14)
 - 86th St Cavern Mining & Heavy Civil (12/16/14)



5 Active Contracts

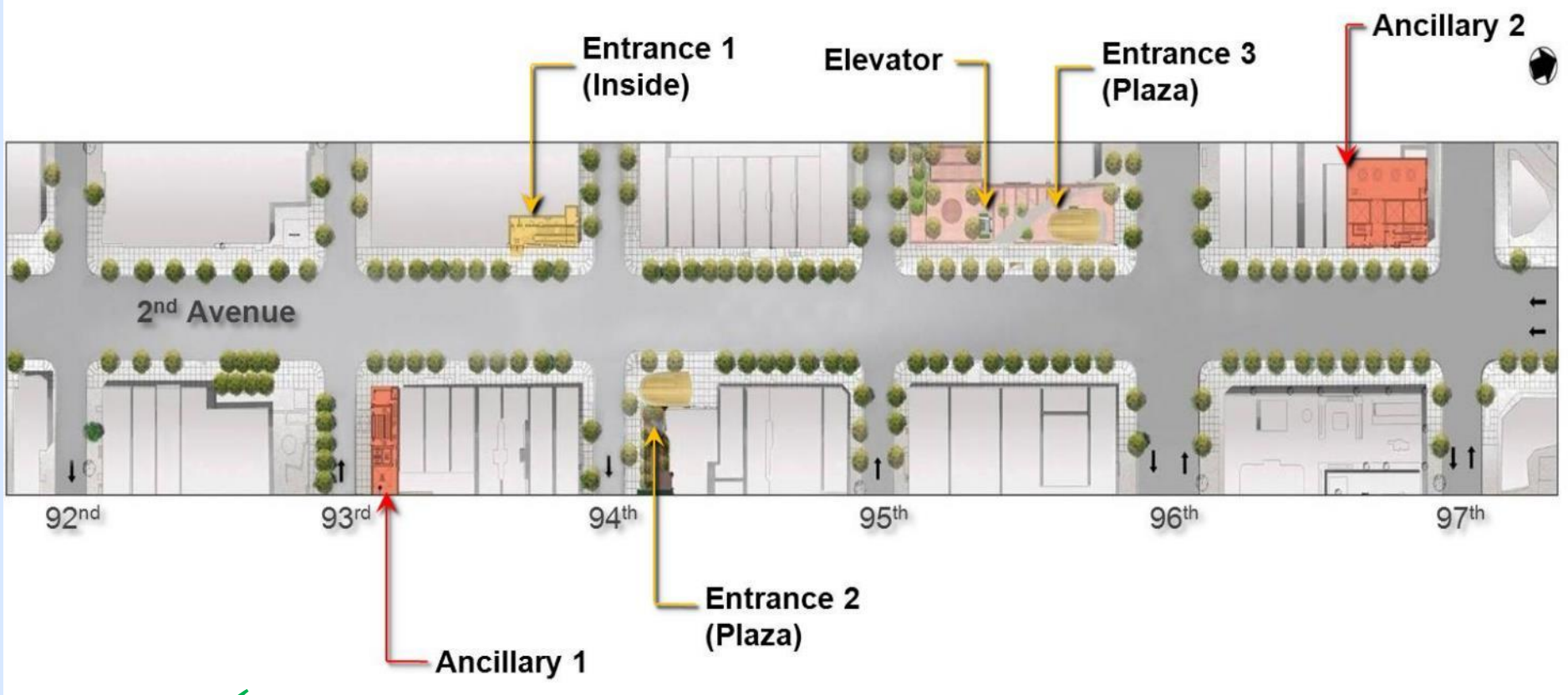
96th St.	Station Finishes, Systems, Ancillary Buildings and Entrances	67%
86th St.	Station Finishes, Systems, Ancillary Buildings and Entrances	35.2%
72nd St.	Station Finishes, Systems, Ancillary Buildings and Entrances	55.8%
63rd St.	Station Upgrade	88.1%
All Stations	Track, Power, Signals & Communications Systems	50.7%



Stations



96th Street Station



Heavy Civil, Structural and Utility Relocation Contract

Percent Complete: **100%**

Contract Value: **\$325,000,000**

Award Date: **May 28, 2009**

Substantial Completion: **November 5, 2013**

Finishes, MEP Systems, Ancillary Buildings and Entrances Contract

Percent Complete: **65%**

Contract Value: **\$324,600,000**

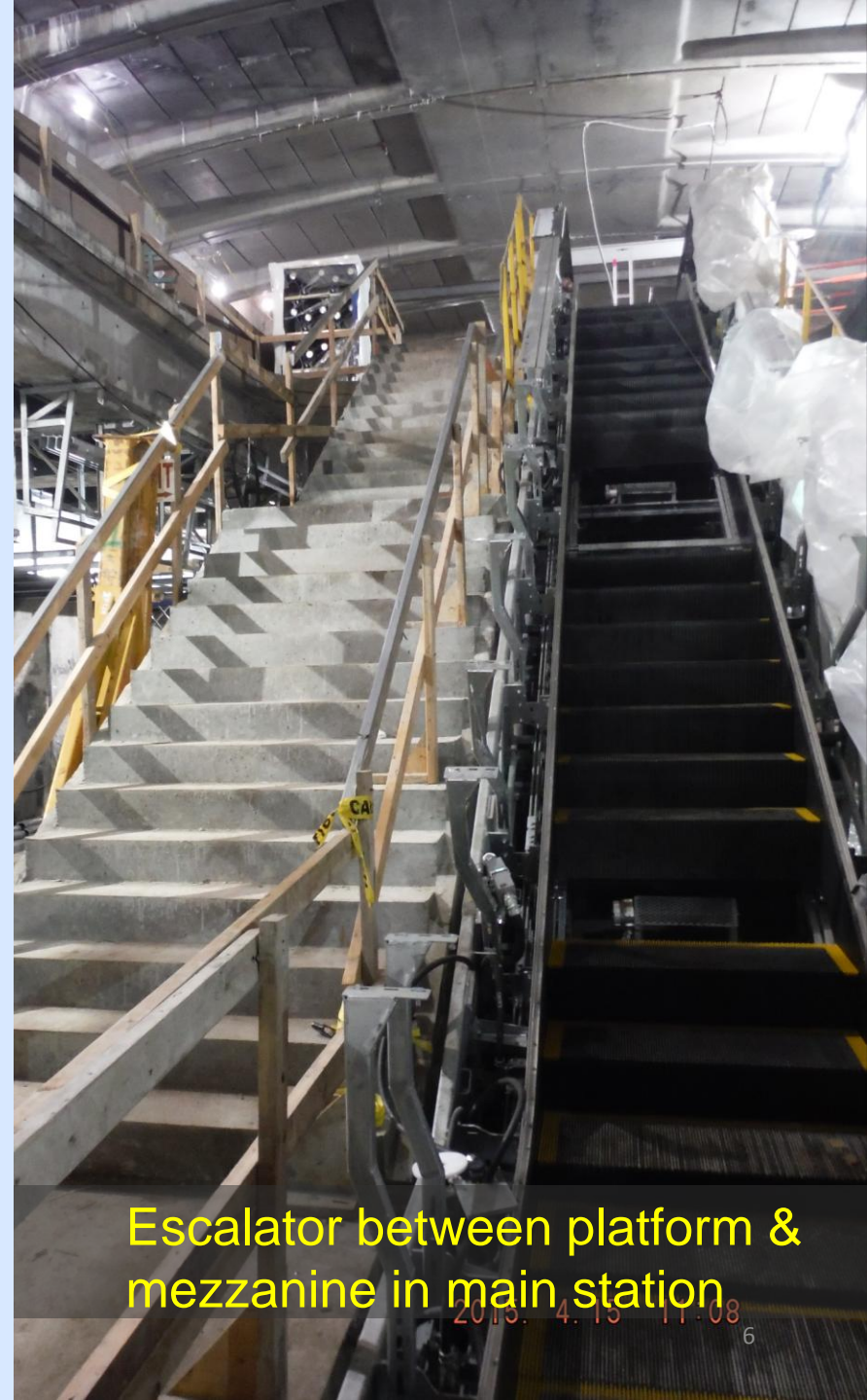
Award Date: **June 22, 2012**

Forecast Completion: **October 2016**

96th Street Station Progress

Contract C2B is 65% complete as of April 1st, 2015.

- Completed traffic switch between 91st and 93rd Streets.
- Continued surface utility work on the east side of Second Avenue between 93rd and 96th Streets.
- Installed three of nine escalators.
- Three of four floors (structural concrete) poured above ground at Ancillary 1.
- Two of three floors (structural concrete) poured above ground at Ancillary 2.
- Full access to communication, signal, and traction power rooms. Fifteen of 21 rooms (71%) complete & turned over to Contract 6.



Escalator between platform & mezzanine in main station

2015. 4.15 11:08 6





Traffic switch to east side of Second Avenue
91st – 92nd Streets (looking south)



Formwork for Ancillary 2 walls
Southwest corner 97th Street



Formwork for Ancillary 1 walls
Northeast corner 93rd Street



Rebar & Formwork for Entrance 2
Second Avenue and 94th Street (looking south)

2015. 4. 15 10:25

Three-Month Look Ahead

- Deck beam & roadway decking removal on the west side of Second Avenue.
- Complete surface utility work on the east side of Second Avenue between 93rd and 96th Streets.
- Complete concrete pours at ancillary buildings.
- Installation of HVAC ducts, masonry walls, and electrical conduit throughout the station.



Three-Month Look Ahead

- Concrete pours and installation of escalator trusses at entrances.
- Water main work in conjunction with DEP.
- MPT switch to west side of Second Avenue (select locations).





96th Street Entrance 3 rendering
SW corner 96th Street and Second Avenue

86th Street Station



Cavern Mining and Lining Contract

Percent Complete: **100%**

Contract Value: **\$332,860,000**

Award Date: **August 4, 2011**

Substantial Completion: **December 16, 2014**

Finishes, Entrances, Ancillaries, and MEP Systems Contract

Percent Complete : **31.58%**

Contract Value: **\$223,000,000**

Award Date: **June 12, 2013**

Forecast Completion: **October 2016**

86th Street Station Milestones

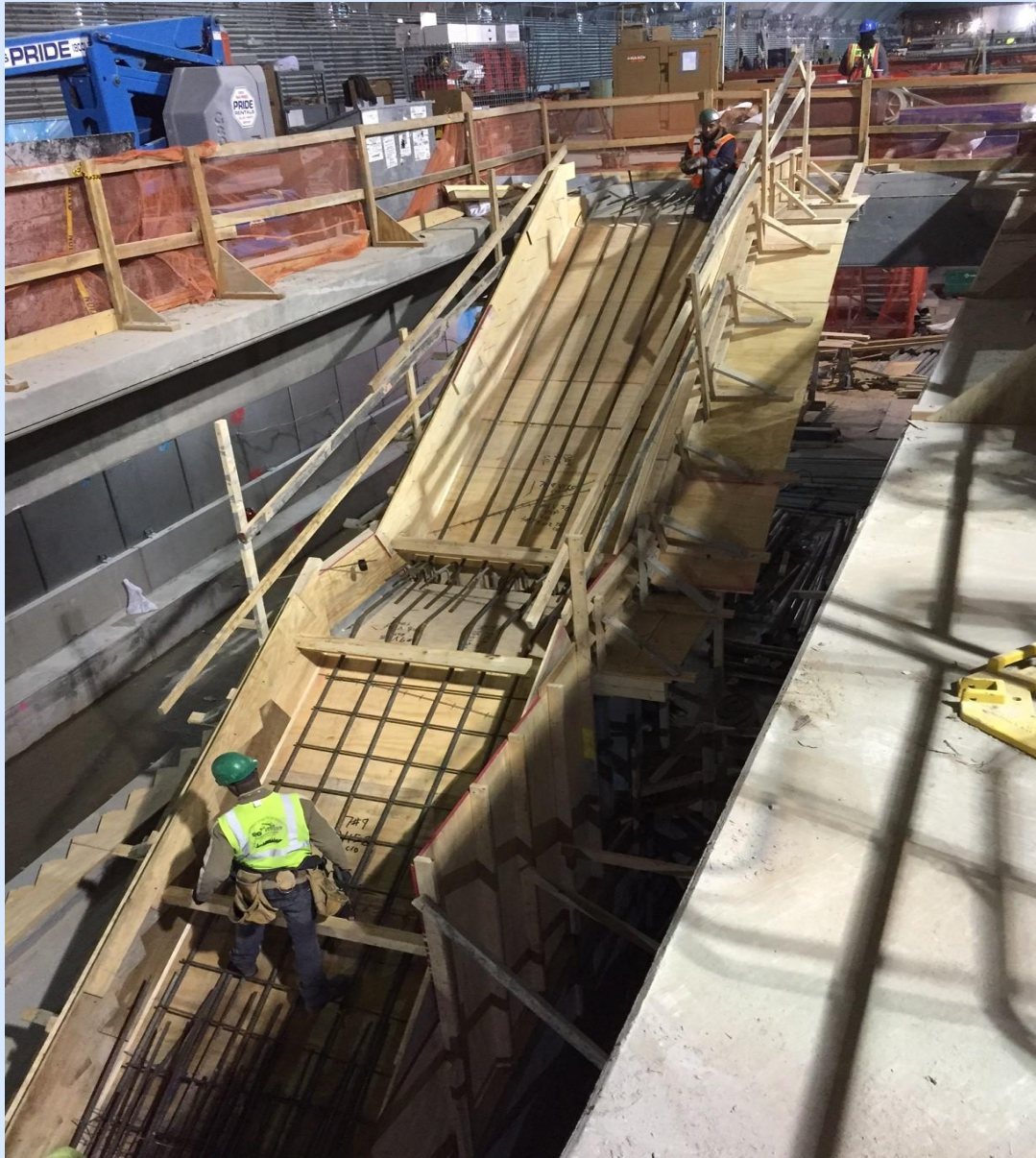
- Mezzanine concrete pours in the station are 100 percent complete
- Concrete pours for the platform are 60 percent complete



86th Street Station

86th Street between Second and First Avenues looking east.





**Stairway from mezzanine level to platform level
at Entrance 1 (83rd Street)**



**Escalator installation at entrance 2 (86th Street
between Second and First Avenues)**



Three Month Look Ahead

86th Street Station Area

E. 78th to E. 79th Streets (center of Second Avenue)

- Reduced traffic on Second Avenue between 78th and 79th Streets to two lanes east of the center work zone and two lanes west of the center work zone to deliver concrete to the tunnels below.

E. 83rd to E. 85th Streets – South Cavern

- Work zones between 83rd and 85th will move to the west side of Second Avenue for utility relocation and street restoration.
- Construction of the Ancillary 1 building on the northwest corner of 83rd Street will come to street level in June.

E. 86th to E. 87th Streets - North Cavern

- Foundation construction of the Ancillary 2 building on the northwest corner of 86th Street.



Three Month Look Ahead

86th Street Station Area

Underground Construction

- Installation of concrete masonry walls at the platform and mezzanine levels.
- Installation of HVAC ductwork and equipment at the platform and mezzanine levels.
- Installation of electrical conduit at the platform and mezzanine levels and in Entrance 1.
- Delivery of permanent equipment and systems throughout station has begun, including equipment to power station, escalators, and elevators.



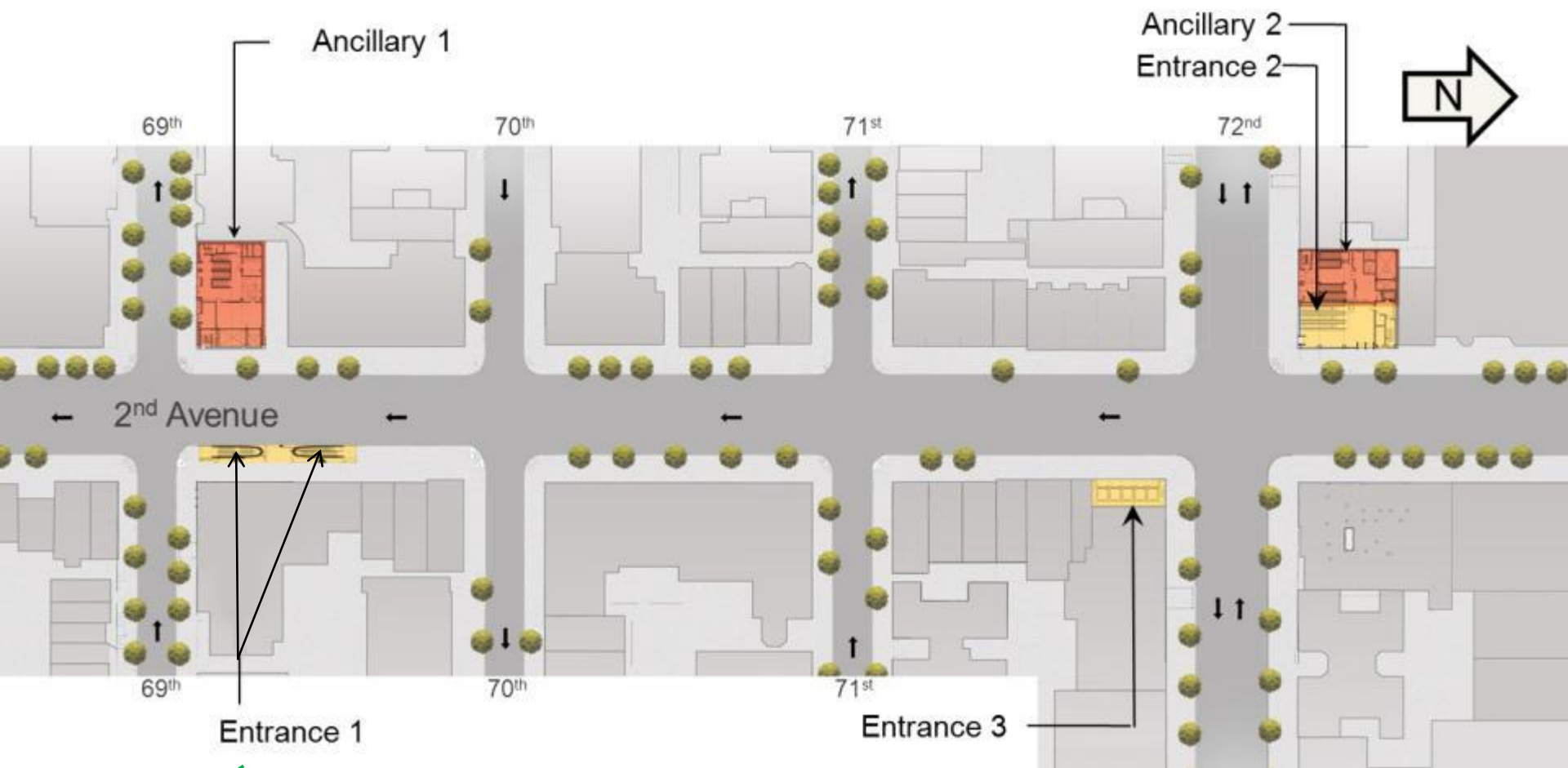


86th Street Entrance 1 Rendering

83rd Street and Second Avenue

86TH ST STATION – ENTRANCE 1 @ 83RD ST & 2ND

72nd Street Station



Cavern Mining, Tunnels, and Heavy Civil Contract

Percent Complete : **99%**

Contract Value incl. AWOs: **\$469.5 M**

Award Date: **October 1, 2010**

Substantial Completion: **January 14, 2014**

Finishes, MEP Systems, Ancillary Buildings and Entrances Contract

Percent Complete : **48.51%**

Contract Value incl. AWOs: **\$282.4 M**

Award Date: **February 14, 2013**

Forecast Completion: **October 2016**

Milestones

- Entrance 1 excavation 84% complete as of mid-April
- Platform concrete pours 100% complete as of January 2015
- Rail installation commenced in October 2014
- Equipment rooms have been completed and turned over to the systems contractor for delivery and installation of communications and signaling equipment



Current Progress



Main Cavern – Mezzanine level wall support framing installation



Current Progress



Main Cavern (platform level) – Installation of track wall supports



Current Progress

Ancillary#2 NW corner 72nd Street



Current Progress



Current Progress

Entrance 1
excavation
underway
301 East 69th
Street garage



Three-Month Look Ahead

Main Station Cavern:

- Installation of precast track wall panels, conduits and duct work at the platform level
- Mechanical, electrical and plumbing systems installation at mezzanine level
- Construction of new operations and maintenance rooms within mezzanine area

Entrance 1:

- Excavation work for Entrance 1 (northeast corner of 69th Street and Second Avenue) within garage at 301 E. 69th Street
- Rock excavation for street entrance on Second Avenue between 69th and 70th Streets will be complete in May
- Underground portion of the entrance incline is in progress
- Street work hours: 7 a.m. – 10 p.m.



Three-Month Look Ahead

Ancillary 1, Ancillary 2, Entrance 3

- Installation of waterproofing and construction of Ancillary 1, Ancillary 2 and Entrance 3 structures
- Concrete pumping at Ancillary 1, Ancillary 2 and Entrance 3
- Installation of new rough terrain crane at Ancillary 1 to replace existing crane; date to be determined

Miscellaneous

- Concrete truck staging as needed between 74th and 76th Streets
- Use of access hatch at southeast corner of 72nd Street and Second Avenue to deliver equipment on swing shift (3 p.m. to 10 p.m.) and Saturdays.



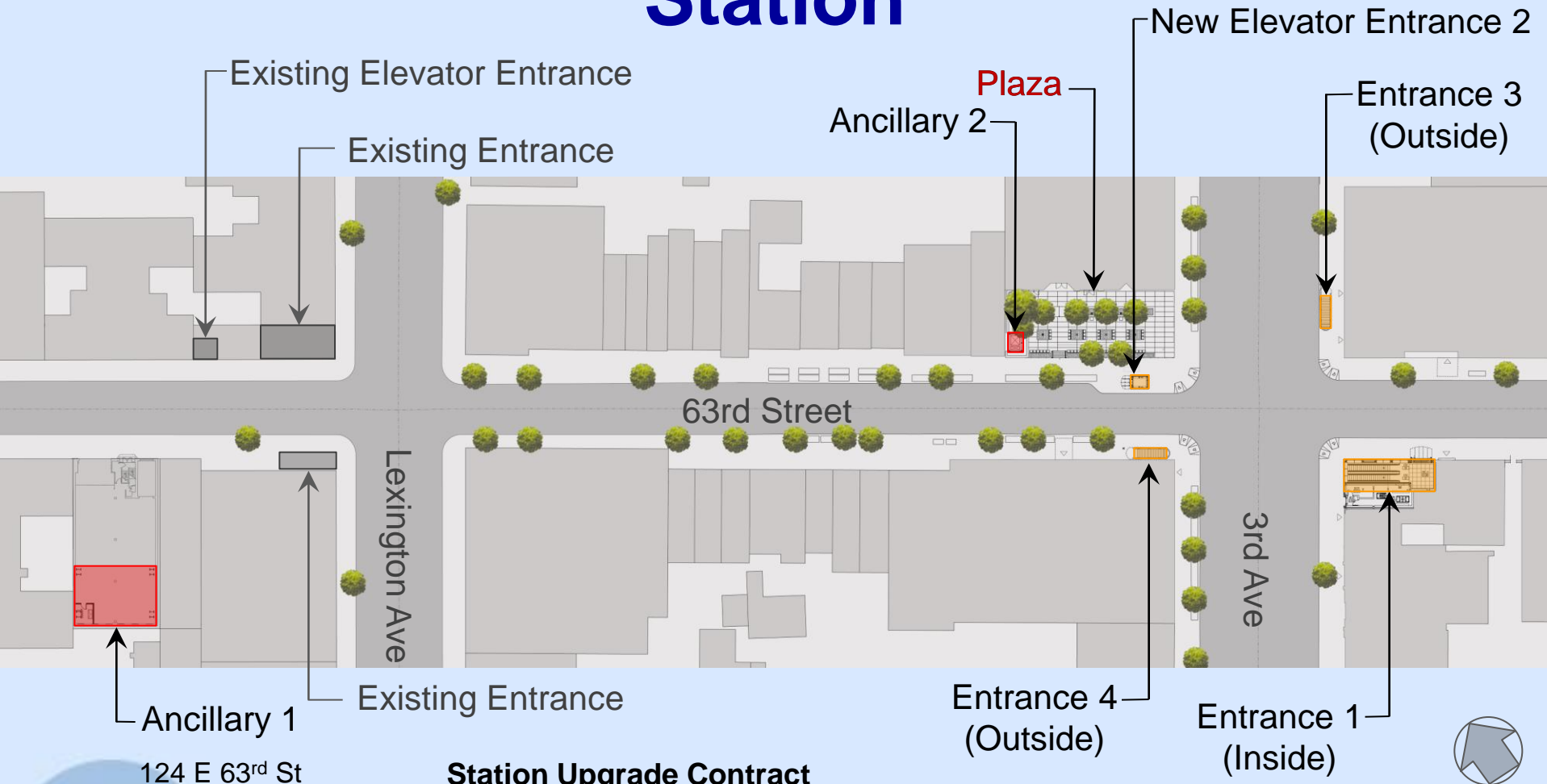
72nd Street
Entrance 2 /
Ancillary 2
Rendering

NW corner
72nd Street and
Second Avenue



72ND ST STATION – ENTRANCE 2 / ANCILLARY 2

Rehabilitation of Existing 63rd Street Station



124 E 63rd St
Top of
Hahn Garage

Station Upgrade Contract

Percent Complete: 87.10 %

Contract Value incl. AWOs: \$190.8 M

Award Date: January 13, 2011

Forecast Completion: December 2015

Milestones

- Excavation and installation of permanent structural supports for Entrance 1 (200 East 63rd Street) – was completed January 2015.
- Construction for Entrance 3 (NE corner of 63rd Street and Third Avenue) – Completed 100% of concrete pours for columns.



Current Progress (NE corner of 63rd Street & Park Avenue)



Grating installation and sidewalk restoration looking east

MTA Capital Construction

Current Progress



New track wall tiles at lower level platform
(On 63rd St and Lexington Av)

Current Progress



New column cladding, ceilings, platform lighting, and track wall tiles at the lower level platform level
(On 63rd St and Lexington Av)

MTA Capital Construction

Three-Month Look Ahead

STATION

- Installation of service carrier, ductwork and electrical conduit at the upper platform level
- Installation of platform finishes, including ceilings, track wall tile framing, column covers, platform paving, and lighting fixtures
- Masonry wall, ceiling panel, and door installation throughout station
- Mechanical, electrical and plumbing systems installation in new station area



Three-Month Look Ahead

ENTRANCE 1

(200 East 63rd Street)

- Concrete and steel installation for new entrance way

ANCILLARY 2

(Northwest corner of 63rd Street and Third Avenue)

- Construction of elevator shaft within plaza work zone area
- Reconfigure MPT along 63rd Street so that contractor can receive materials via sidewalk access hatch located just west of plaza



Three-Month Look Ahead

OTHER SURFACE WORK

- Reopen 63rd Street sidewalk grates along 139 East 63rd Street and 140 East 63rd Street
- Entrance 4 (southwest corner of 63rd and Third Avenue) installation of interior finishes.

THIRD AVENUE STORAGE/WORK ZONE

(Third Avenue between 63rd and 64th Streets)

- Work zone will remain until Summer 2016 for materials storage and small office trailer for systems contractor.

PLAZA RESTORATION

- Verbal agreement with Food Emporium on access agreement.
- We hope to have a signed contract and begin work in the next few weeks.





Proposed Rendering of 63rd Street Plaza (design not finalized)

SW corner of 63rd Street and Third Avenue

Systems Installation

- Low Vibration Track (LVT) System Being Installed
 - Track to be installed: 22,000 ft.
 - Track installed to date: 7,587 ft.
 - Aluminum 3rd rail installed: 3,400 ft.
 - Track delivered to site: 15,800 ft.

Note: Track as reported here consists of 2 rails and includes Special Work Portions

- Traction Power work ongoing for three substations and four circuit breaker houses



LVT Track installed with Aluminum 3rd rail



Systems Installation

Relay (signal) room installation progress at 72nd Street.

- Signal equipment being installed in relay rooms, central instrumentation room and along the wayside
- Communications systems work is ongoing

Track, Power, Signals and Communications Systems Contract

Percent Complete: **50.6%**

Contract Value incl. AWOs: **\$282.8 M**

Award Date: **January 18, 2012**

Forecast Completion: **October 2016**



Questions

