

ROOSEVELT ISLAND OPERATING CORPORATION
OF THE STATE OF NEW YORK

**DESIGN OF TWO NEW ELEVATORS
FOR MANHATTAN TRAM STATION**

254 EAST 60th STREET, NEW YORK, NY 10022



GC ENG & ASSOCIATES

141 W 28TH ST, NEW YORK, NY 10001
TEL: 212.695.531 FAX: 212.695.5170



VIEW OF EXISTING TRAM STATION

PROJECT PROPOSAL

MODERNIZATION OF THE MANHATTAN
AERIAL TRAMWAY AT 60TH STREET AND
2ND AVENUE, TRAMWAY PLAZA

GOALS

- TWO NEW GLASS ELEVATORS
- INCREASED USER CAPACITY
- ADA COMPLIANT ELEVATORS
- ENHANCED DESTINATION VISIBILITY
- GREATER RELIABILITY & MAINTAINABILITY
- INCREASED LIGHTING AND SECURITY
- IMPROVED CIRCULATION



Roosevelt Island Operating Corporation

591 MAIN ST. NEW YORK, NY 10044
TEL: 212.832.4540



NYC DEPARTMENT OF
PARKS & RECREATION
24 W 61ST ST, NEW YORK, NY 10023
TEL: 212.830.7700



GC ENG & ASSOCIATES
141 W 28TH ST, NEW YORK, NY 10001
TEL: 212.695.531 FAX: 212.695.5170



VIEW OF EXISTING STATION FROM 2ND AVE.



VIEW OF TRAMWAY PLAZA FROM 60TH & 2ND



VIEW OF EXISTING ELEVATORS



**Roosevelt Island
Operating Corporation**

591 MAIN ST. NEW YORK, NY 10044
TEL: 212.832.4540



**NYC DEPARTMENT OF
PARKS & RECREATION**

24 W 61ST ST, NEW YORK, NY 10023
TEL: 212.830.7700



GC ENG & ASSOCIATES

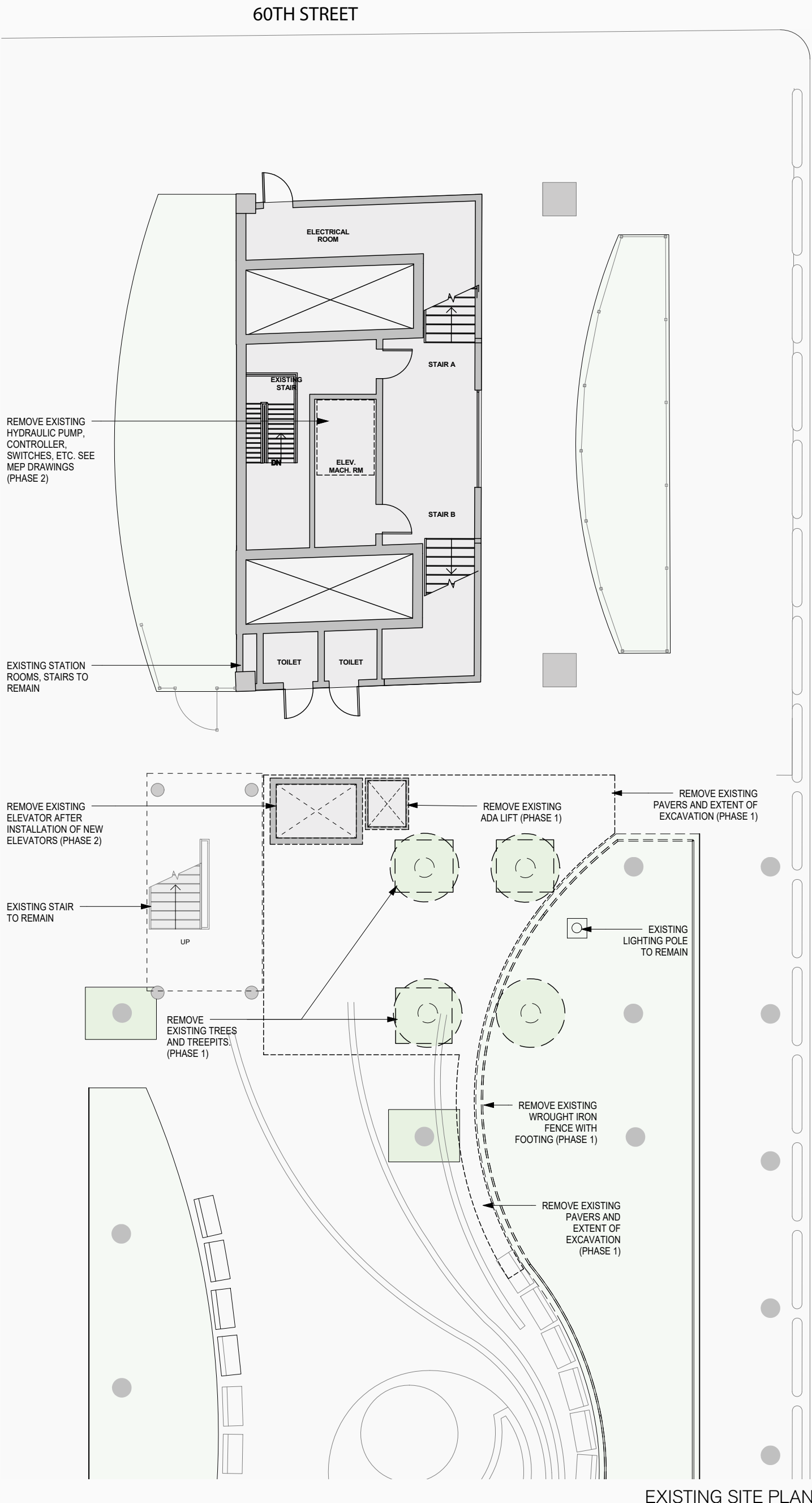
141 W 28TH ST, NEW YORK, NY 10001
TEL: 212.695.531 FAX: 212.695.5170



VIEW OF EXISTING ELEVATORS AT PLATFORM LEVEL.



VIEW OF EXISTING ELEVATORS AT GROUND LEVEL



Roosevelt Island Operating Corporation

591 MAIN ST. NEW YORK, NY 10044
TEL: 212.832.4540



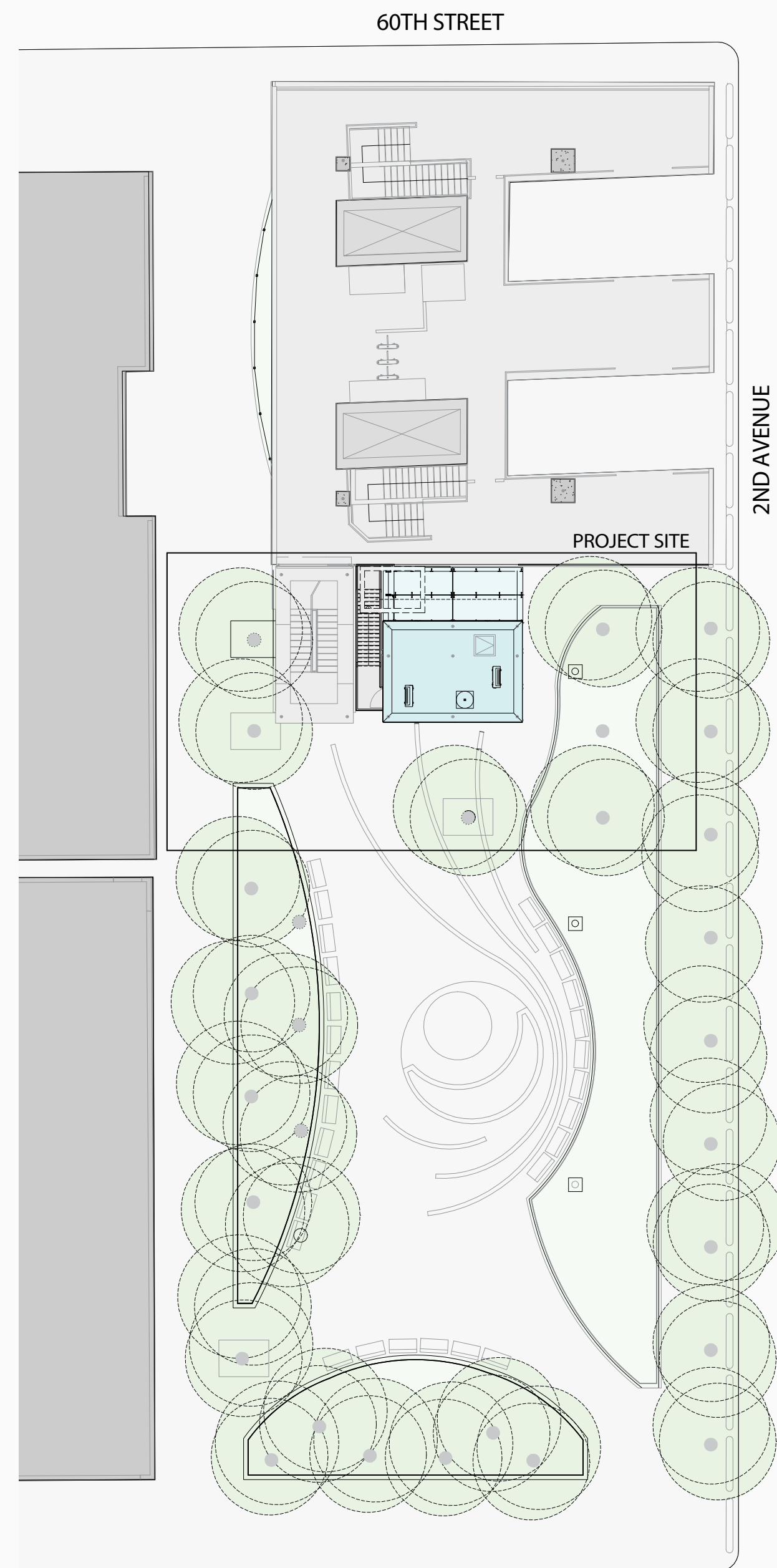
NYC DEPARTMENT OF
PARKS & RECREATION
24 W 61ST ST, NEW YORK, NY 10023
TEL: 212.830.7700



GC ENG & ASSOCIATES
141 W 28TH ST, NEW YORK, NY 10001
TEL: 212.695.531 FAX: 212.695.5170



PROPOSED NEW ELEVATOR FROM 2ND AVE



PROPOSED NEW SITE PLAN



Roosevelt Island Operating Corporation

591 MAIN ST. NEW YORK, NY 10044
TEL: 212.832.4540



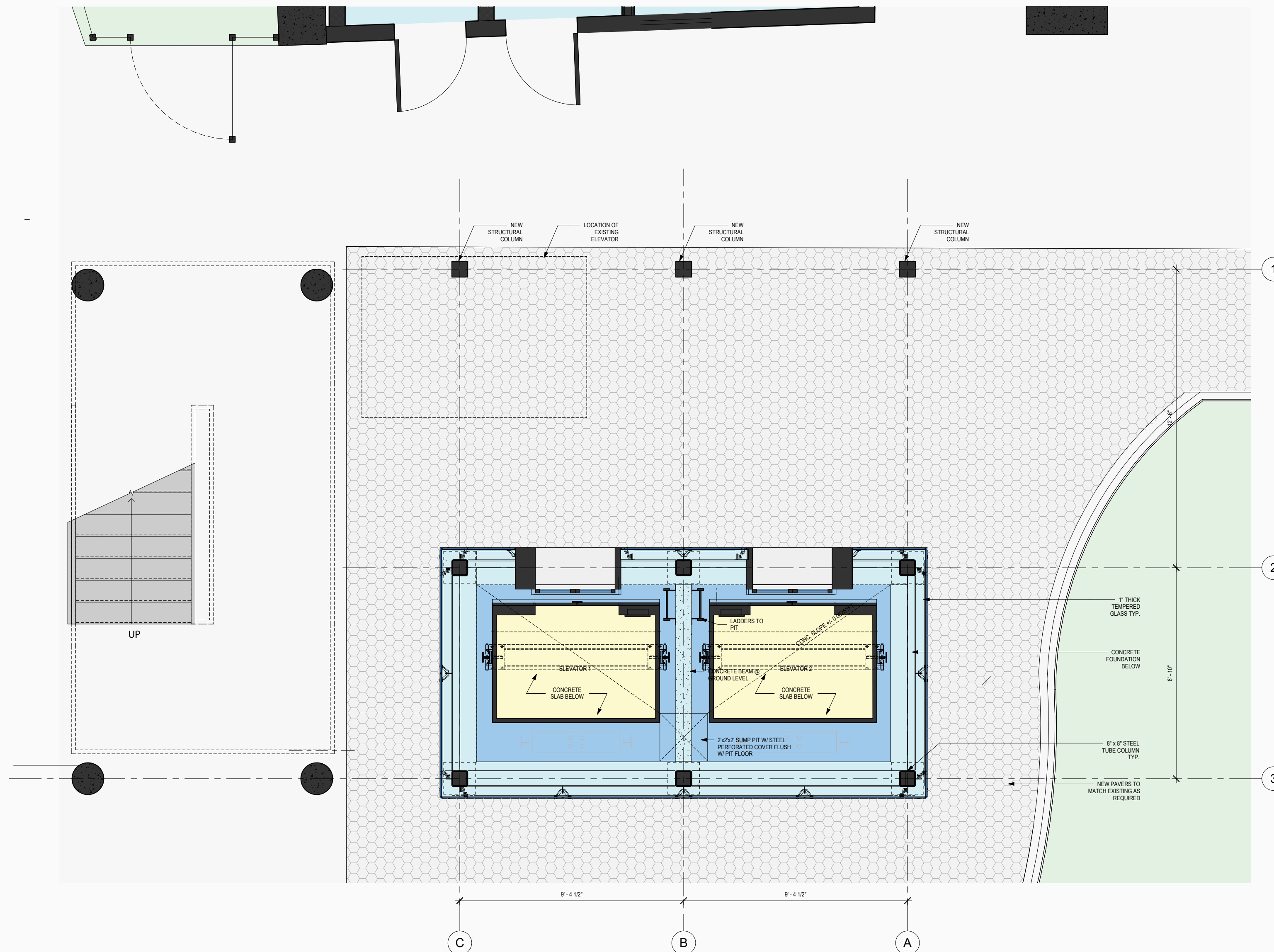
NYC DEPARTMENT OF PARKS & RECREATION

24 W 61ST ST, NEW YORK, NY 10023
TEL: 212.830.7700



GC ENG & ASSOCIATES

141 W 28TH ST, NEW YORK, NY 10001
TEL: 212.695.531 FAX: 212.695.5170



GROUND LEVEL FLOOR PLAN





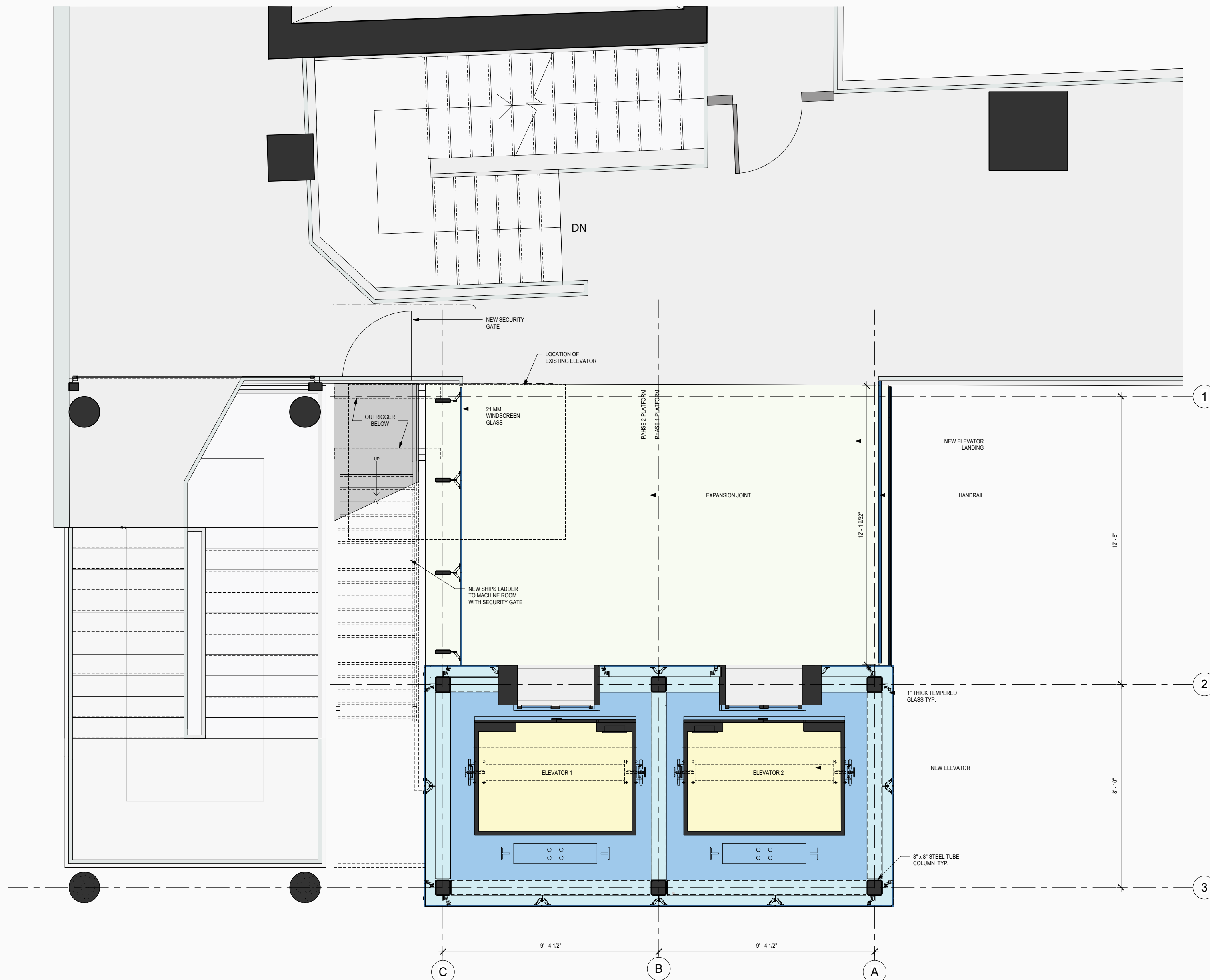
Roosevelt Island Operating Corporation

591 MAIN ST. NEW YORK, NY 10044
TEL: 212.832.4540



NYC DEPARTMENT OF PARKS & RECREATION

24 W 61ST ST, NEW YORK, NY 10023
TEL: 212.830.7700



PLATFORM LEVEL FLOOR PLAN



GC ENG & ASSOCIATES

141 W 28TH ST, NEW YORK, NY 10001
TEL: 212.695.531 FAX: 212.695.5170



VIEW OF PROPOSED NEW BRIDGE & WIND SCREEN AT PLATFORM LEVEL



Roosevelt Island Operating Corporation

591 MAIN ST. NEW YORK, NY 10044
TEL: 212.832.4540



NYC DEPARTMENT OF PARKS & RECREATION

24 W 61ST ST, NEW YORK, NY 10023
TEL: 212.830.7700



GC ENG & ASSOCIATES

141 W 28TH ST, NEW YORK, NY 10001
TEL: 212.695.531 FAX: 212.695.5170

Roosevelt Island Operating Corporation

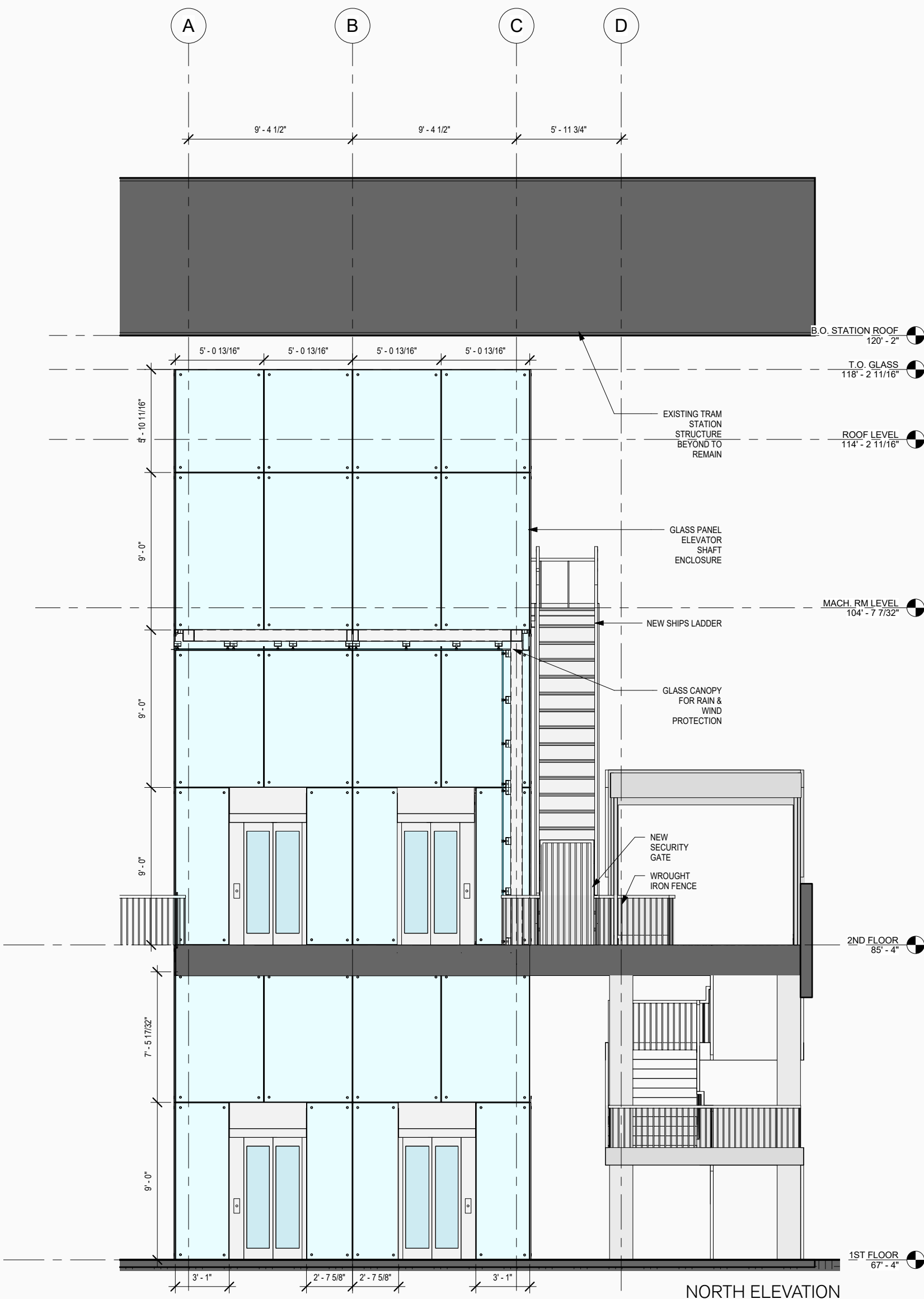
591 MAIN ST. NEW YORK, NY 10044
TEL: 212.832.4540



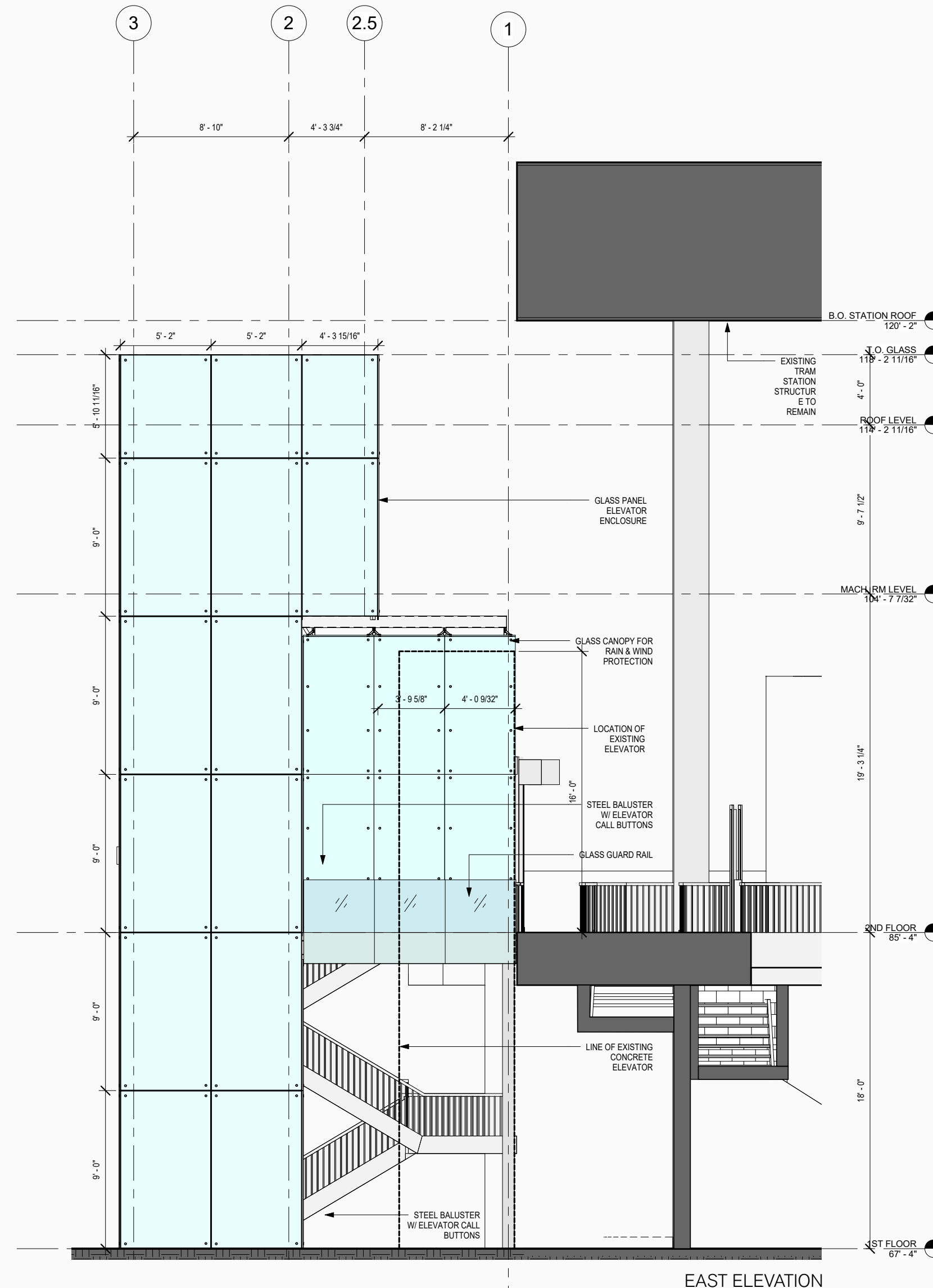
NYC DEPARTMENT OF
PARKS & RECREATION
24 W 61ST ST, NEW YORK, NY 10023
TEL: 212.830.7700



GC ENG & ASSOCIATES
141 W 28TH ST, NEW YORK, NY 10001
TEL: 212.695.531 FAX: 212.695.5170



NORTH ELEVATION



EAST ELEVATION

Roosevelt Island Operating Corporation

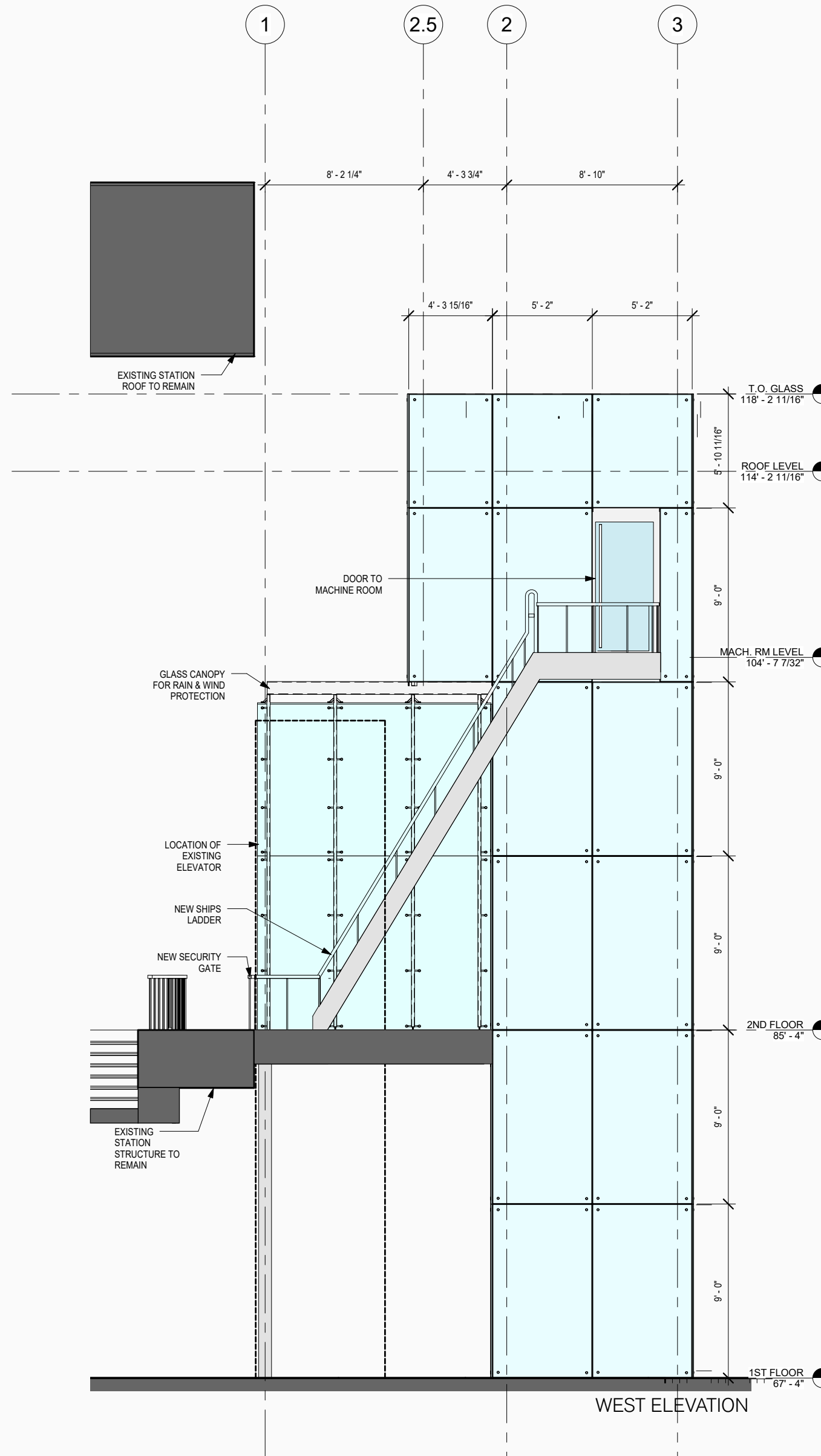
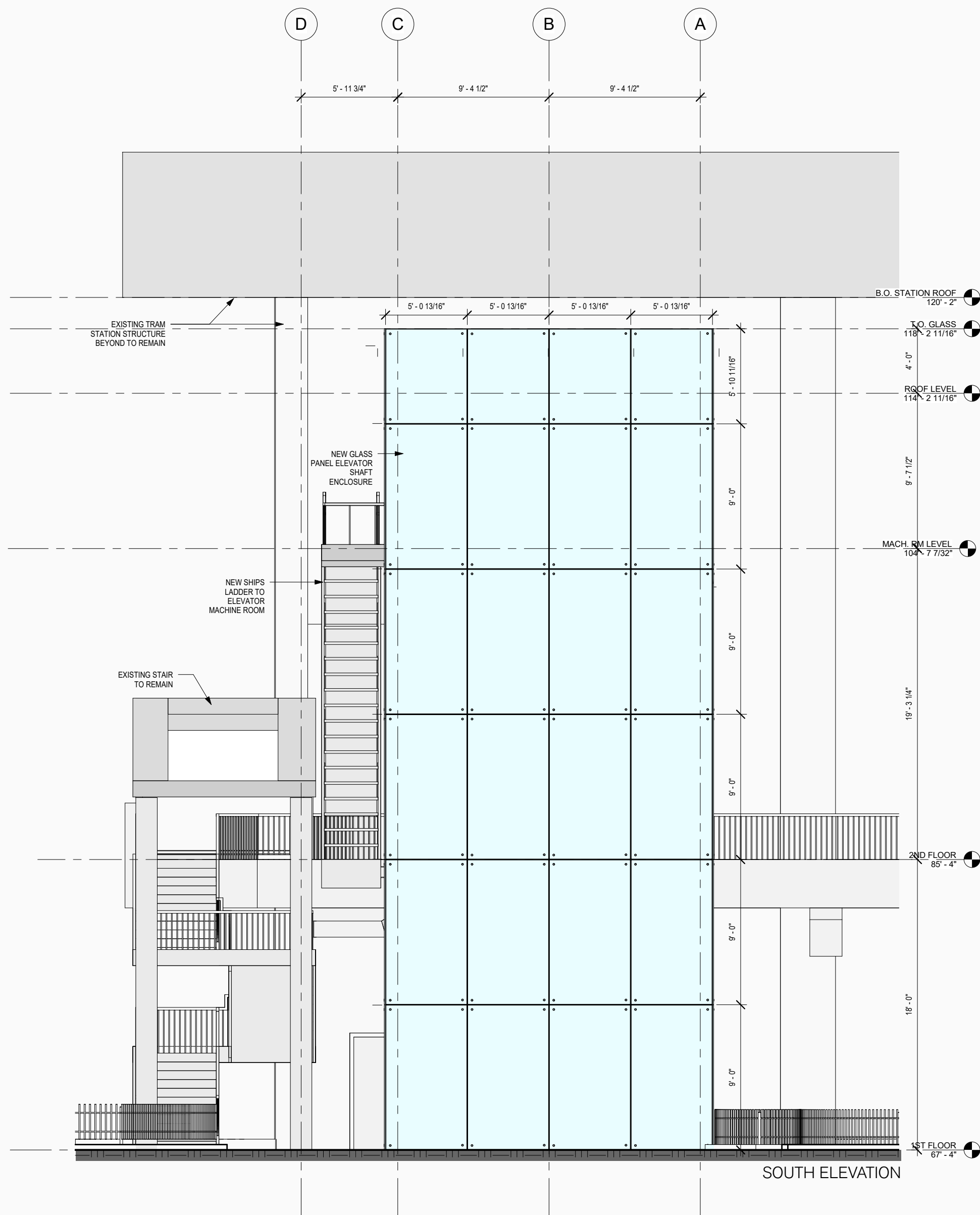
591 MAIN ST. NEW YORK, NY 10044
TEL: 212.832.4540



NYC DEPARTMENT OF
PARKS & RECREATION
24 W 61ST ST, NEW YORK, NY 10023
TEL: 212.830.7700



GC ENG & ASSOCIATES
141 W 28TH ST, NEW YORK, NY 10001
TEL: 212.695.531 FAX: 212.695.5170





VIEW OF PROPOSED NEW ELEVATOR



Roosevelt Island Operating Corporation

591 MAIN ST. NEW YORK, NY 10044
TEL: 212.832.4540



NYC DEPARTMENT OF PARKS & RECREATION

24 W 61ST ST, NEW YORK, NY 10023
TEL: 212.830.7700



GC ENG & ASSOCIATES

141 W 28TH ST, NEW YORK, NY 10001
TEL: 212.695.531 FAX: 212.695.5170

Roosevelt Island Operating Corporation

591 MAIN ST. NEW YORK, NY 10044
TEL: 212.832.4540



NYC DEPARTMENT OF
PARKS & RECREATION
24 W 61ST ST, NEW YORK, NY 10023
TEL: 212.830.7700



GC ENG & ASSOCIATES
141 W 28TH ST, NEW YORK, NY 10001
TEL: 212.695.531 FAX: 212.695.5170

