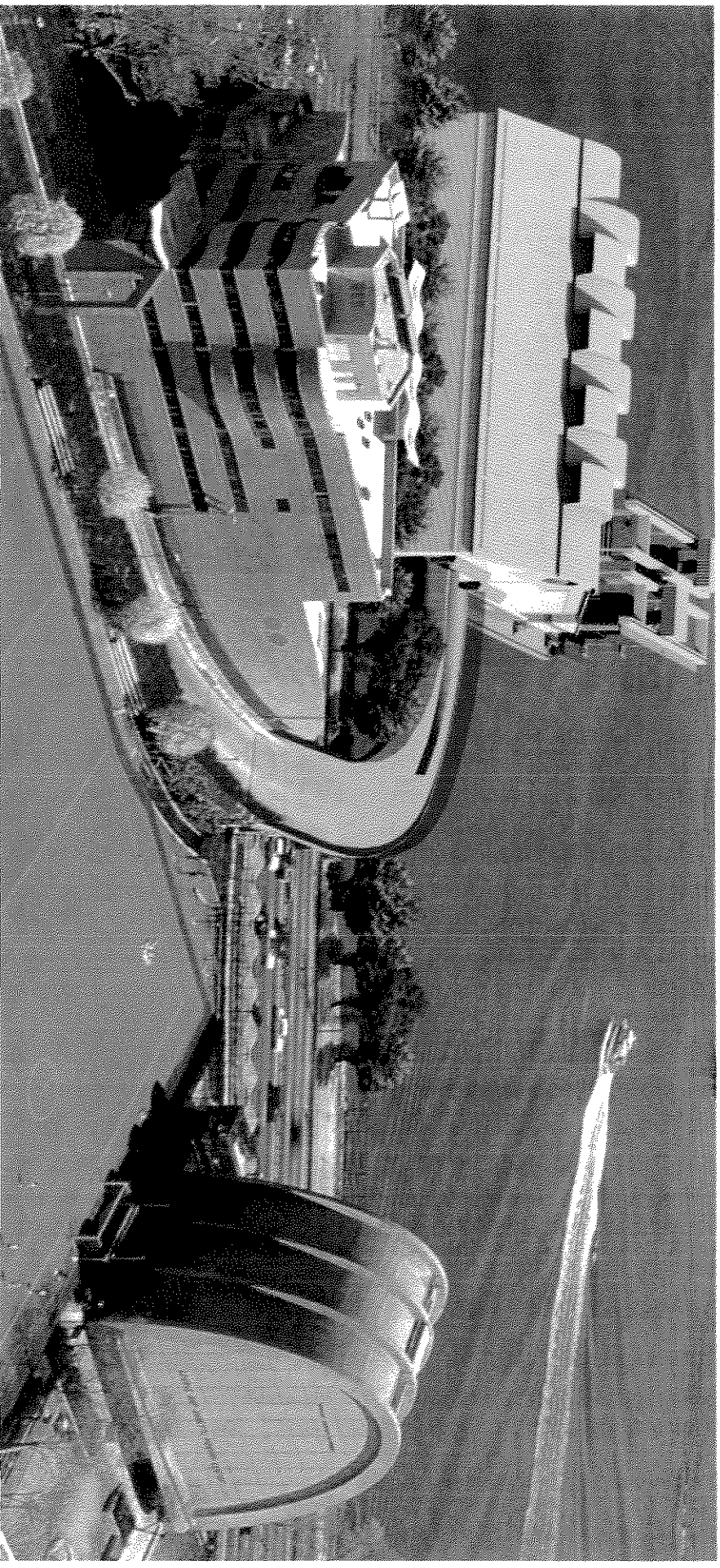


The City of New York Department of Sanitation (DSNY)



**Proposed East 91st Street Converted Marine Transfer Station
Manhattan Community Board 8 Environment & Sanitation
Committee Meeting - February 27, 2012**

Project Update

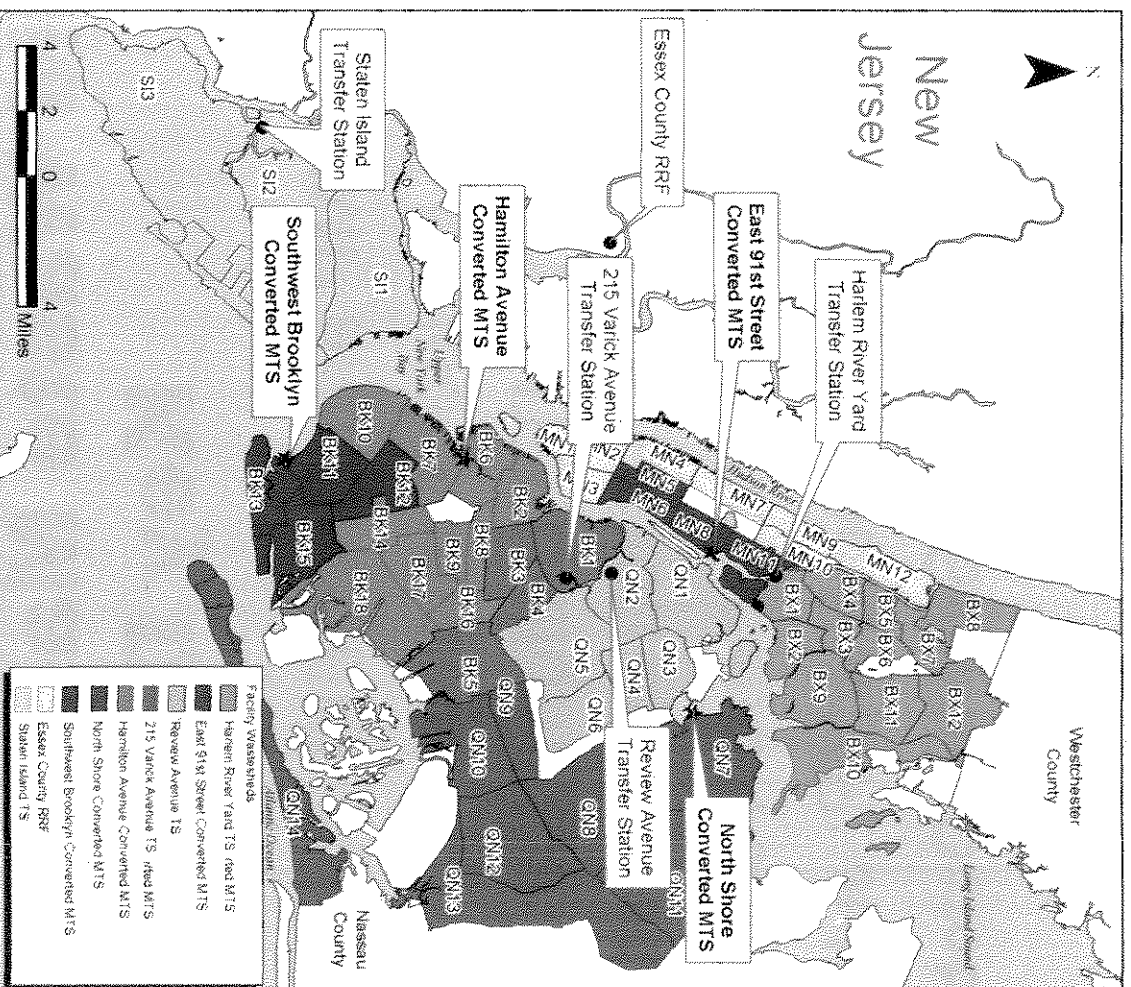
- **Provide project overview and status on:**
 - the construction and operation of the proposed East 91st Street Converted Marine Transfer Station (MTS);
 - the contract award for transport and disposal of MTS waste; and
 - litigation and permitting.
- **Answer questions.**

Solid Waste Management Plan

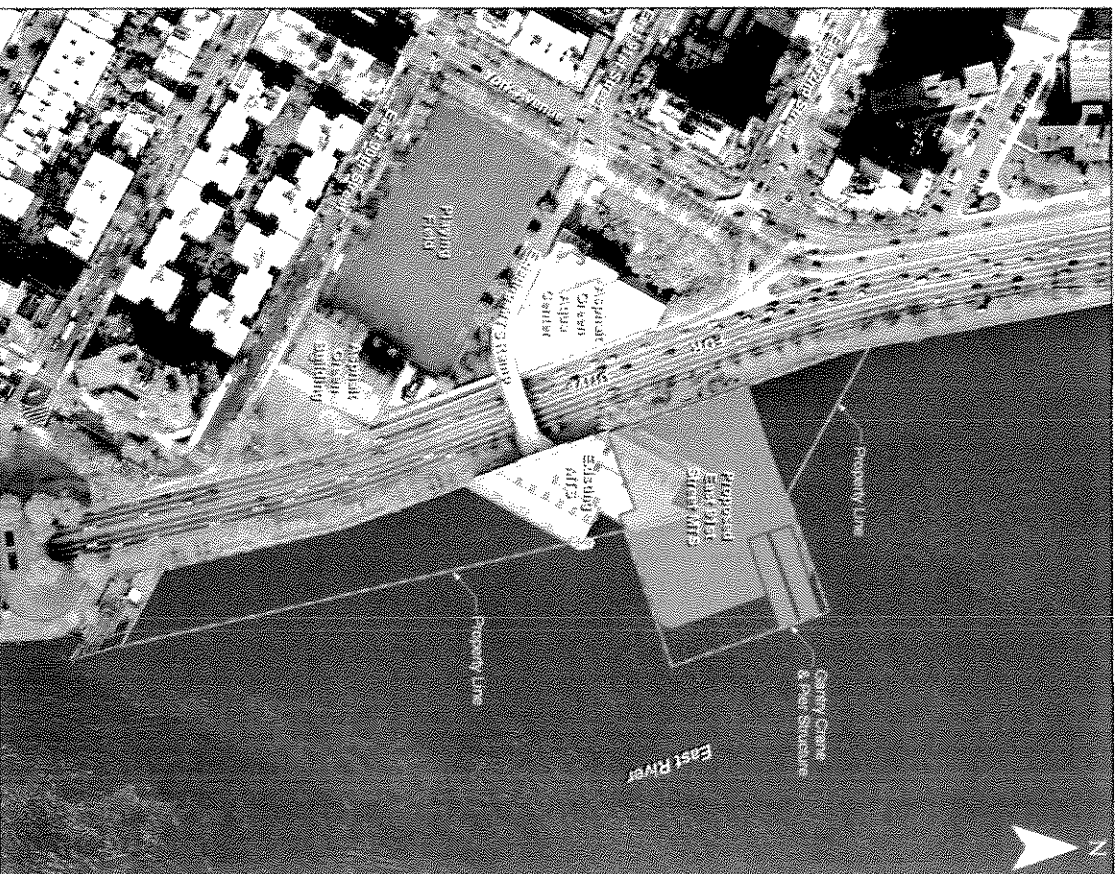
Key Dates

- Draft SWMP and Draft EIS issued: **October 2004**
- Final EIS issued: **April 2005**
- City Planning MTS Uniform Land Use Review Procedure siting action approved: **April 2005**
- Findings Statement issued: **February 2006**
- City Council adopted SWMP: **July 2006**
- NYSDEC approved SWMP: **October 2006**

DSNY - managed Waste: Long Term Export Facilities and Wastesheds



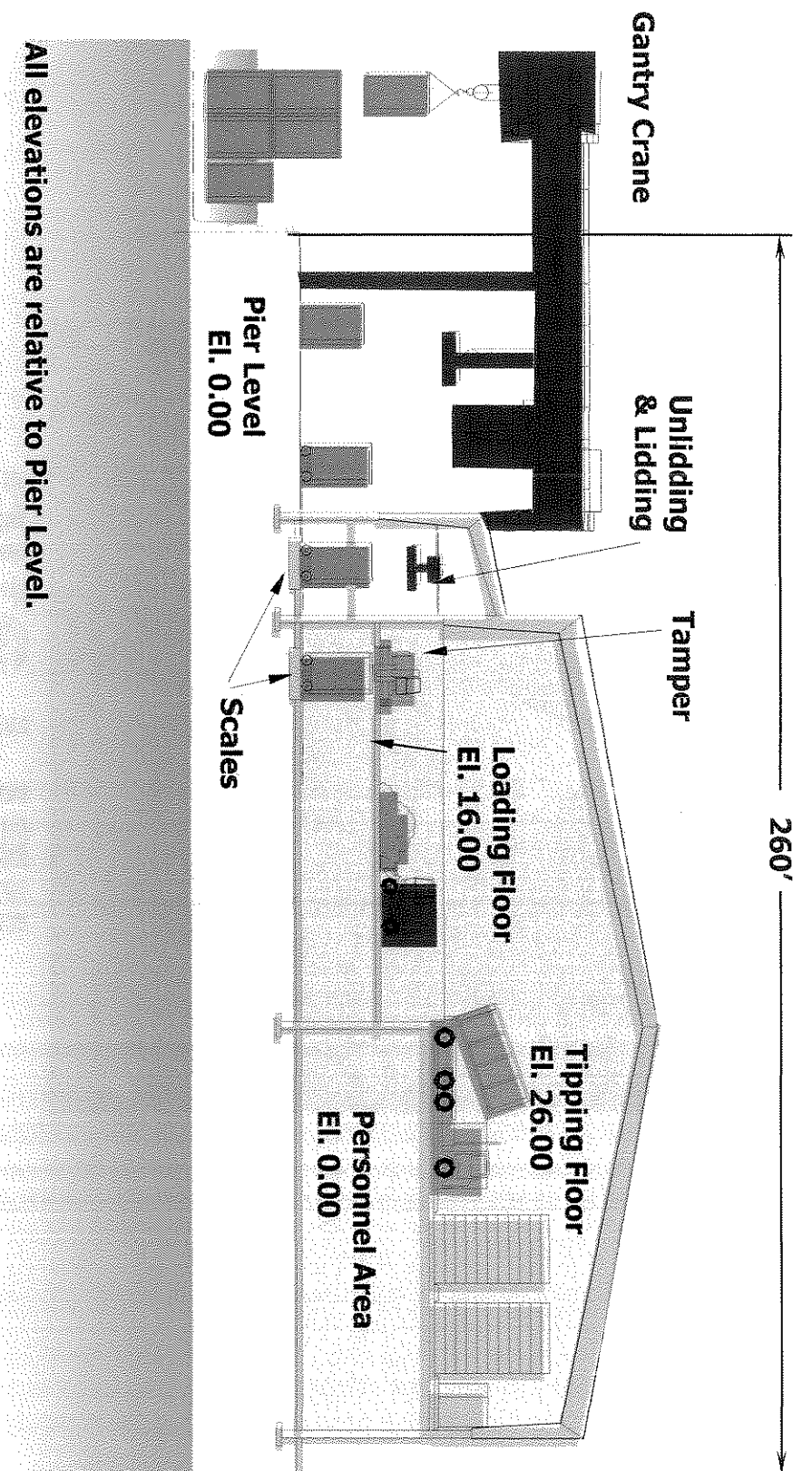
Site Plan



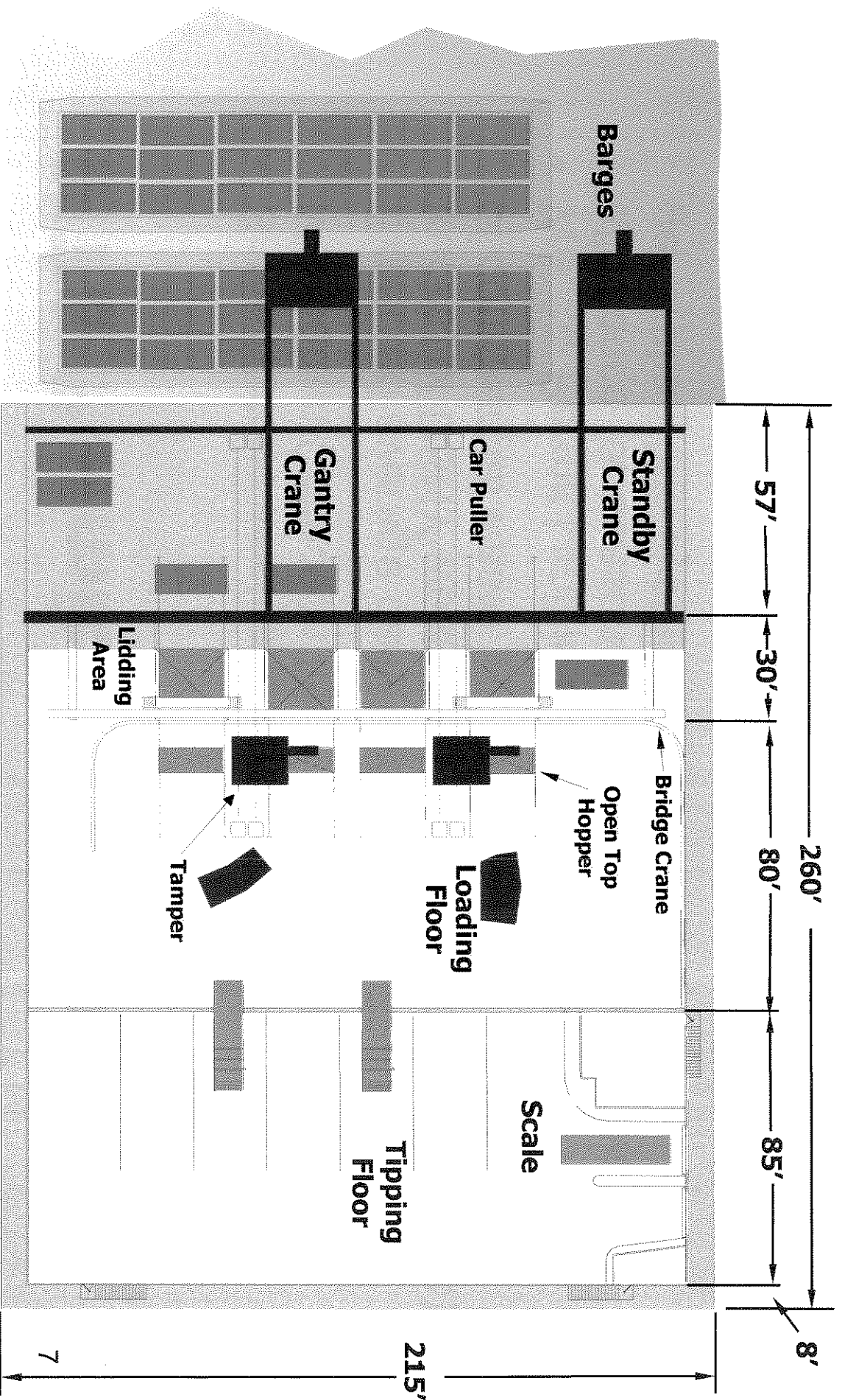
Site dimensions are approximate.
Aerial imagery from 2004.

0 55 110 220 330 440 feet

MTS Cross Section



MTS Floor Plan



MTS Permitted Capacity

- Same historic wasted as existing MTS from Manhattan Collection Districts 5, 6, 8 and 11.
- Expected average daily throughput is 720 tons (72 trucks) of DSNY waste and up to 780 tons (71 trucks) of commercial waste.
- Weekly Permit Limit is 9,864 tons (includes 20% allowance for seasonal variability, growth in waste generation and system redundancy).
- Maximum Peak Day Permit Limit is 1,860 tons - addresses DSNY post-holiday collections.
- Existing MTS operating permit was for 4,800 tons per day.

Key MTS Features

- All waste processed in enclosed building that maintains negative air pressure to prevent escape of odors.
- Treatment system neutralizes (not masks) odor in building exhaust air.
- All waste leaves MTS in sealed, leak-proof containers.
- FEIS found no significant unmitigable adverse impacts from MTS construction or operation.
- Commercial Waste will be limited to 780 tons (71 trucks) over the 12-hour, 8:00 p.m. to 8:00 a.m. shift.

Collection Vehicle Routes



Collection Truck Safety and Emissions

- A DSNY officer will be stationed at the bottom of the ramp when the MTS is accepting waste to:
 - Ensure pedestrian safety and
 - Re-direct collection trucks to DSNY garage to prevent on-street queuing.
- DSNY collection truck emissions (PM and NOx) will be 90% less than when the MTS last operated, with emissions comparable to natural-gas-fueled trucks.
- Commercial waste collection trucks will also use ultra low sulfur diesel fuel and most will have factory-installed particulate filters.

MTS NYSDEC Permit Status

- DSNY obtained NYSDEC Permits in 2009:
 - Part 360, Solid Waste Facility Permit;
 - Part 608/681 Marine Permits and Section 401 Water Quality Certification for dredging and in-water construction; and
 - Part 201 State Facility Air Permit (minor source)

MTS USACE Permit Status

- DSNY seeks US Army Corps Section 10/Section 404 Permits for in-water construction
 - Application submitted: **July 2008**
 - Public Hearing and Comment Period: **September 2008**
 - Draft Mitigation Plan submitted: **June 2011**
 - Supplemental Public Notice Period established: **July 25 through August 24, 2011**
 - DSNY final mitigation comment response to USACE: **February 22, 2012**
 - No construction contract will be awarded without a USACE Permit

Status of Litigation

- There have been challenges to the project based on SEQRA (the adequacy of the environmental review) and based on the public trust doctrine (whether the project would result in parkland alienation), and there has also been a challenge to the NYSDEC permits issued for the MTS.
- State Appellate Courts have upheld the City's position in each of these three litigations and dismissed the challenges.

MTS Request for Proposals for Waste Transport and Disposal

- DSNY is in negotiations with proposers for contracts to be awarded in 2012
- Two contracts will be awarded: One for North Shore and E. 91st Street MTSs and One for Hamilton Avenue and Southwest Brooklyn MTSs
- Service under the Contracts will begin in 2013 for the North Shore and Hamilton Avenue MTSs
- Contracts will require vendors to barge containers (48 containers/deck barge) to trans-loading sites for transport by ship or rail to disposal facilities

MTS Construction

- FY 2012 Capital budget includes \$125.4 million for the construction of the proposed East 91st Street Converted MTS
- Additional funds will be made available once bids are received and contract is awarded
- Value Engineering conducted in summer 2011 resulted in minor design changes
- Bid Solicitation was issued on January 24, 2012 by NYC Department of Design and Construction (DDC)
- DSNY and DDC will work closely with the community on any issues that arise during construction
- Construction duration is 3 years