

# **Second Avenue Subway**

## **Community Board 8 Second Avenue Subway Task Force Update**

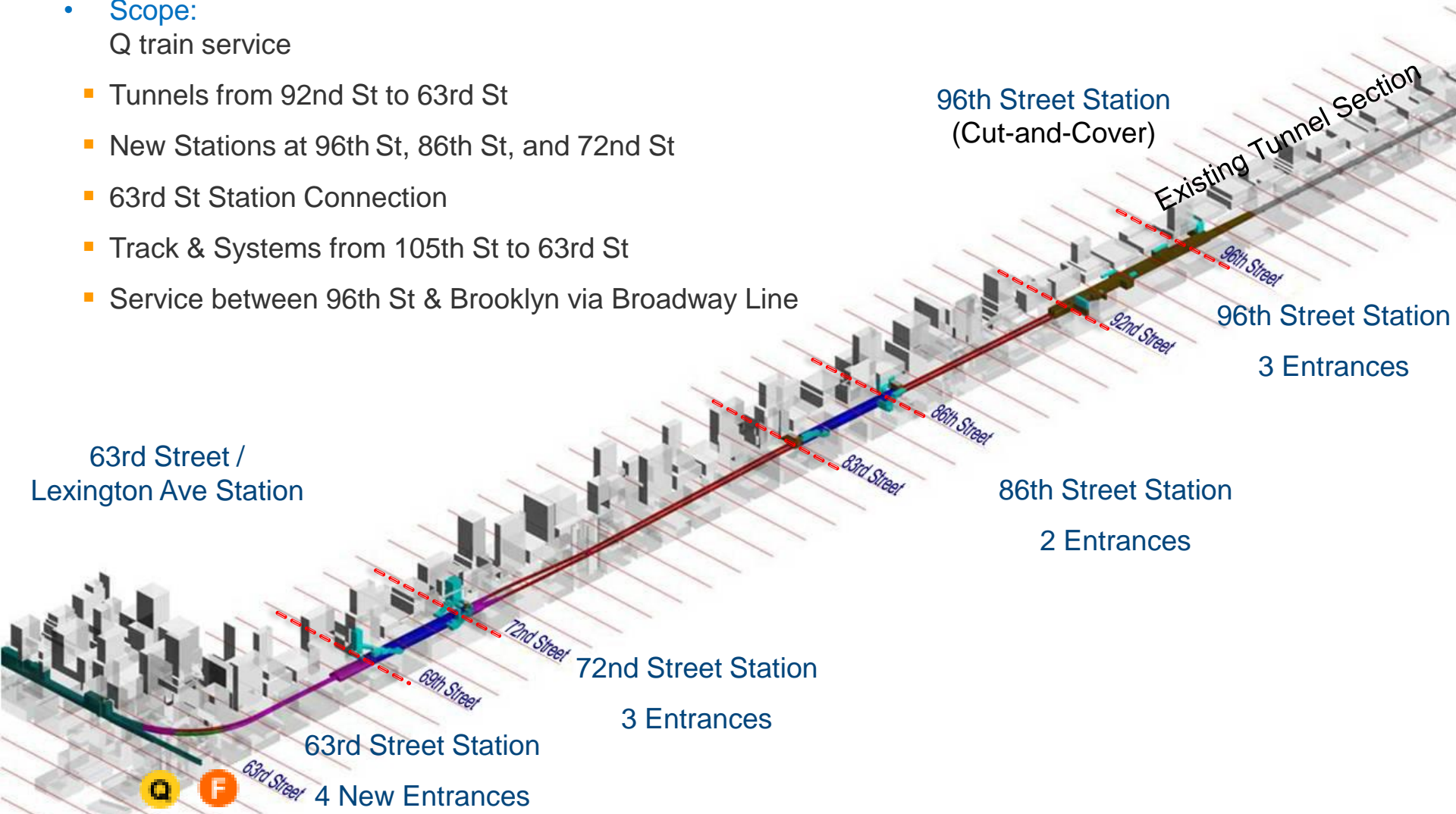
January 22, 2015

Tom Peyton  
Second Avenue Subway  
Project Director



# Phase 1 Overview

- Scope:
  - Q train service
  - Tunnels from 92nd St to 63rd St
  - New Stations at 96th St, 86th St, and 72nd St
  - 63rd St Station Connection
  - Track & Systems from 105th St to 63rd St
  - Service between 96th St & Brooklyn via Broadway Line



Phase 1: Target Cost-\$4.451B--- Ridership 200,000 --- Target Completion Date-2016

# Current Project Status

- Overall Construction Progress is 78% Complete (as of January 1, 2015)
- All 10 SAS Contracts have been awarded for Phase 1
- 5 Construction Contracts Completed:
  - Tunnel Boring Machine Tunneling
  - 86<sup>th</sup> St Excavation, Utility Relocation, and Road Decking
  - 96<sup>th</sup> St Site Work and Heavy Civil
  - 72nd St Cavern Mining, Tunnels and Heavy Civil (1/14/14)
  - 86<sup>th</sup> St Cavern Mining & Heavy Civil (12/16/14)



# 5 Active Contracts

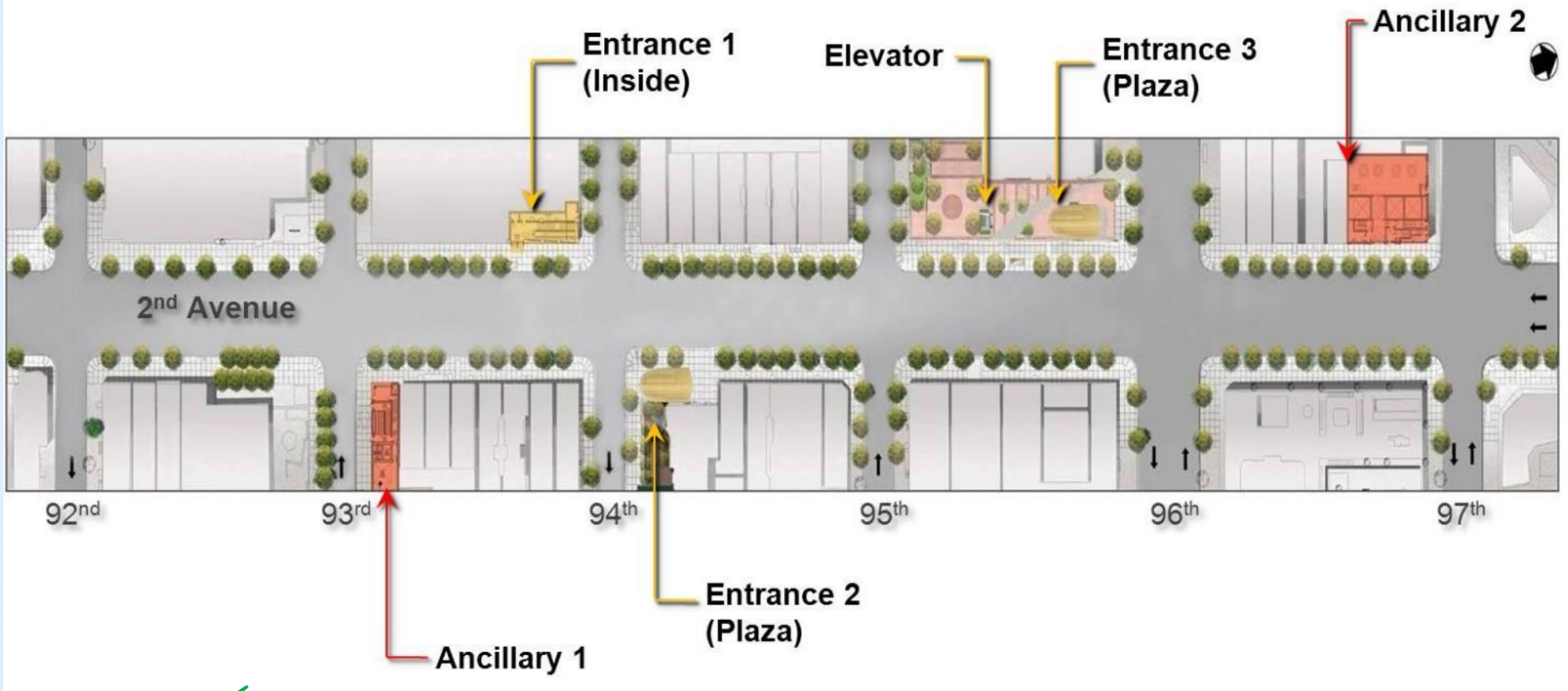
<b>96<sup>th</sup>St.</b>	Station Finishes, Systems, Ancillary Buildings and Entrances	59%
<b>86<sup>th</sup>St.</b>	Station Finishes, Systems, Ancillary Buildings and Entrances	27.3%
<b>72<sup>nd</sup> St.</b>	Station Finishes, Systems, Ancillary Buildings and Entrances	45.5%
<b>63<sup>rd</sup> St.</b>	Station Upgrade	85.9%
<b>All Stations</b>	Track, Power, Signals & Communications Systems	45.1%



# Stations



# 96<sup>th</sup> Street Station



## Heavy Civil, Structural and Utility Relocation Contract

Percent Complete: **100%**

Contract Value: **\$325,000,000**

Award Date: **May 28, 2009**

Substantial Completion: **November 5, 2013**

## Finishes, MEP Systems, Ancillary Buildings and Entrances Contract

Percent Complete: **58.7% %**

Contract Value: **\$324,600,000**

Award Date: **June 22, 2012**

Forecast Completion: **July 2016**



# 96th Street Station Progress

**Contract C2B is 58.7% complete as of January 1, 2015**

- Continued surface utility work on the east side of Second Avenue between 92<sup>nd</sup> and 99<sup>th</sup> Streets.
- Installed 2 of 9 escalator trusses in the main station. The contractor also began installing the chains, steps, escalator skirts, and wiring for these two escalators.
- Concrete for the floor slabs at Ancillary buildings 1 & 2 were poured in December 2014. Concrete pours have begun above street level.
- Milestones 6, 7, & 8 (full access communications rooms, signal rooms & traction power rooms) are on track to be achieved by the end of January 2015.



**Backfill over utility installations  
96<sup>th</sup> Street looking south**





Utility installation  
93rd – 94th Street and 2nd Avenue







Formwork for Ancillary 2 walls (Northwest corner 97<sup>th</sup> Street)





Formwork for Ancillary 1 walls (Northeast corner 93<sup>rd</sup> Street )





Platform level viewed from mezzanine  
95<sup>th</sup> Street looking north

# **Three-Month Look Ahead**

- Deck beam & roadway decking removal.
- Surface utility work on the east side of Second Avenue between 92<sup>nd</sup> and 99<sup>th</sup> Streets.
- Concrete pours above street level for walls and floors at Ancillary 1 & 2.
- Installation of HVAC ducts, masonry walls, and electrical conduit throughout the station.





# **Three-Month Look Ahead**

- Waterproofing installation, concrete pours, and installation of escalator trusses at entrances.
- Water main work in conjunction with DEP (reduction of Second Avenue travel lanes).
- Partial MPT switch to west side of Second Avenue (select locations).





96<sup>th</sup> Street Entrance 3 rendering  
NW corner 96<sup>th</sup> Street and Second Avenue





Rendering of 96<sup>th</sup> Street Station proposed art installation

Artist – Sarah Sze, MTA Arts and Design

# 86<sup>th</sup> Street Station



## Cavern Mining and Lining Contract

Percent Complete: **100%**

Contract Value: **\$332,860,000**

Award Date: **August 4, 2011**

Substantial Completion: **December 16, 2014**

## Finishes, Entrances, Ancillaries, and MEP Systems Contract

Percent Complete : **24%**

Contract Value: **\$208,376,000**

Award Date: **June 12, 2013**

Forecast Completion: **May 2016**





# 86<sup>th</sup> Street Station Milestones

- 86<sup>th</sup> Street Station heavy civil contract work was completed by Skanska-Traylor J.V. on December 16, 2014.
- The finishes contractor, Schiavone-Picone J.V. has access to all areas of the 86<sup>th</sup> Street Station.
- Removal of the employee trailers between E. 87<sup>th</sup> and E. 88<sup>th</sup> Streets.
- Restoration of the sidewalk and installation of the Bishop's Crook light poles on the north side of E. 86<sup>th</sup> Street between 1<sup>st</sup> and 2<sup>nd</sup> Avenues.
- Build out of the station entrances on E. 86<sup>th</sup> Street.



# 86<sup>th</sup> Street Station Sidewalk Restoration







86<sup>th</sup> Street Station Mezzanine Level  
Looking north from below 86<sup>th</sup> Street



## TBM tunnel under Second Avenue



# **Three Month Look Ahead**

## **86<sup>th</sup> Street Station Area**

### **E. 78<sup>th</sup> to E. 79<sup>th</sup> Streets (center of Second Avenue)**

- Temporarily reduce traffic to two lanes east of the center work zone and two lanes west of the center work zone as a means for placing concrete in the tunnels below.

### **E. 83<sup>rd</sup> to E. 85<sup>th</sup> Streets – South Cavern**

- Construction of mezzanine levels and Ancillary 1 structure.

### **E. 86<sup>th</sup> to E. 87<sup>th</sup> Streets - North Cavern**

- Begin construction of the Ancillary 2 building on the northwest side of 86<sup>th</sup> Street.



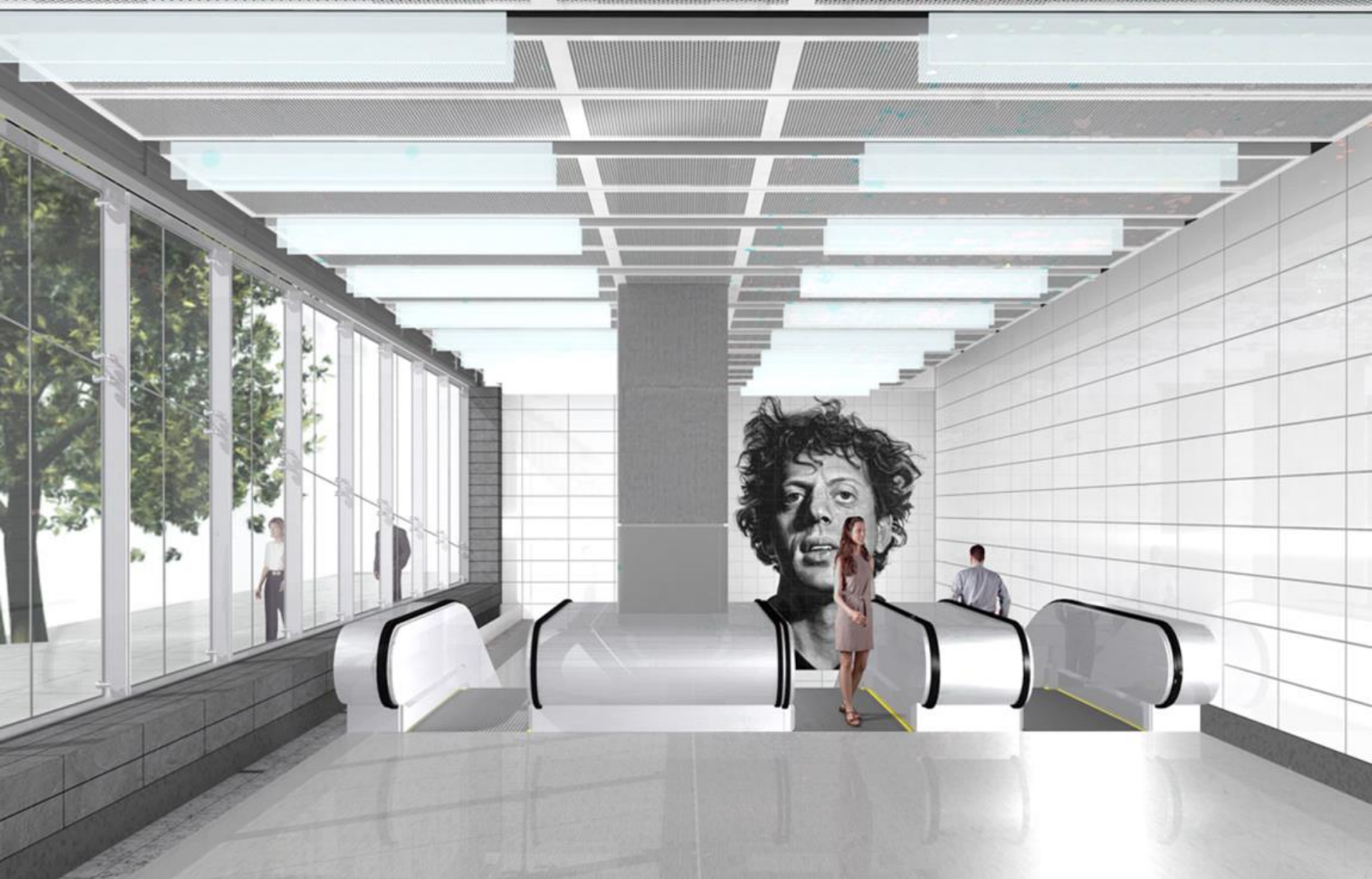


**86<sup>th</sup> Street Entrance 1 Rendering**

83<sup>rd</sup> Street and Second Avenue

86TH ST STATION – ENTRANCE 1 @ 83RD ST & 2ND

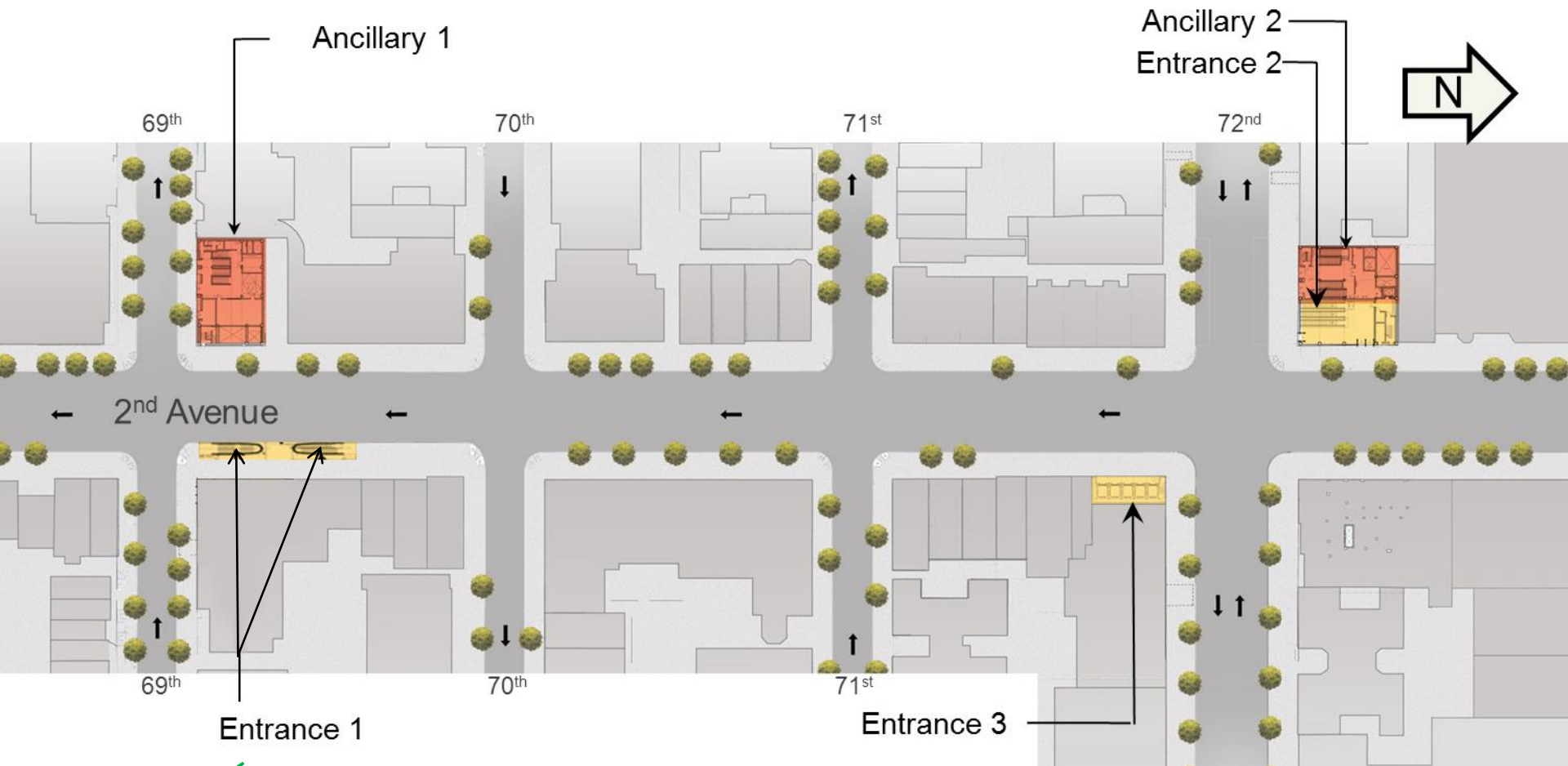




## Rendering of 86<sup>th</sup> Street Station Art Installation

Artist – Chuck Close, MTA Arts and Design commissioned work  
Portraits in mosaic and tile representing NYC cultural figures & family

# 72<sup>nd</sup> Street Station



## **Cavern Mining, Tunnels, and Heavy Civil Contract**

Percent Complete : **99%**

Contract Value incl. AWOs: **\$469.5 M**

Award Date: **October 1, 2010**

Substantial Completion: **January 14, 2014**

## **Finishes, MEP Systems, Ancillary Buildings and Entrances Contract**

Percent Complete : **45.5%**

Contract Value incl. AWOs: **\$276.4 M**

Award Date: **February 14, 2013**

Forecast Completion: **October 2016**



# Milestones

- Entrance 1 excavation 67% complete as of January 1<sup>st</sup>
- Platform concrete pours 100% complete as of January 14<sup>th</sup>
- Rail installation commenced in October 2014

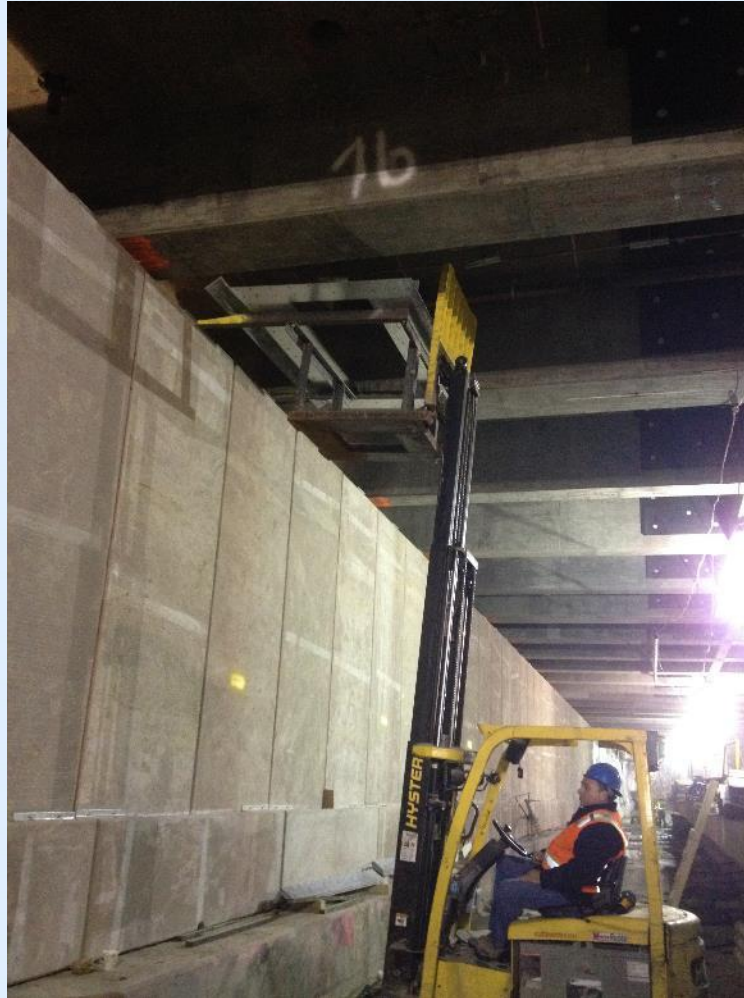


# Current Progress



Main Cavern – Mezzanine level masonry wall installation

# Current Progress



Main Cavern (platform level) – Installation of precast wall panels



# Current Progress

Ancillary#2 NW corner 72<sup>nd</sup> Street



Installation of rebar and forms



# Current Progress



Entrance 1  
escalator/stairway incline  
viewed from main cavern





# Current Progress

Entrance 1  
excavation  
underway  
301 East 69<sup>th</sup>  
Street garage



MTA Capital Construction



# Three-Month Look Ahead

## **Main Station Cavern:**

- Platform pours, installation of precast wall panels at the platform level, installation of conduits
- Mechanical, electrical and plumbing systems installation
- Installation of new operations and maintenance rooms, and precast panels within mezzanine areas

## **Entrance 1:**

- Excavation work for Entrance 1 construction within garage at 301 E. 69<sup>th</sup> Street
- Installation of “Support of Excavation” wall for street entrance and commencement of excavation on Second Avenue
- Work zone reconfiguration to allow for excavation and construction on the surface
- Street work hours: 7 a.m. – 10 p.m.





# Three-Month Look Ahead

## Ancillary 1, Ancillary 2, Entrance 3

- Installation of waterproofing and building the Ancillary 1, Ancillary 2 and Entrance 3 structures
- Concrete pumping at Ancillary 1, Ancillary 2 and Entrance 3
- Installation of new rough terrain crane at Ancillary 1 to replace existing crane

## Miscellaneous

- Work zone changes at Ancillary 1 and Entrance 1 to facilitate street excavation for new entrance and placement of new crane for ancillary structure
- Concrete truck staging as needed between 74<sup>th</sup> and 76<sup>th</sup> Streets



72<sup>nd</sup> Street  
Entrance 2 /  
Ancillary 2  
Rendering

NW corner  
72<sup>nd</sup> Street and  
Second Avenue



72ND ST STATION – ENTRANCE 2 / ANCILLARY 2



# Rehabilitation of Existing 63rd Street Station



## Station Upgrade Contract

Percent Complete: **85.9%**

Contract Value incl. AWOs: **\$190.8 M**

Award Date: **January 13, 2011**

Forecast Completion: **November 2015**

# Milestones

- Excavation and installation of permanent structural supports for Entrance 1 (200 East 63rd Street) – was completed January 5<sup>th</sup>.
- Construction for Entrance 3 (NE corner of 63rd Street and Third Avenue) – Completed 100% of concrete pours for columns.
- Complete platform finishes – Summer 2015
- Condo Royale plaza restoration (NW corner of 63rd Street and Third Avenue) – To begin summer 2015 pending approval of construction agreement by Food Emporium.





# Current Work Zones (SE corner of 63<sup>rd</sup> Street & Third Avenue)



Entrance 1 – looking east

MTA Capital Construction

# Current Work Zones

## (NW corner of 63<sup>rd</sup> Street & Third Avenue)



Entrance 2 and Ancillary 2



# Current Work Zones

## (NE corner of 63<sup>rd</sup> Street & Third Avenue)



Entrance 3



# Current Progress



Demolition at Entrance 1 (200  
East 63<sup>rd</sup> Street)





# Current Progress



Installation of track wall tile framing at upper platform  
(On 63<sup>rd</sup> St and Lexington Av)

MTA Capital Construction

# Three-Month Look Ahead

## STATION

- Installation of service carrier, ductwork and electrical conduit at the upper platform level
- Installation of platform finishes, including ceilings, track wall tile framing, column covers, platform paving, and lighting fixtures
- Masonry wall, ceiling panel, and door installation throughout station
- Mechanical, electrical and plumbing systems installation in new station area





# Three-Month Look Ahead

## **ENTRANCE 1**

**(200 East 63rd Street)**

- Concrete and steel installation for new entrance way

## **ANCILLARY 2**

**(Northwest corner of 63<sup>rd</sup> Street and Third Avenue)**

- Construction of elevator shaft within plaza work zone area
- Receive materials via sidewalk access hatch and reconfigure MPT along 63<sup>rd</sup> Street



# Three-Month Look Ahead

## **OTHER SURFACE WORK**

- Reopen 63<sup>rd</sup> Street sidewalk grates along 139 East 63<sup>rd</sup> Street and 140 East 63<sup>rd</sup> Street
- Entrance 4 (southwest corner of 63<sup>rd</sup> and Third) work will commence with the modification of the pedestrian walkway here next week.

## **THIRD AVENUE STORAGE/WORK ZONE**

### **(Third Avenue between 63<sup>rd</sup> and 64<sup>th</sup> Streets)**

- Work zone will remain until (Summer 2016) for materials storage and small office trailer for systems installation contractor







## Proposed Rendering of 63<sup>rd</sup> Street Plaza (design not finalized)

SW corner of 63<sup>rd</sup> Street and Third Avenue





**Rendering of 63<sup>rd</sup> Street Station Art Installation, Mezzanine Level (Area 5)**  
Artist – Jean Shin, MTA Arts and Design commissioned work



# Systems Installation

- Low Vibration Track (LVT) System Being Installed
  - Track to be installed: 22,000 ft.
  - Track installed to date: 5,080 ft.
  - Aluminum 3<sup>rd</sup> rail installed: 3,400 ft.
  - Track delivered to site: 14,600 ft.

Note: Track as reported here consists of 2 rails

- Traction Power work ongoing for three substations and four circuit breaker houses
- Signal equipment being installed
- Communications systems work is ongoing

## Track, Power, Signals and Communications Systems Contract

Percent Complete: **45.1%**

Contract Value incl. AWOs: **\$282.8 M**

Award Date: **January 18, 2012**

Forecast Completion: **October 2016**



LVT Track installed with Aluminum 3<sup>rd</sup> rail



# Questions

