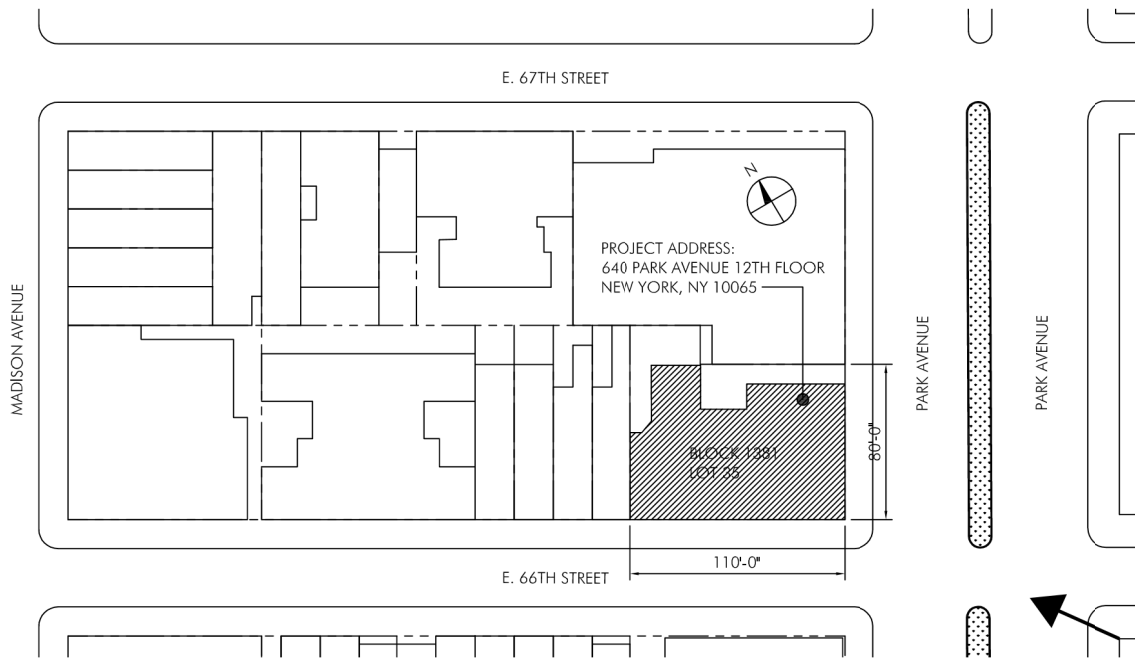


WINDOW REPLACEMENT
RESIDENCE OF THE SWISS CONSUL GENERAL
640 PARK AVENUE - 12TH FLOOR
NEW YORK, NY 10065



LOCATION PLAN



1940S TAX LOT PHOTO

MATTHEW VIEDERMAN ARCHITECT PC
41 UNION SQUARE WEST SUITE 705
NEW YORK, NY 10003

WINDOW REPLACEMENT
640 PARK AVENUE 12th FLOOR
NYC

LPC PRESENTATION

3 of 9



VIEW D: LOOKING AT SOUTHWEST CORNER



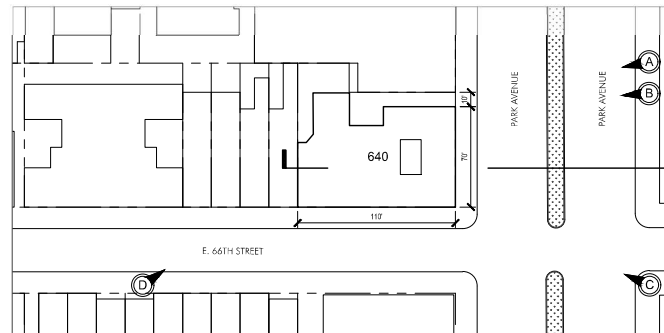
VIEW C: LOOKING AT SOUTHEAST CORNER



VIEW B: LOOKING AT NORTHEAST CORNER



VIEW A: LOOKING AT NORTHEAST CORNER



MATTHEW VIEDERMAN ARCHITECT PC
41 UNION SQUARE WEST SUITE 705
NEW YORK, NY 10003

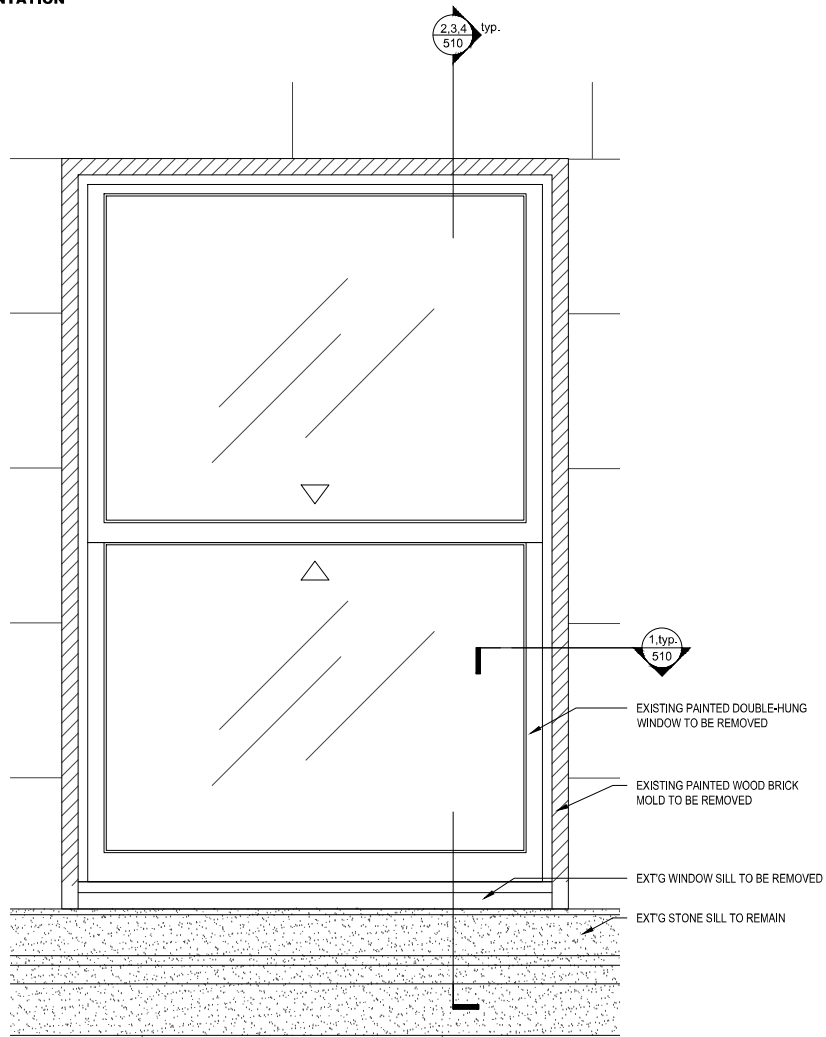
WINDOW REPLACEMENT
 640 PARK AVENUE 12th FLOOR
 NYC



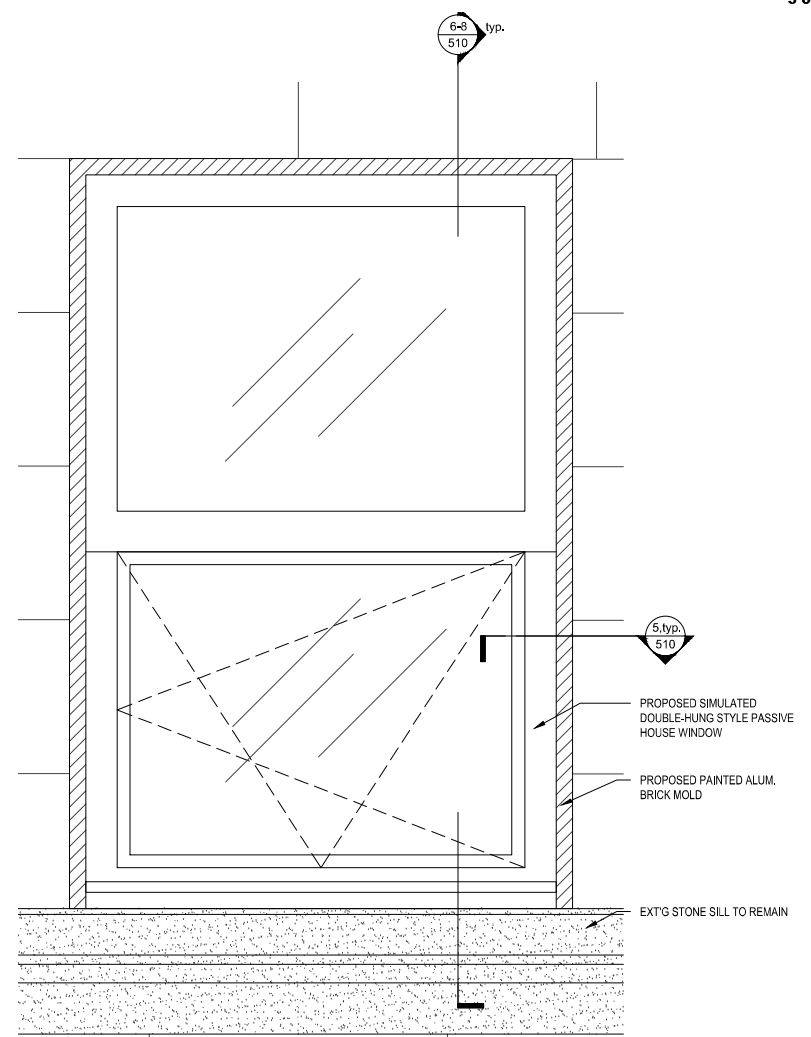
VIEW LOOKING SOUTH AT DEEP FENESTRATION OF EXISTING ALUMINUM REPLACEMENT WINDOWS



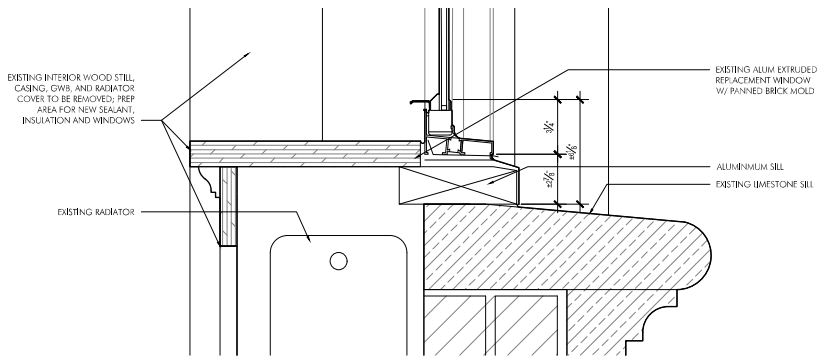
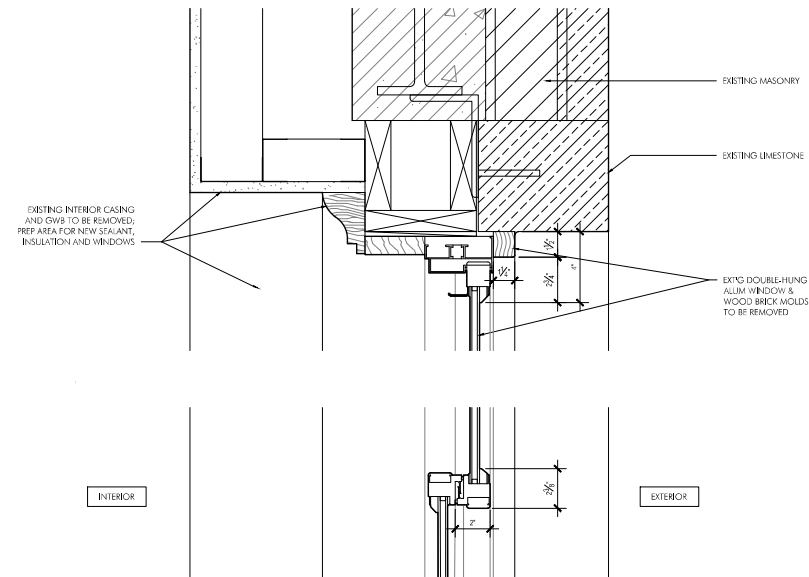
VIEW UP TOWARDS STRIKE & HEAD OF EXISTING ALUMINUM REPLACEMENT WINDOWS



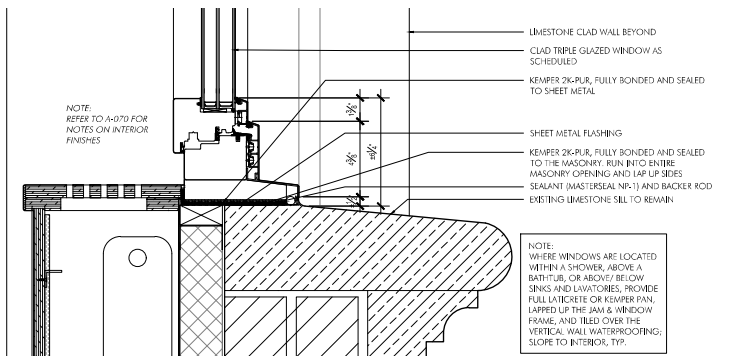
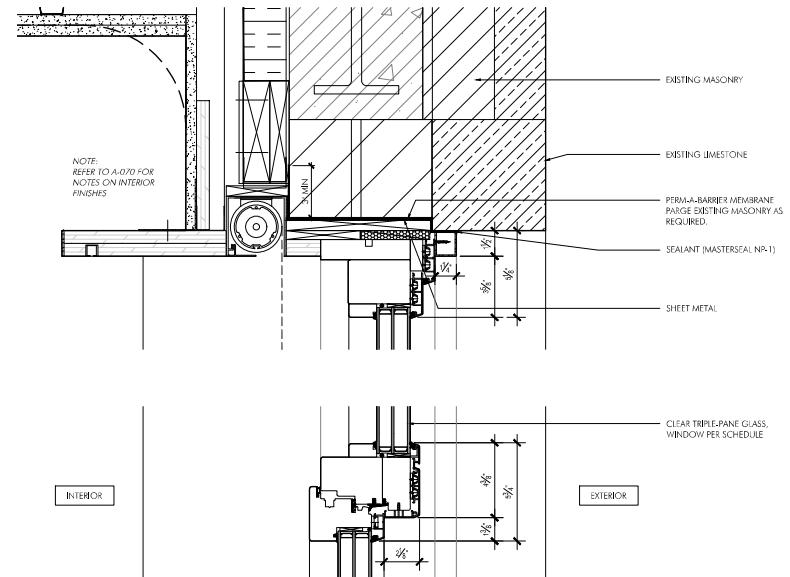
EXISTING:
ELEVATION OF TYPICAL ALUMINUM REPLACEMENT DOUBLE HUNG WINDOW



PROPOSED:
ELEVATION OF TYPICAL SIMULATED DOUBLE HUNG WINDOW



EXISTING:
SECTION DETAIL OF TYPICAL ALUMINUM REPLACEMENT DOUBLE HUNG WINDOW

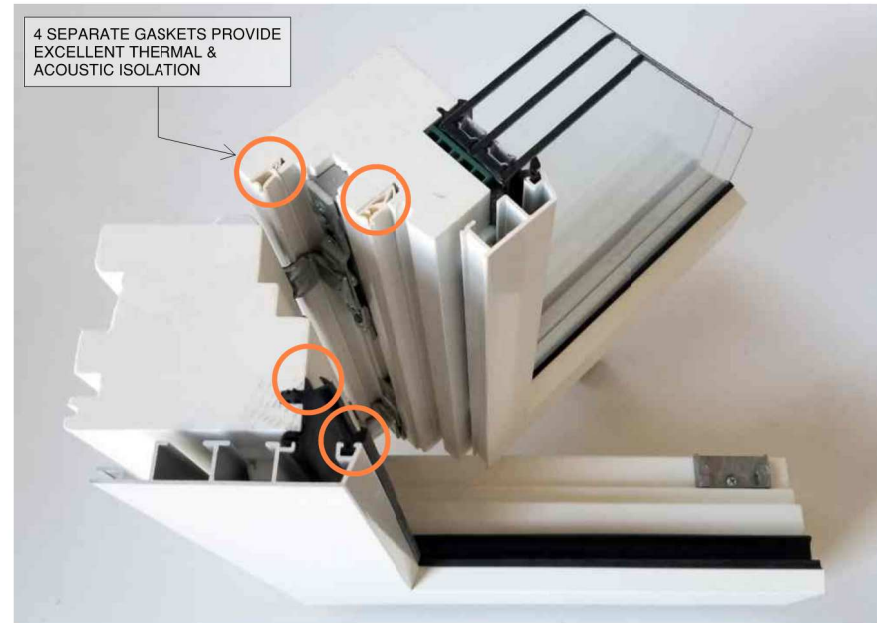


PROPOSED:
SECTION DETAIL OF TYPICAL SIMULATED DOUBLE HUNG WINDOW





PROPOSED:
PHOTO OF SAMPLE WINDOW



PROPOSED:
PHOTO OF SAMPLE WINDOW FROM ABOVE



PROPOSED:
WINDOW & BRICK MOLD COLOR
RAL 9005 BLACK MATTE



LPC APPROVED SIMULATED DOUBLE-HUNG WINDOWS UPPER WEST SIDE, MANHATTAN



LPC APPROVED SIMULATED DOUBLE-HUNG WINDOWS IN BROOKLYN