

**MADMADMADMADMADM**





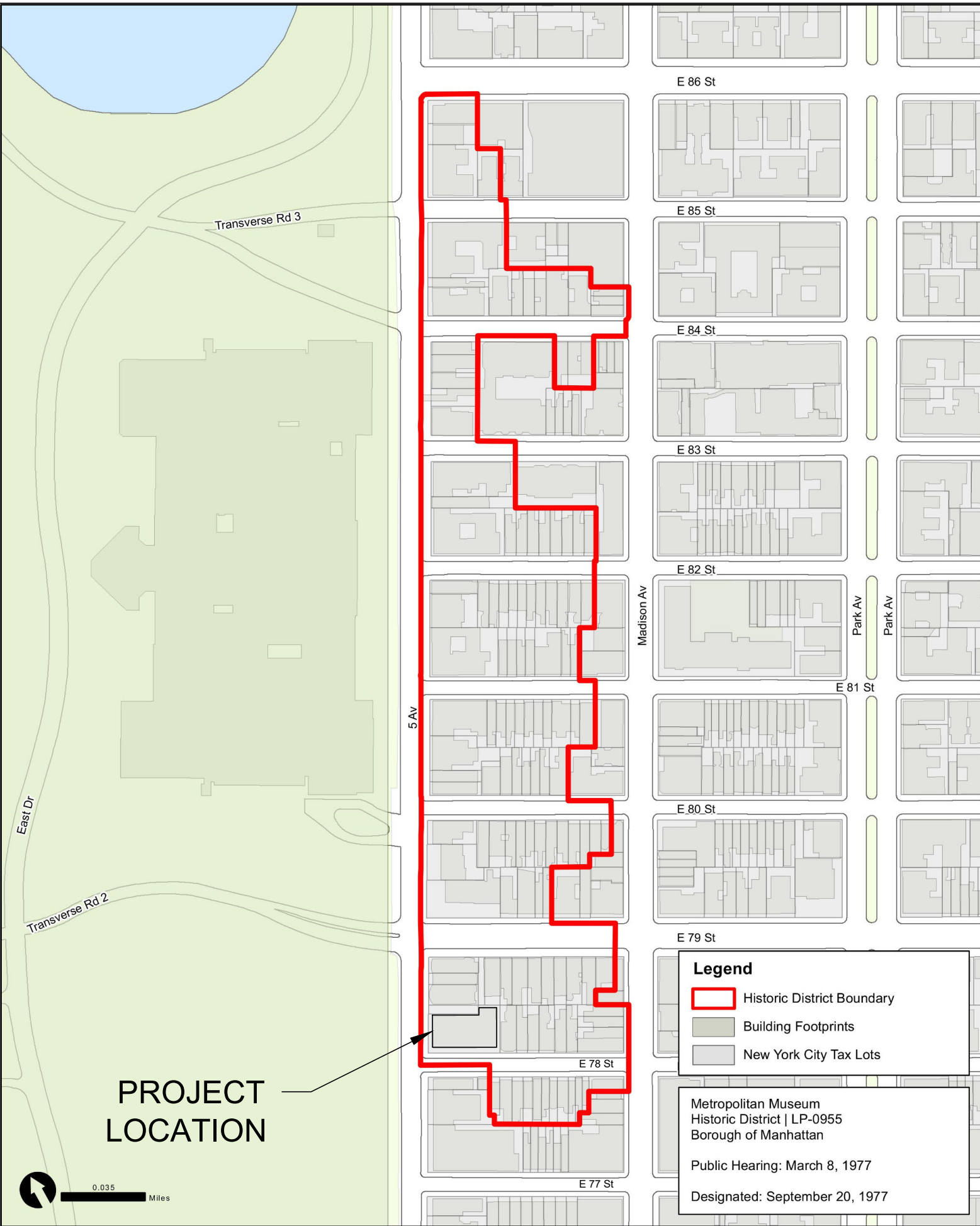
21 HISTORICAL TAX PHOTO 1980  
NTS



11 PHOTO OF CURRENT CONDITIONS 2023  
NTS



20 NYC TAX MAP  
NTS



10 METROPOLITAN MUSEUM HISTORIC DISTRICT (RED OUTLINE)  
NTS

ADDRESS: 1 EAST 78TH STREET  
TAX BLOCK: 1393  
TAX LOT: 1  
ZONE: R10 & R8B  
MAP: 8C



**DUKE MANSION**  
1 East 78th Street  
New York, NY 10075

architect  
**MAD**  
Matiz Architecture & Design  
244 5th Ave, 5th Floor  
New York, NY 10001  
T. 212 982 4613  
www.MAD-NYC.com

structural engineer  
**SUPERSTRUCTURES**  
ENGINEERS + ARCHITECTS  
32 Avenue of the Americas  
New York, NY 10013  
T. 212 505 1133  
www.SUPERSTRUCTURES.com

revision	date	drawing title
10		
9		
8		
7		
6		
5		
4		
3	COMMUNITY BOARD 8 PRESENTATION	12.09.24
2	100% DD/LPC SUBMISSION	10.28.24
1	50% DESIGN DEVELOPMENT	12.22.23

project number  
2201A

date  
12.09.24

scale  
AS NOTED

SITE PLAN & HISTORIC  
PHOTO

**LPC-02**

MADMADMADMADMAD

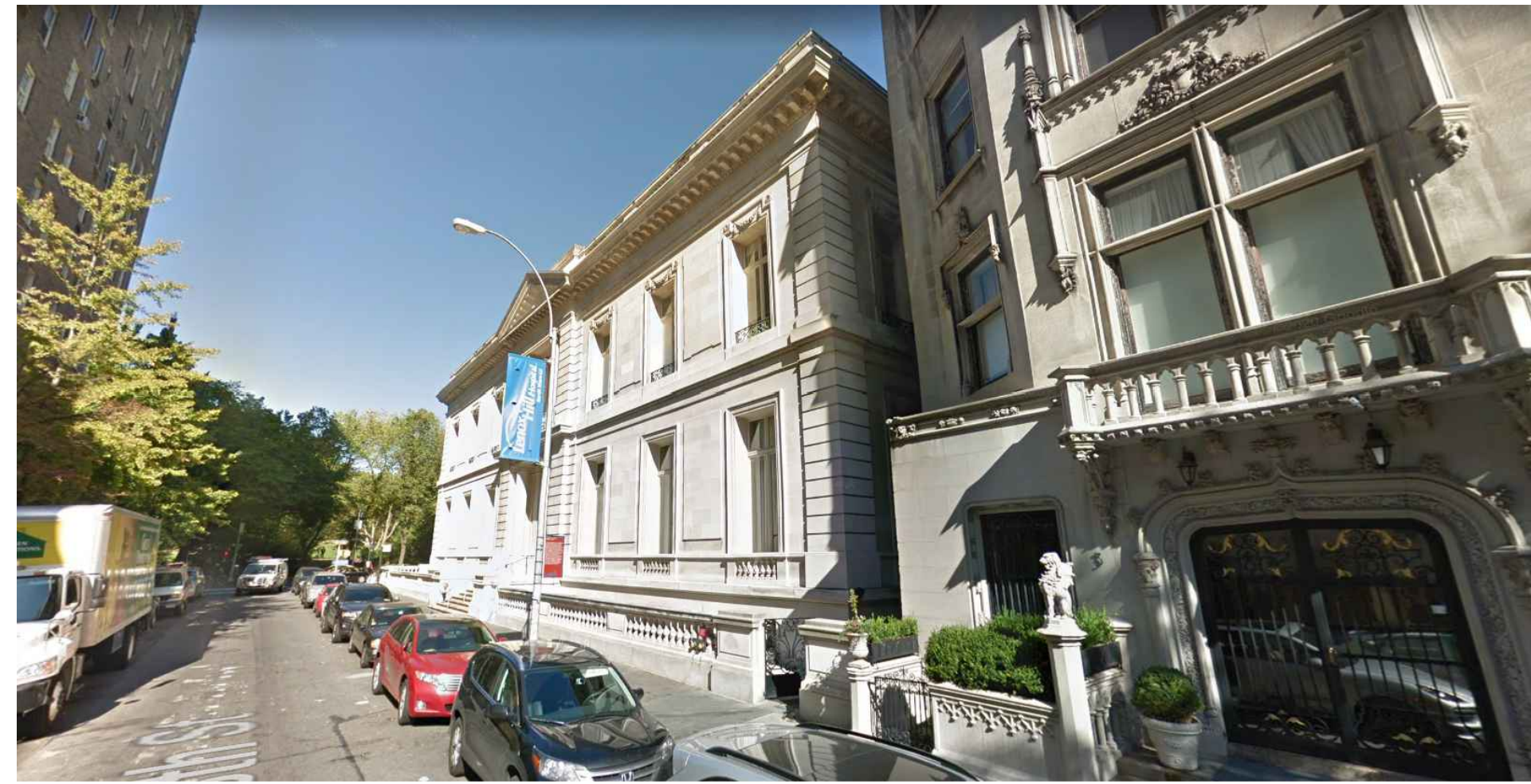




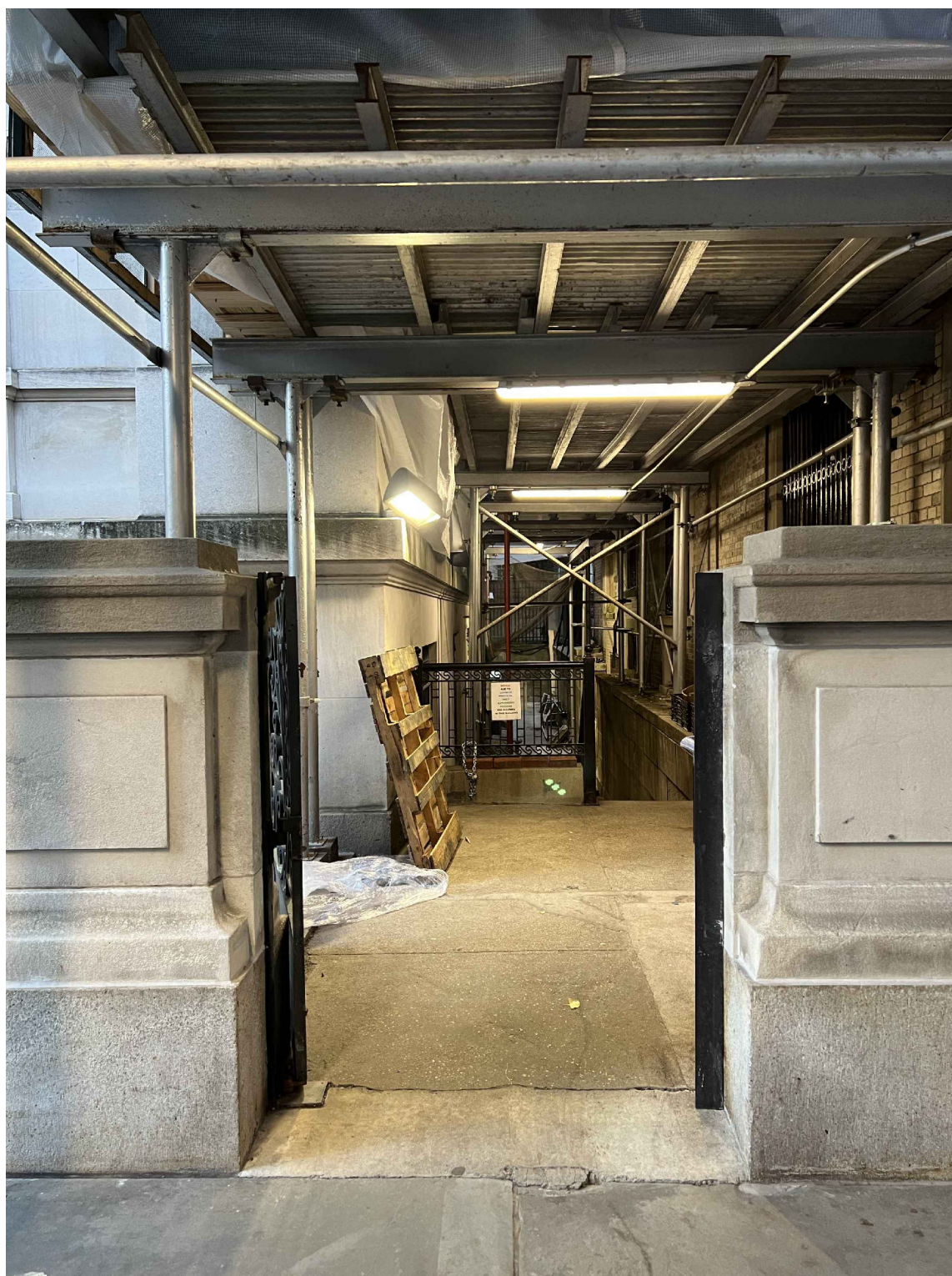
32 EXISTING NORTHERN VIEW OF FRONT FACADE  
NTS



31 EXISTING NORTHERN VIEW FROM BUILDING CORNER  
NTS



30 EXISTING NORTHERN VIEW FROM FRONT OF 3 E. 78TH ST.  
NTS

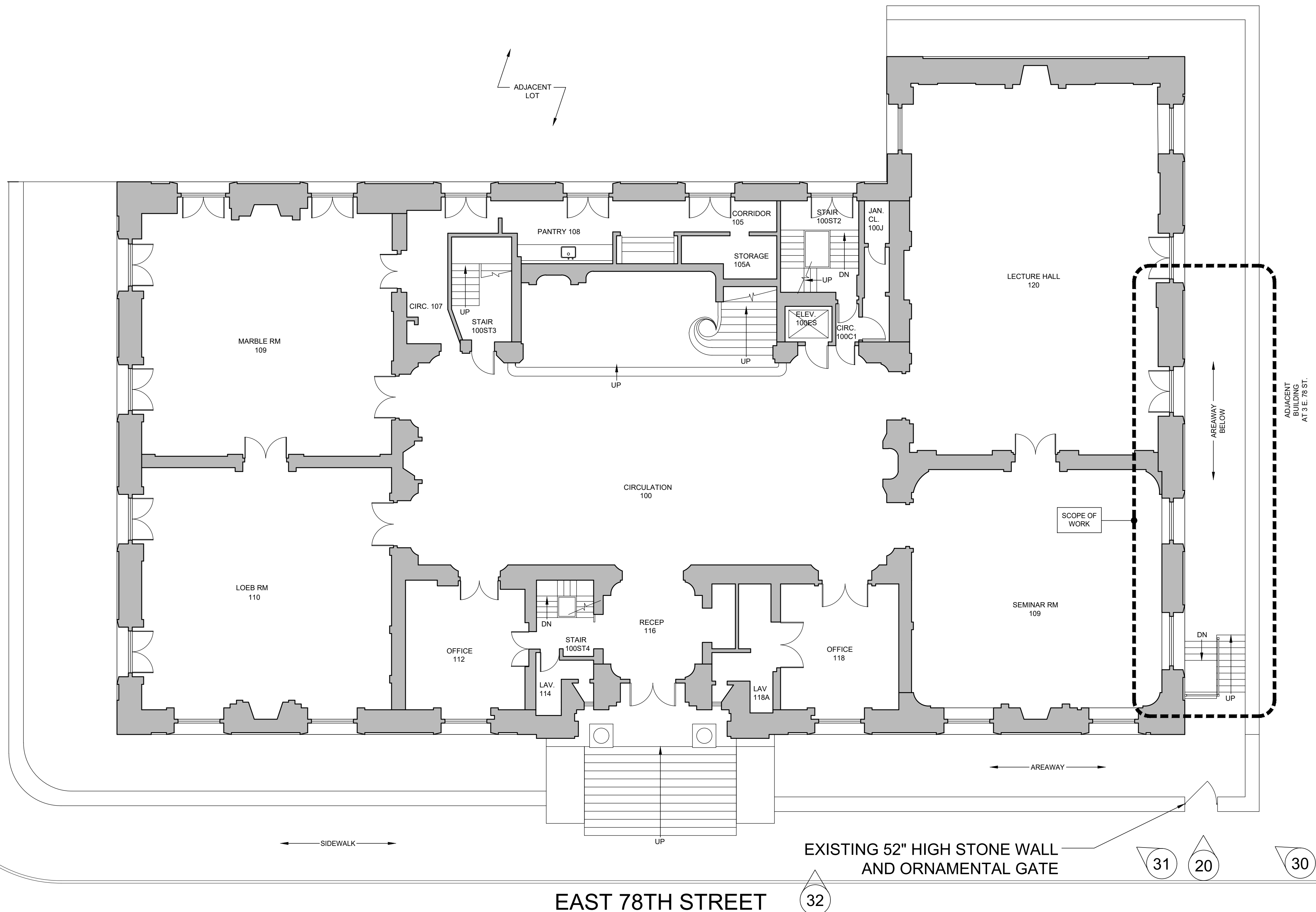


20 EXISTING EAST 78TH STREET VIEW FROM SIDEWALK  
NTS

## PROJECT SCOPE:

- PROVIDE ADA ACCESS TO THE BASEMENT FLOOR
- INSTALL ADA LIFT ON EAST SIDE OF BUILDING WITHIN AREAWAY
- MAJORITY OF PROPOSED IMPROVEMENTS ARE HIDDEN FROM STREET LINE OF SIGHT
- NO CHANGE TO EXTERIOR FACADE
- REBUILDING OF EXTERIOR ACCESS STAIRWAY DUE TO DETERIORATING STRUCTURAL STEEL. (RELATED AND SEPARATE PROJECT BY NYU WITH OTHER PROFESSIONAL)

FIFTH AVENUE



10 EXISTING FIRST FLOOR PLAN  
SCALE: 1/8" = 1' - 0"



DUKE MANSION  
1 East 78th Street  
New York, NY 10075

architect

MAD

Matiz Architecture & Design  
244 5th Ave, 5th Floor  
New York, NY 10001  
T. 212 982 4613  
www.MAD-NYC.com

structural engineer

SUPERSTRUCTURES  
ENGINEERS + ARCHITECTS

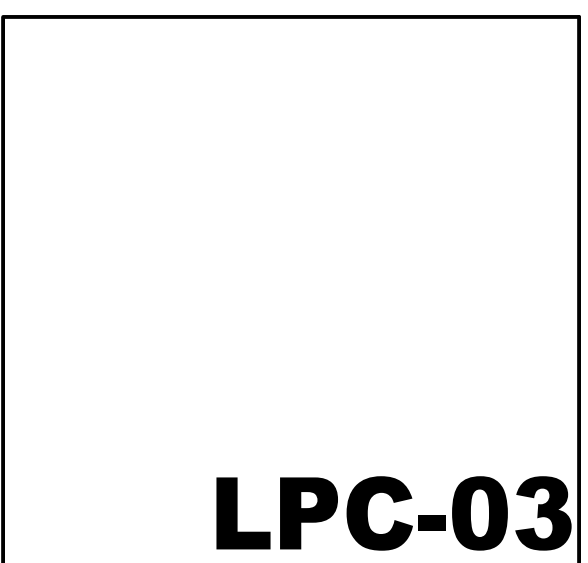
32 Avenue of the Americas  
New York, NY 10013  
T. 212 505 1133  
www.SUPERSTRUCTURES.com

10	
9	
8	
7	
6	
5	
4	
3	COMMUNITY BOARD 8 PRESENTATION
2	100% DD/LPC SUBMISSION
1	50% DESIGN DEVELOPMENT

revision	date

## FIRST FLOOR REFERENCE PLAN

project number	2201A
date	12.09.24
scale	AS NOTED

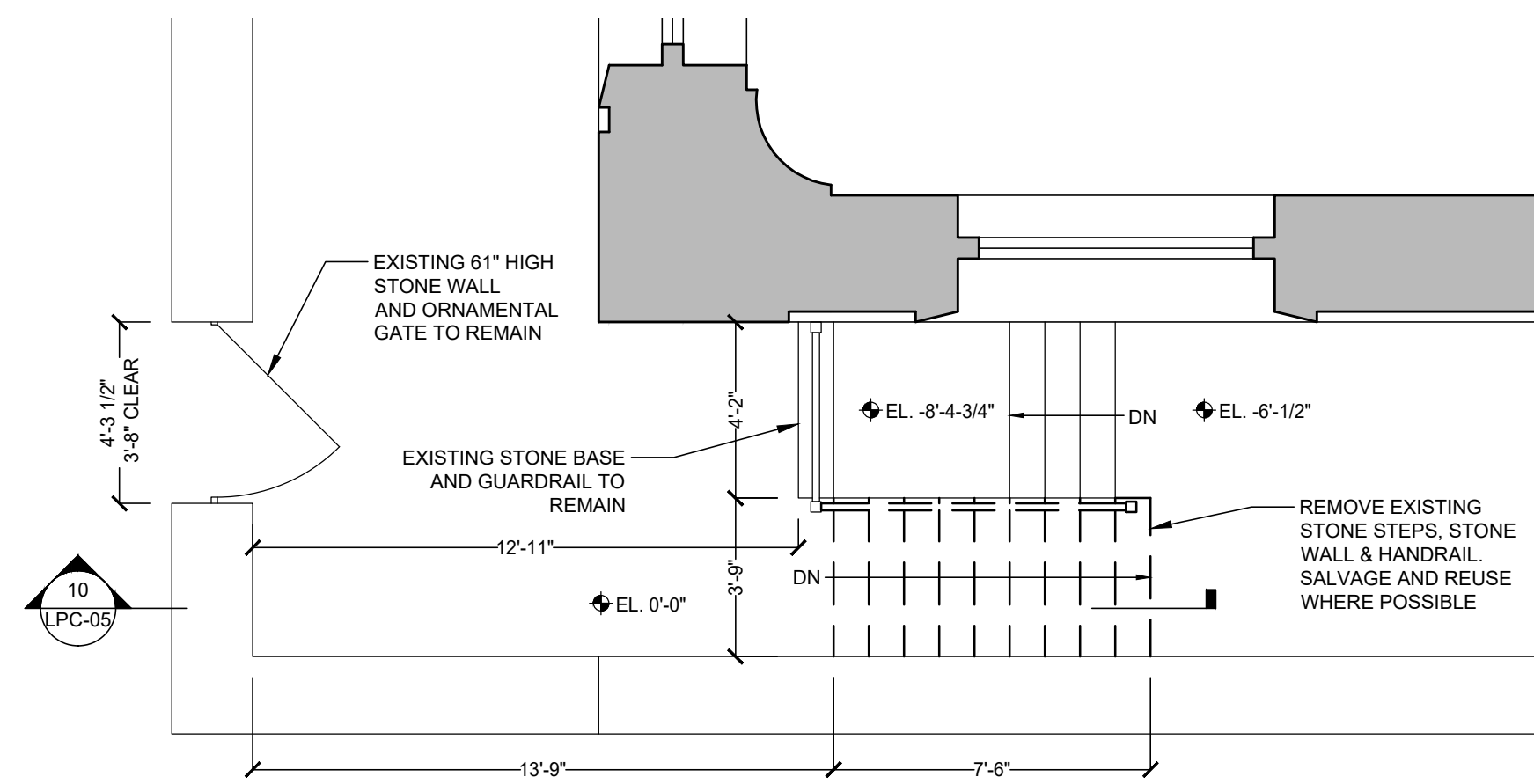


MADMADMADMADMAD

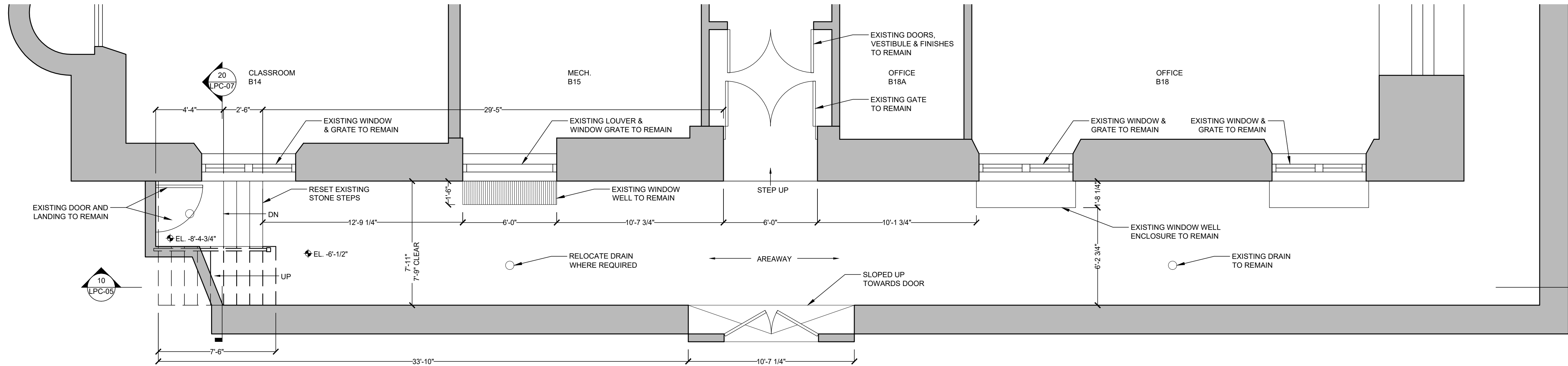




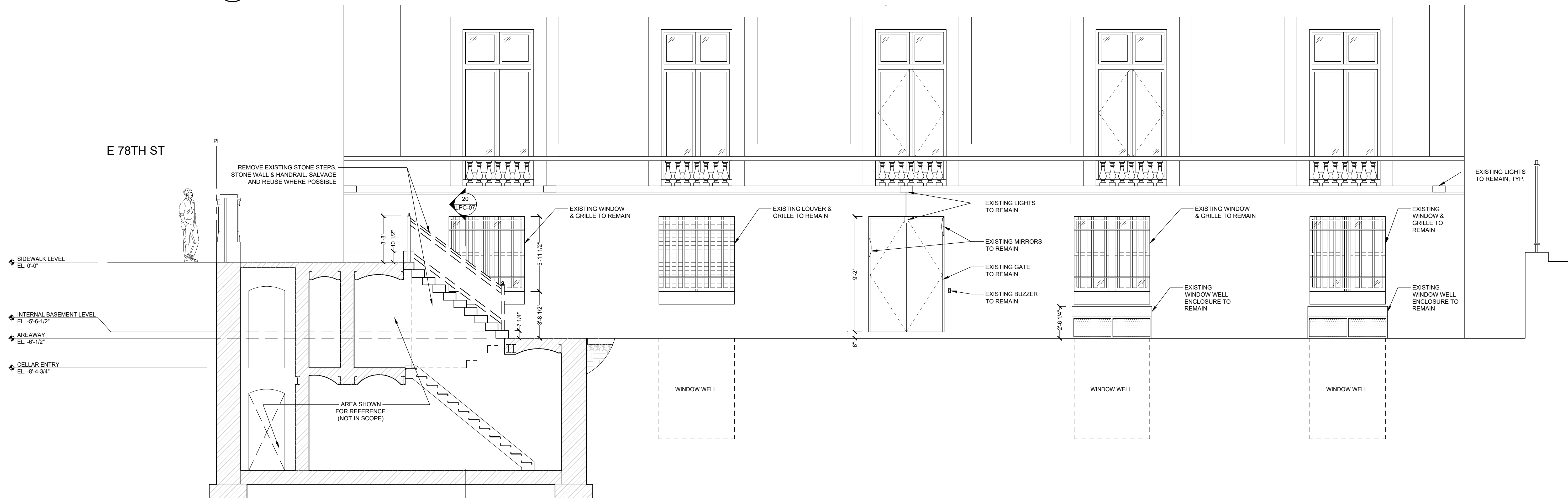




30 EXISTING FIRST FLOOR EAST AREAWAY PLAN  
SCALE: 1/4" = 1' - 0"



20 EXISTING BASEMENT EAST AREAWAY PLAN  
SCALE: 1/4" = 1' - 0"



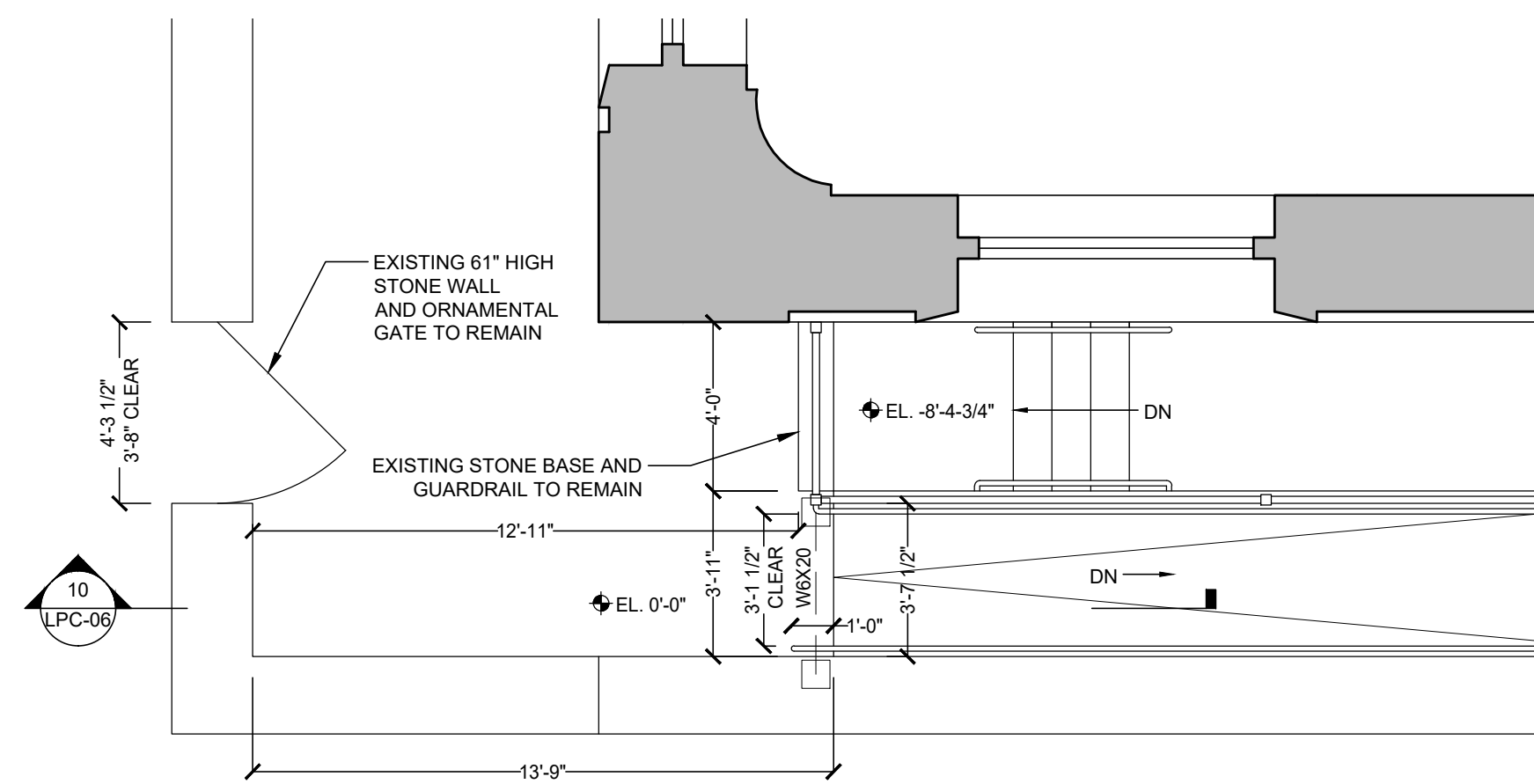
10 EXISTING WEST SECTION/ELEVATION AT EAST AREAWAY  
SCALE: 1/4" = 1' - 0"

10		
9		
8		
7		
6		
5		
4		
3	COMMUNITY BOARD 8 PRESENTATION	12.09.24
2	100% DD/LPC SUBMISSION	10.28.24
1	50% DESIGN DEVELOPMENT	12.22.23

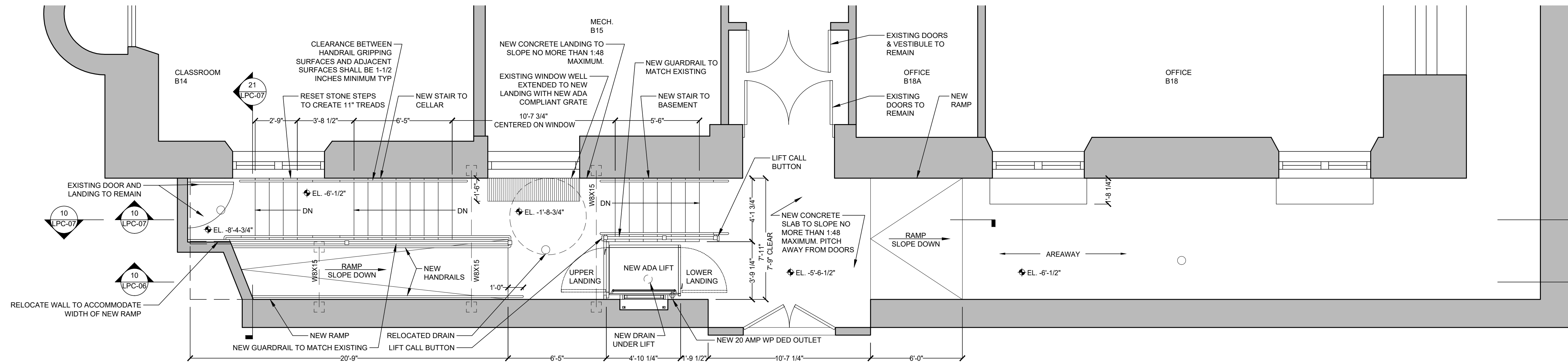
revision	date	drawing title
		EXISTING BASEMENT & 1ST FL PLAN, SECTION & ELEVATION
		project number 2201A
		date 12.09.24
		scale AS NOTED



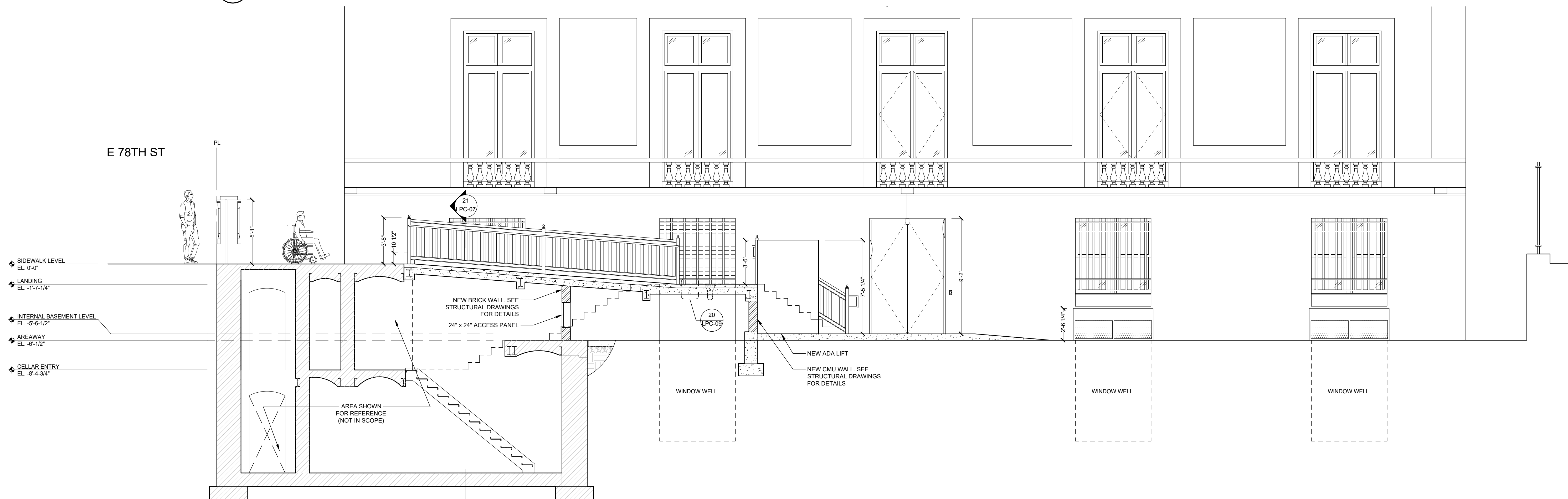
SEE STRUCTURAL DRAWING SET  
FOR SIZING & STRUCTURAL DETAILS



**30** PROPOSED FIRST FLOOR EAST AREAWAY PLAN  
SCALE: 1/4" = 1' - 0"



**20** PROPOSED BASEMENT EAST AREAWAY PLAN  
SCALE: 1/4" = 1' - 0"

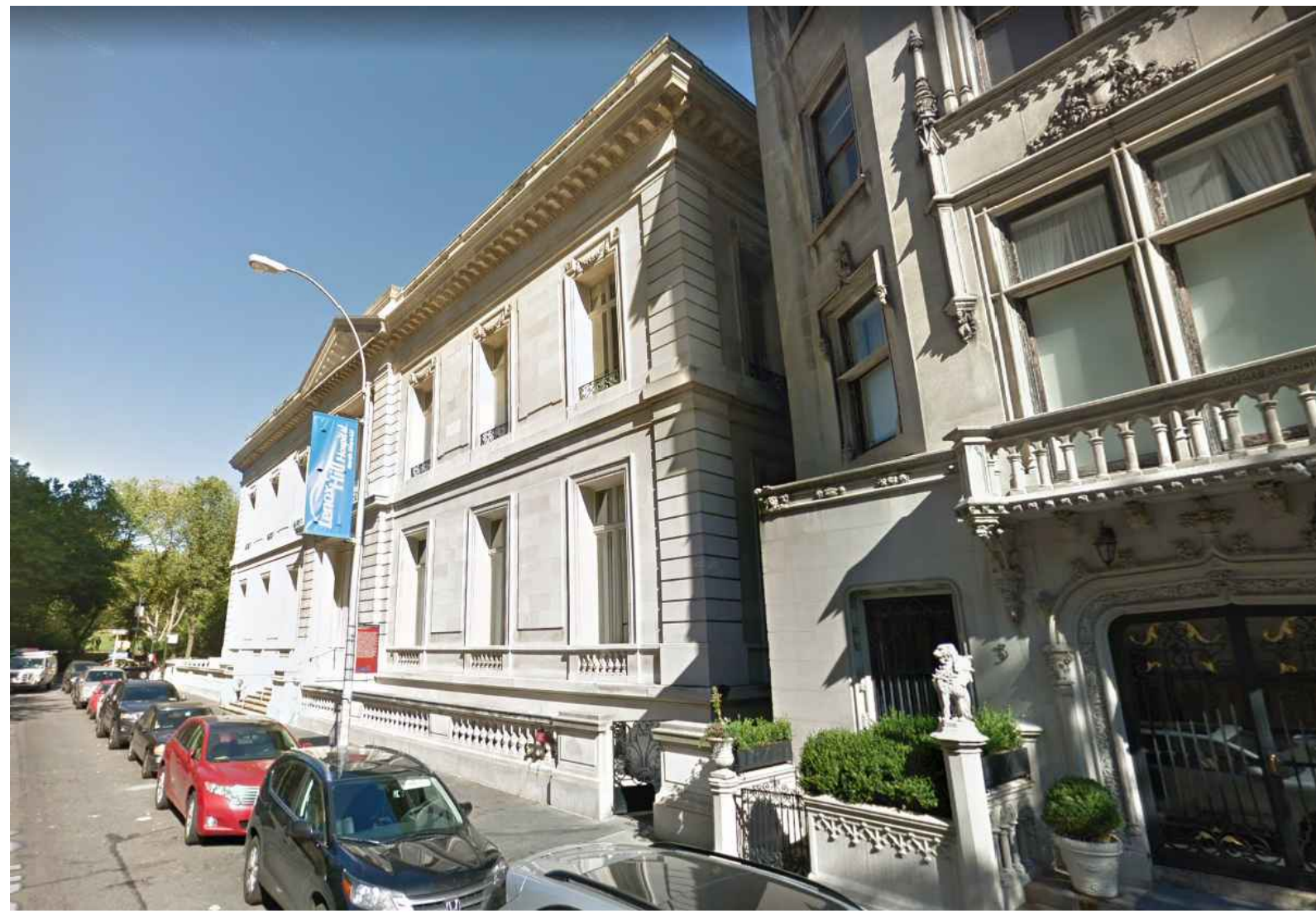


**10** PROPOSED WEST SECTION/ELEVATION AT EAST AREAWAY  
SCALE: 1/4" = 1' - 0"

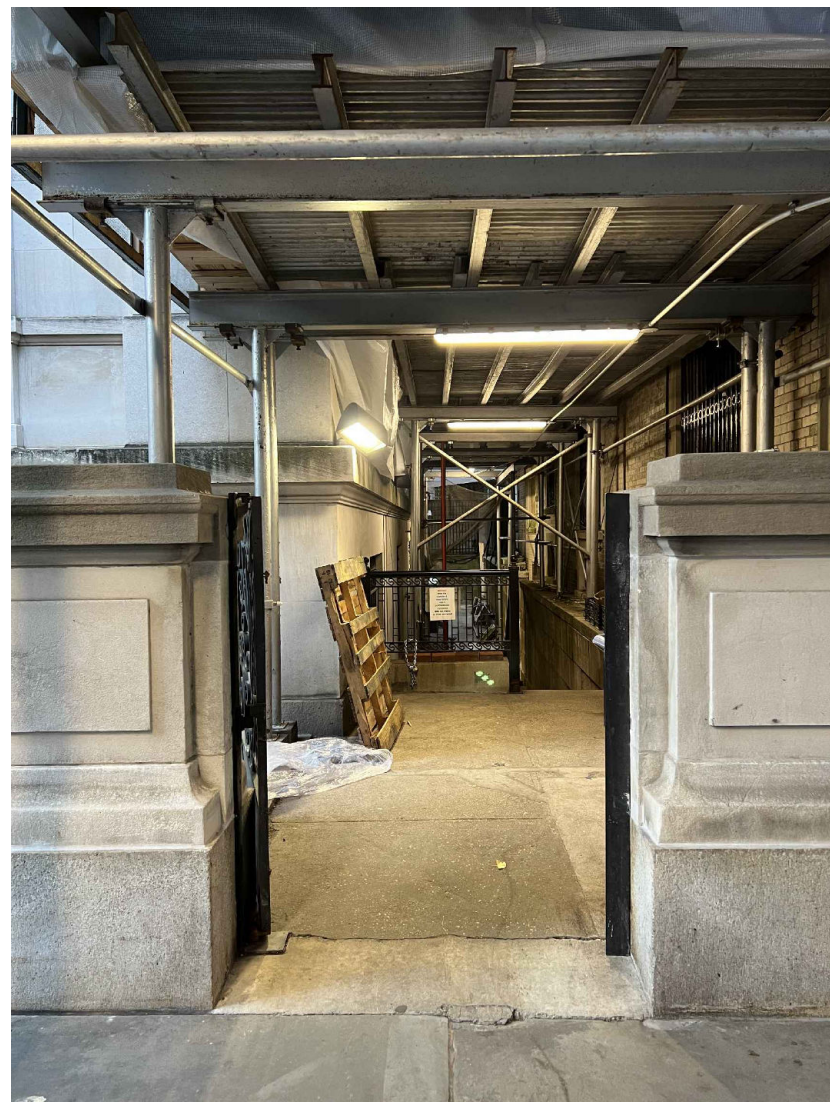
10		
9		
8		
7		
6		
5		
4		
3	COMMUNITY BOARD 8 PRESENTATION	12.09.24
2	100% DD/LPC SUBMISSION	10.28.24
1	50% DESIGN DEVELOPMENT	12.22.23

revision	date	drawing title
		PROPOSED BASEMENT & 1ST FL PLAN, SECTION & ELEVATION
		project number 2201A
		date 12.09.24
		scale AS NOTED

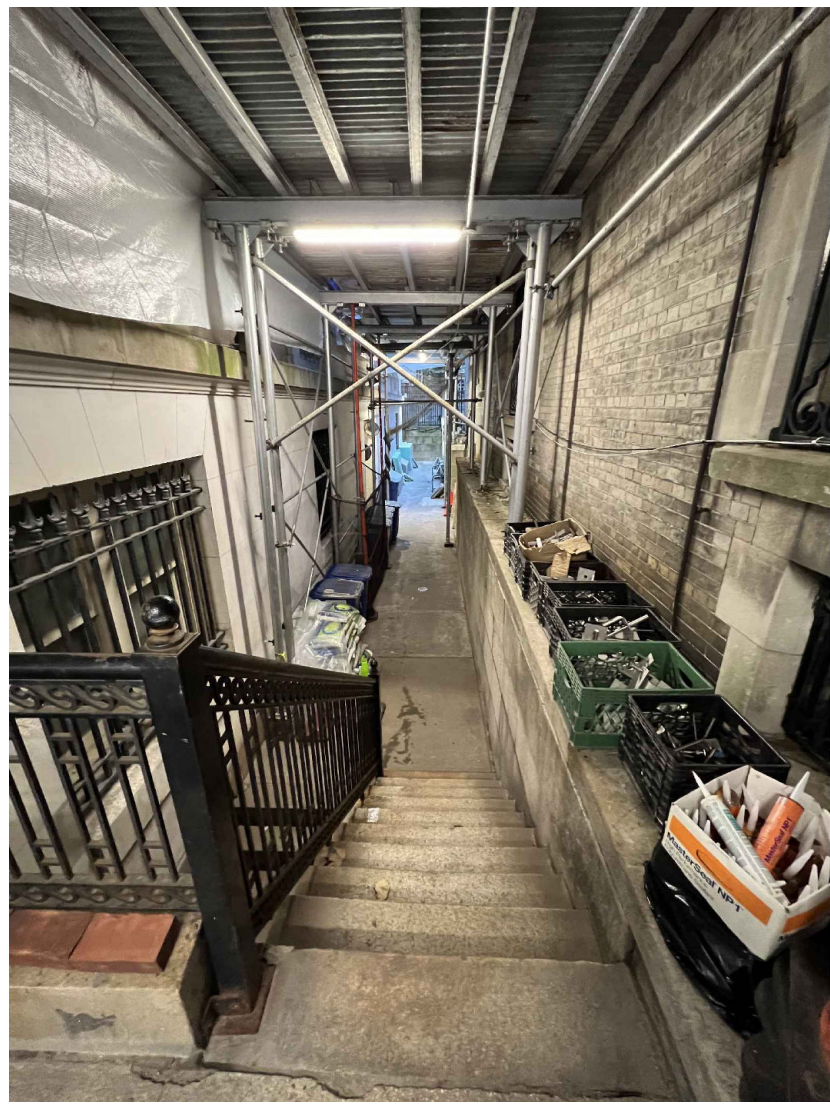




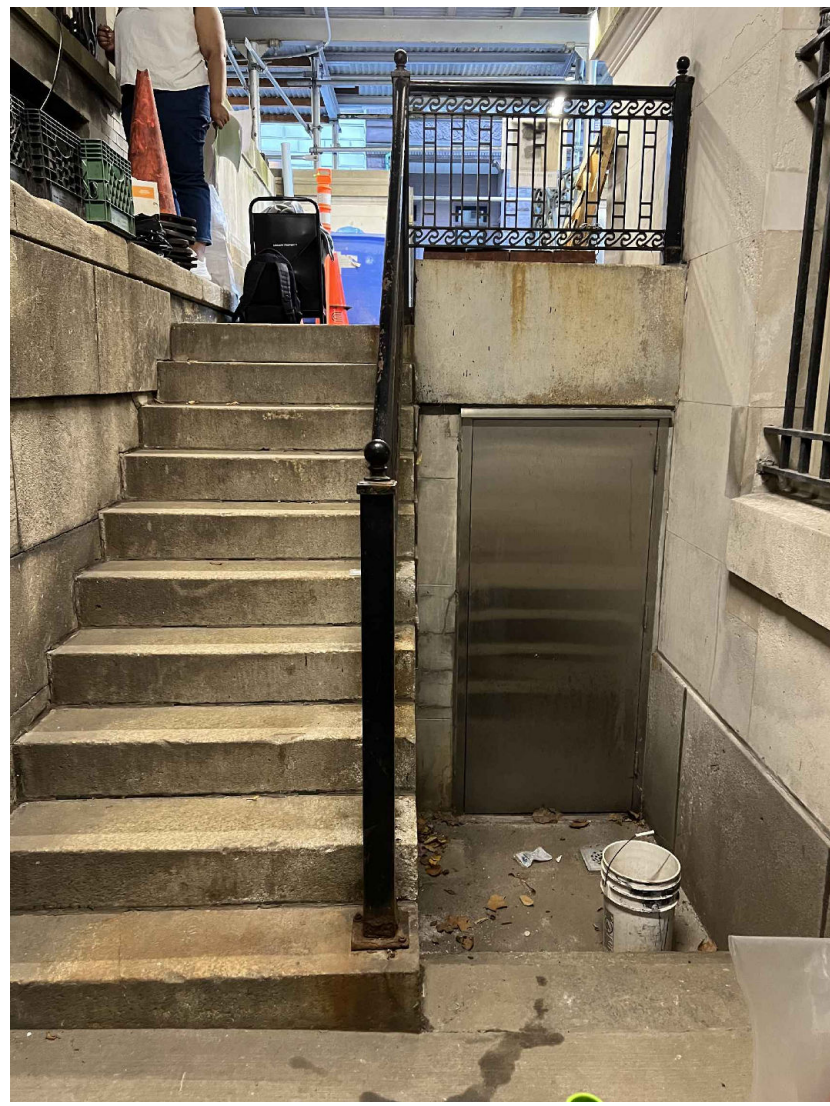
34 EXISTING NORTHERN VIEW FROM FRONT OF 3 E. 78TH ST.  
NTS



33 EXISTING VIEW FROM SIDEWALK  
NTS



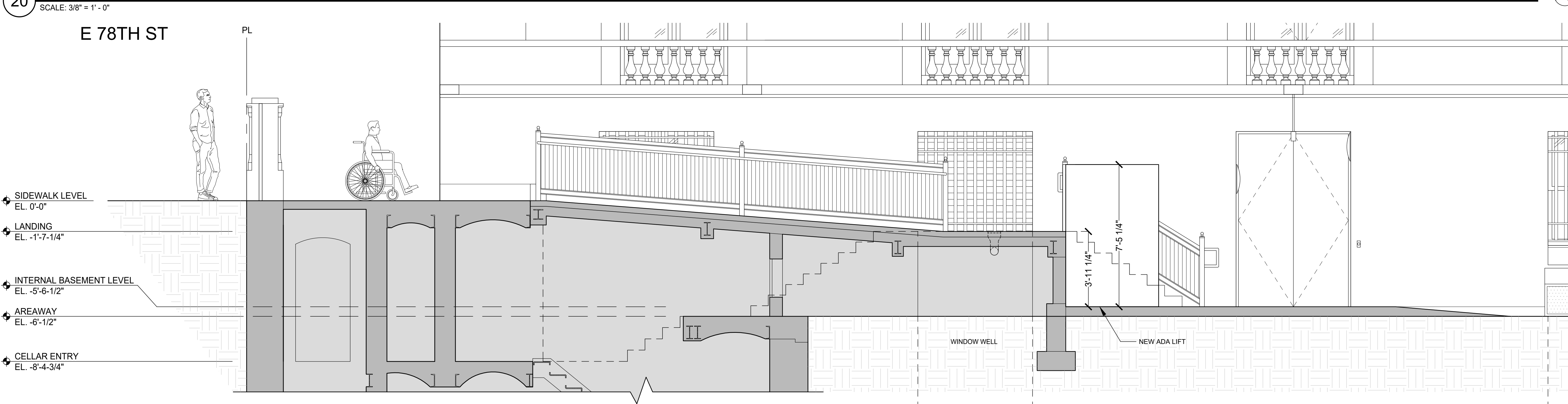
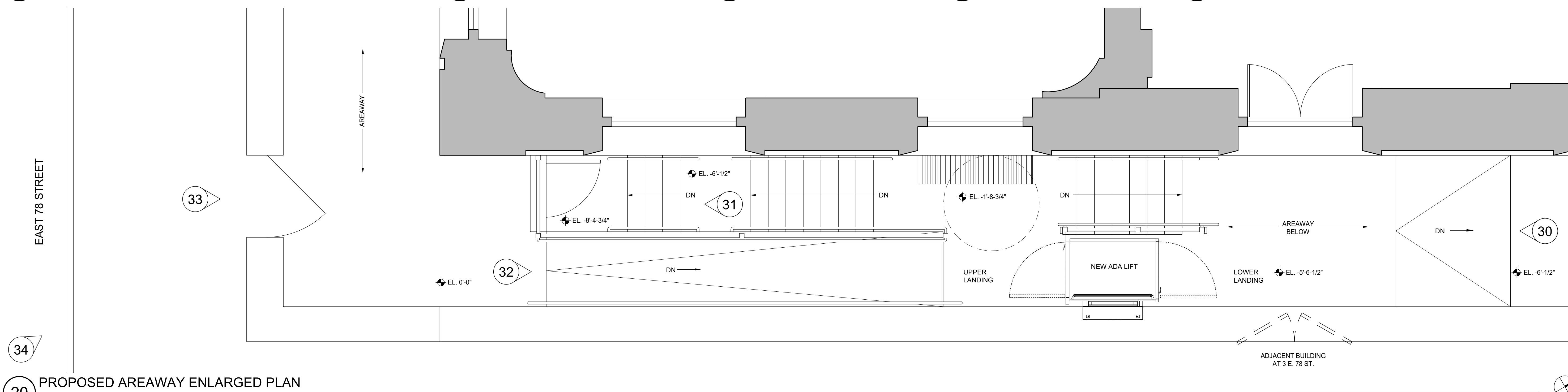
32 EXISTING STAIR  
NTS



31 EXISTING STAIR  
NTS



30 EXISTING AREAWAY  
NTS



10 PROPOSED ENLARGED WEST SECTION/ELEVATION AT EAST AREAWAY  
SCALE: 3/8" = 1' - 0"

revision	date
10	
9	
8	
7	
6	
5	
4	
3	COMMUNITY BOARD 8 PRESENTATION 12.09.24
2	100% DD/LPC SUBMISSION 10.28.24
1	50% DESIGN DEVELOPMENT 12.22.23

**PROPOSED ENLARGED  
1ST FL PLAN & SECTION**

project number	2201A
date	12.09.24
scale	AS NOTED





**East 78th Street**

ew York, NY 10075

MAD

## & Design

244 5th Ave, 5th Floor  
New York, NY 10001

T. 212 982 4613

.MAD-NYC.com

**structural engineer**

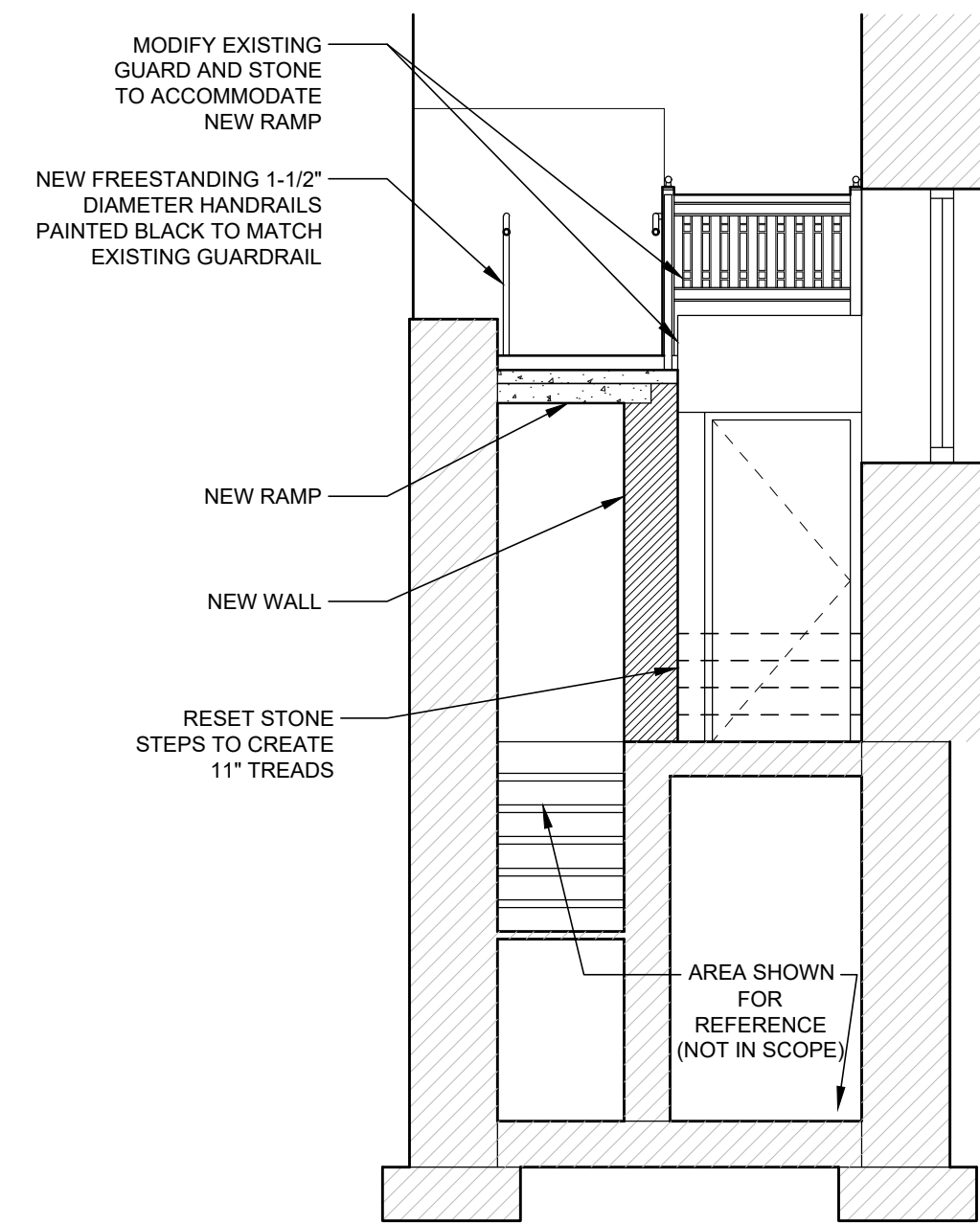
## ERSTRUCTURES

ENGINEERS + ARCHITECTS

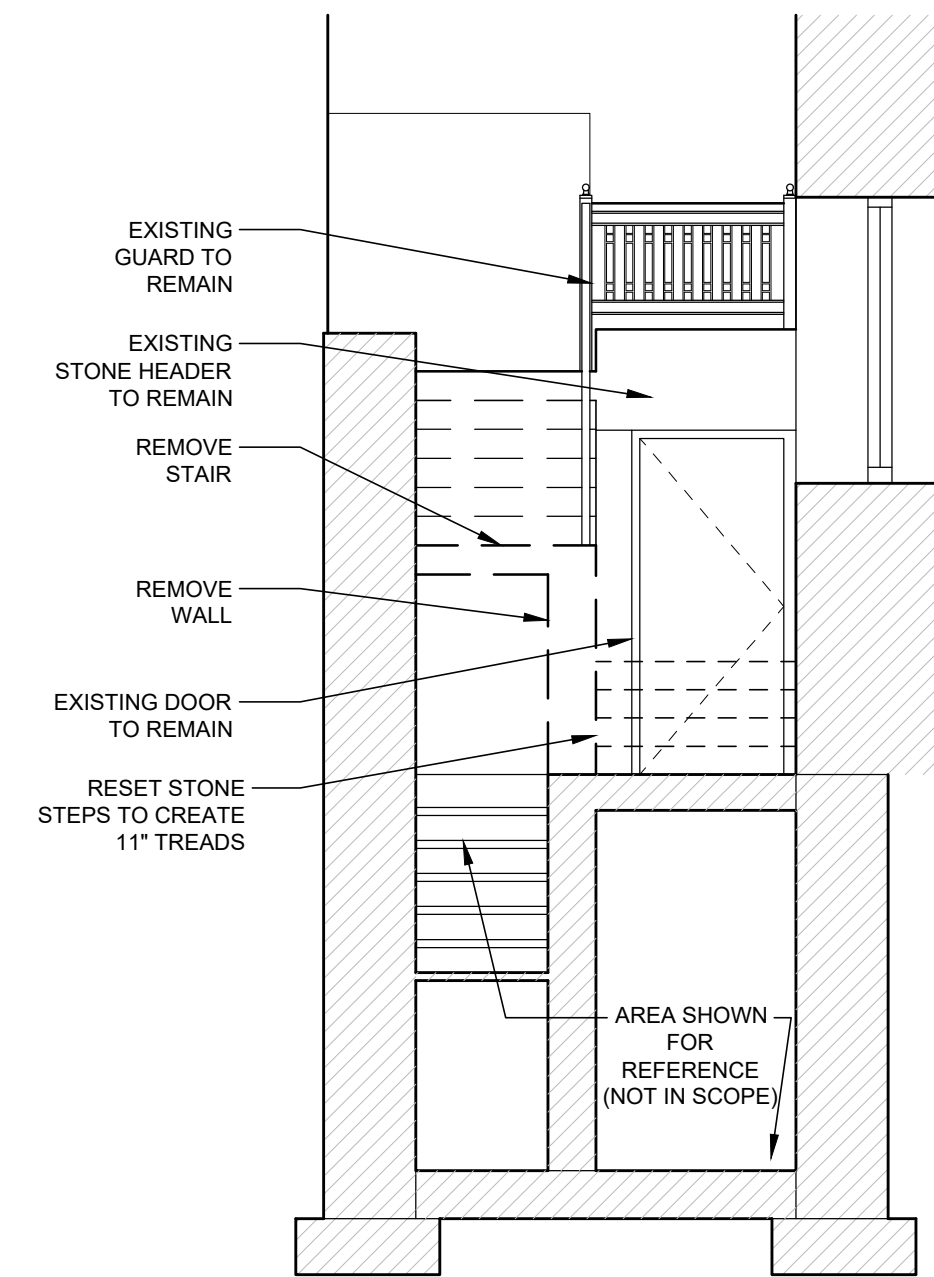
New York, NY 10013

T. 212 505 1133  
STRUCTURES

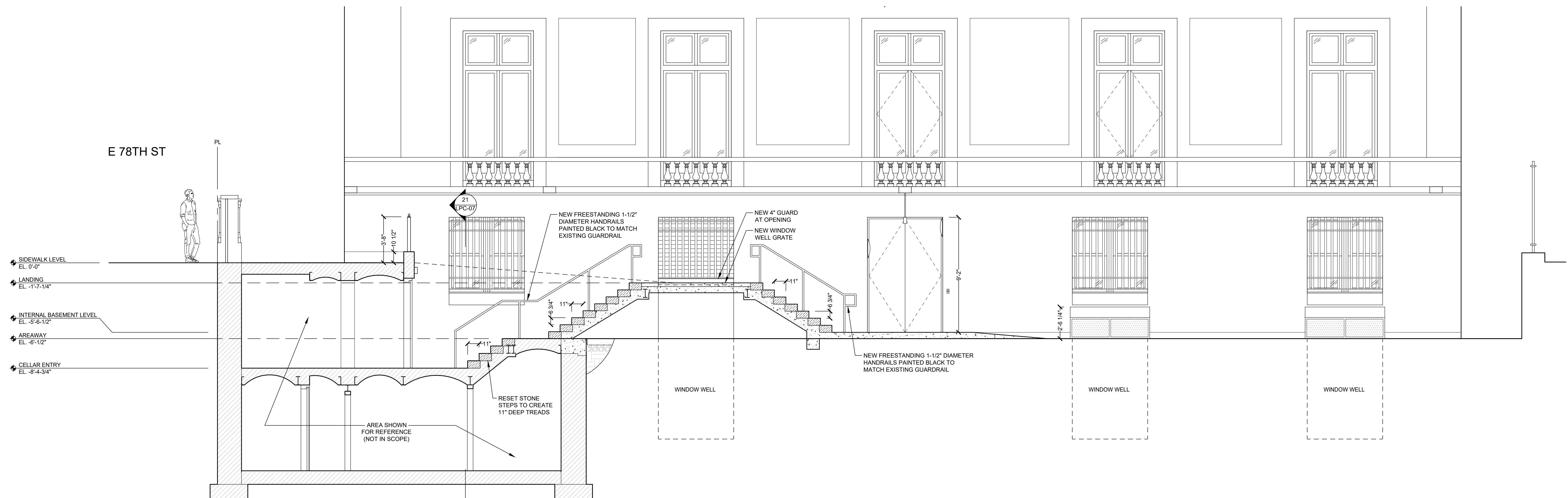
LECTURES.COM



21 PROPOSED CROSS SECTION  
SCALE: 1/4" = 1' - 0"



20 EXISTING CROSS SECTION  
SCALE: 1/4" = 1' - 0"



10 PROPOSED WEST SECTION/ELEVATION AT EAST AREAWAY  
SCALE: 1/4" = 1' - 0"

10		
9		
8		
7		
6		
5		
4		
3	COMMUNITY BOARD 8 PRESENTATION	12.09.24
2	100% DD/LPC SUBMISSION	10.28.24
1	50% DESIGN DEVELOPMENT	12.22.23

revision	date
drawing title	

## SECTIONS

<b>project number</b>	2201A
<b>date</b>	12.09.24
<b>scale</b>	AS NOTED

## LPC-07

**MADMADMADMADMADM**





23

EXISTING WINDOW WELL GRATE  
NTS

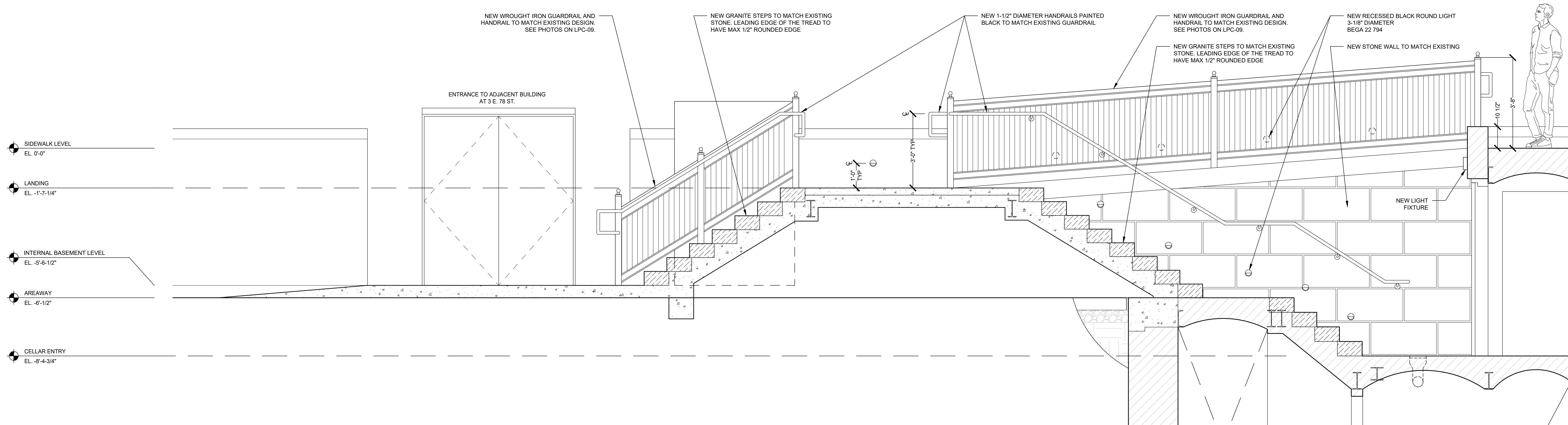
22

EXISTING RAILING & NEWEL POST  
NTS

21

EXISTING RAILING  
NTS

20

EXISTING GUARDRAIL  
NTS

10

PROPOSED EAST SECTION/ELEVATION AT EAST AREAWAY  
SCALE: 1/2" = 1' - 0"

revision	date
10	
9	
8	
7	
6	
5	
4	
3	COMMUNITY BOARD 8 PRESENTATION 12.09.24
2	100% DD/LPC SUBMISSION 10.28.24
1	50% DESIGN DEVELOPMENT 12.22.23

revision	date
10	
9	
8	
7	
6	
5	
4	
3	COMMUNITY BOARD 8 PRESENTATION 12.09.24
2	100% DD/LPC SUBMISSION 10.28.24
1	50% DESIGN DEVELOPMENT 12.22.23

HANDRAIL & GUARDRAIL

project number	2201A
date	12.09.24
scale	AS NOTED





33 EXISTING GUARDRAIL MIDDLE  
NTS



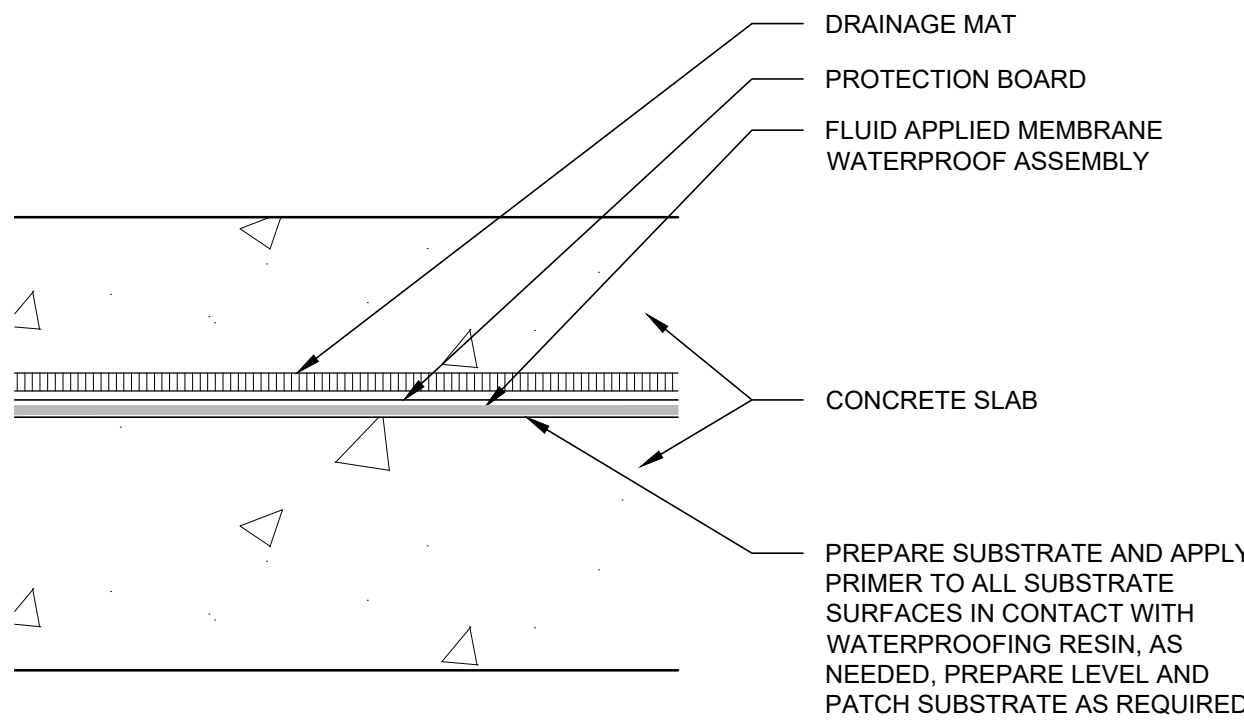
32 EXISTING GUARDRAIL BOTTOM  
NTS



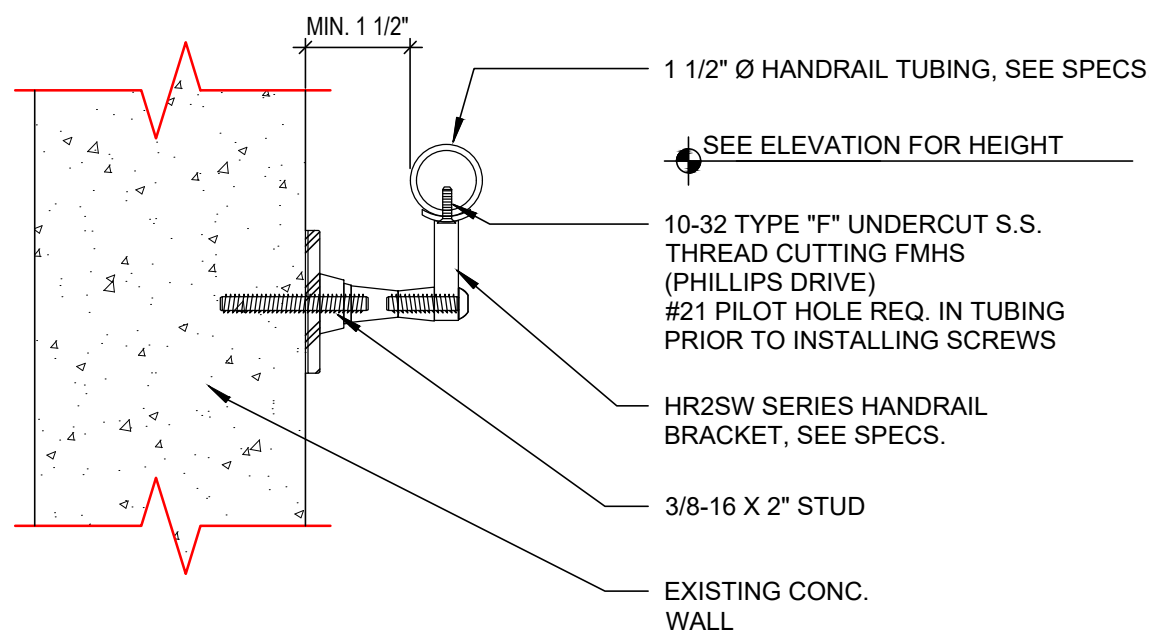
31 EXISTING GUARDRAIL TOP  
NTS



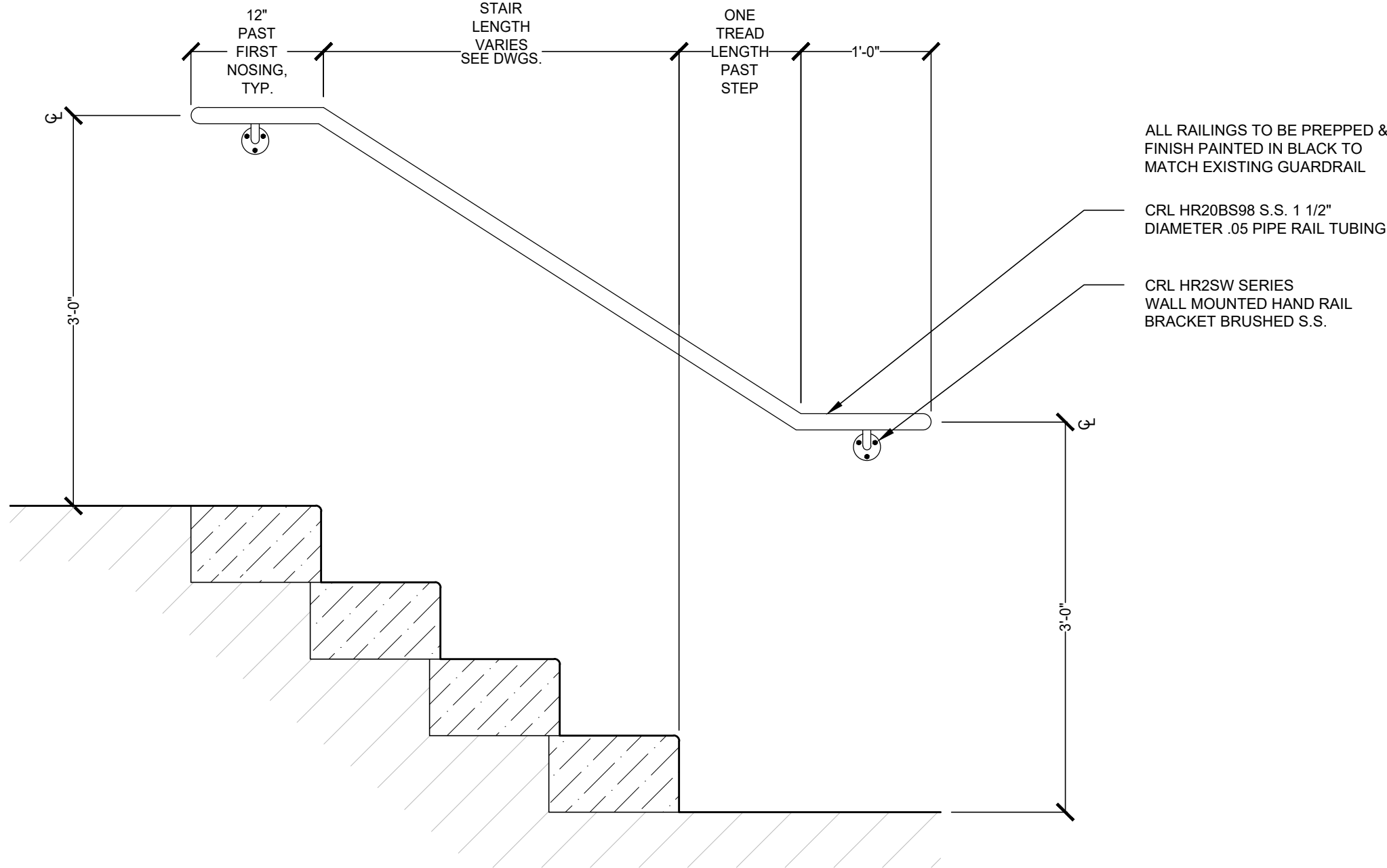
30 EXISTING GUARDRAIL  
NTS



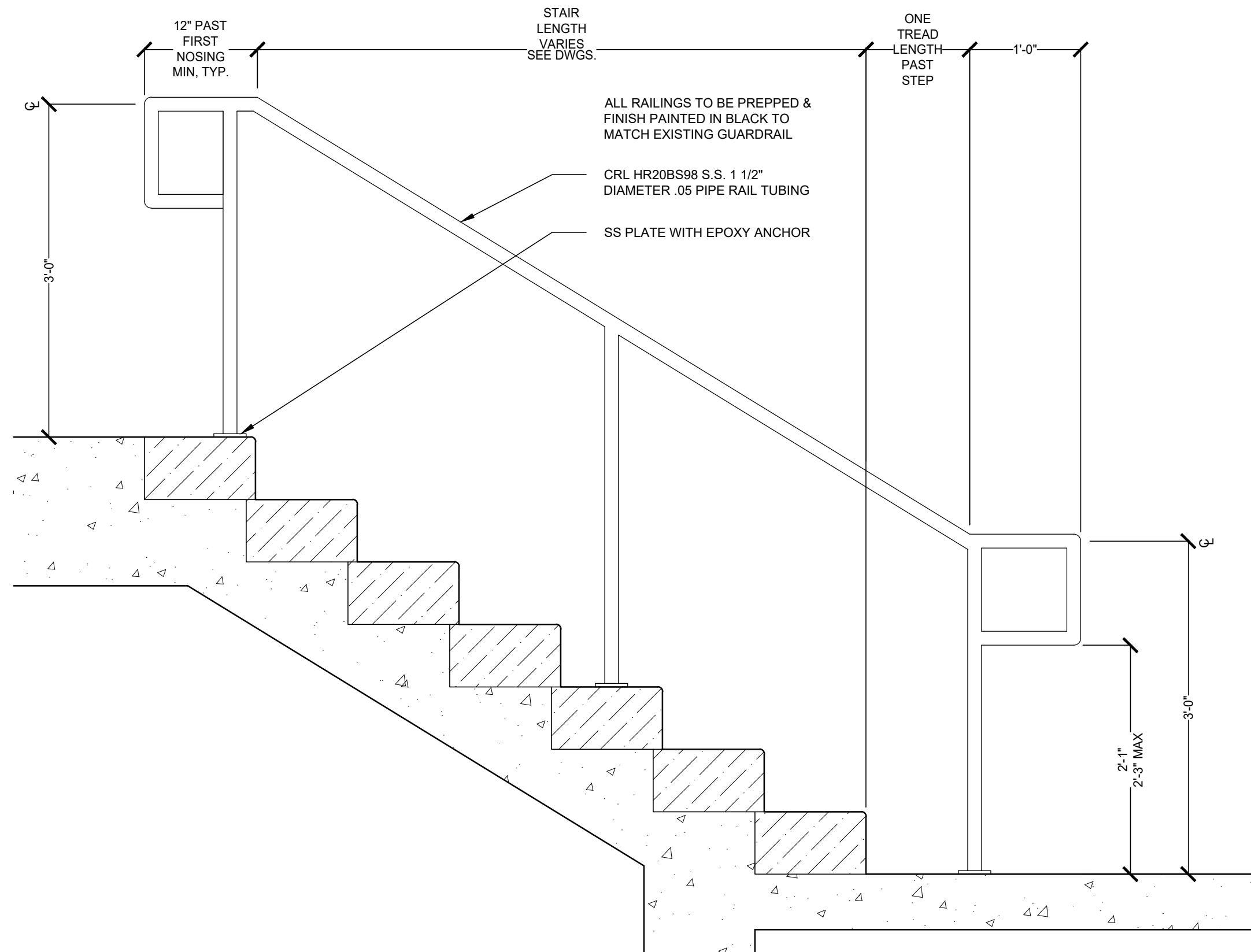
20 TYP WATERPROOFING DETAIL  
SCALE: 3"=1'-0"



12 WALL MOUNTED HANDRAIL SECTION  
SCALE: 3"=1'-0"



11 WALL MOUNTED HANDRAIL DETAIL  
SCALE: 1"=1'-0"



10 FREE STANDING HANDRAIL DETAIL  
SCALE: 1"=1'-0"

revision	date
10	
9	
8	
7	
6	
5	
4	
3	COMMUNITY BOARD 8 PRESENTATION
2	100% DD/LPC SUBMISSION
1	50% DESIGN DEVELOPMENT

revision	date
10	
9	
8	
7	
6	
5	
4	
3	COMMUNITY BOARD 8 PRESENTATION
2	100% DD/LPC SUBMISSION
1	50% DESIGN DEVELOPMENT

PHOTOS & DETAILS

project number	2201A
date	12.09.24
scale	AS NOTED

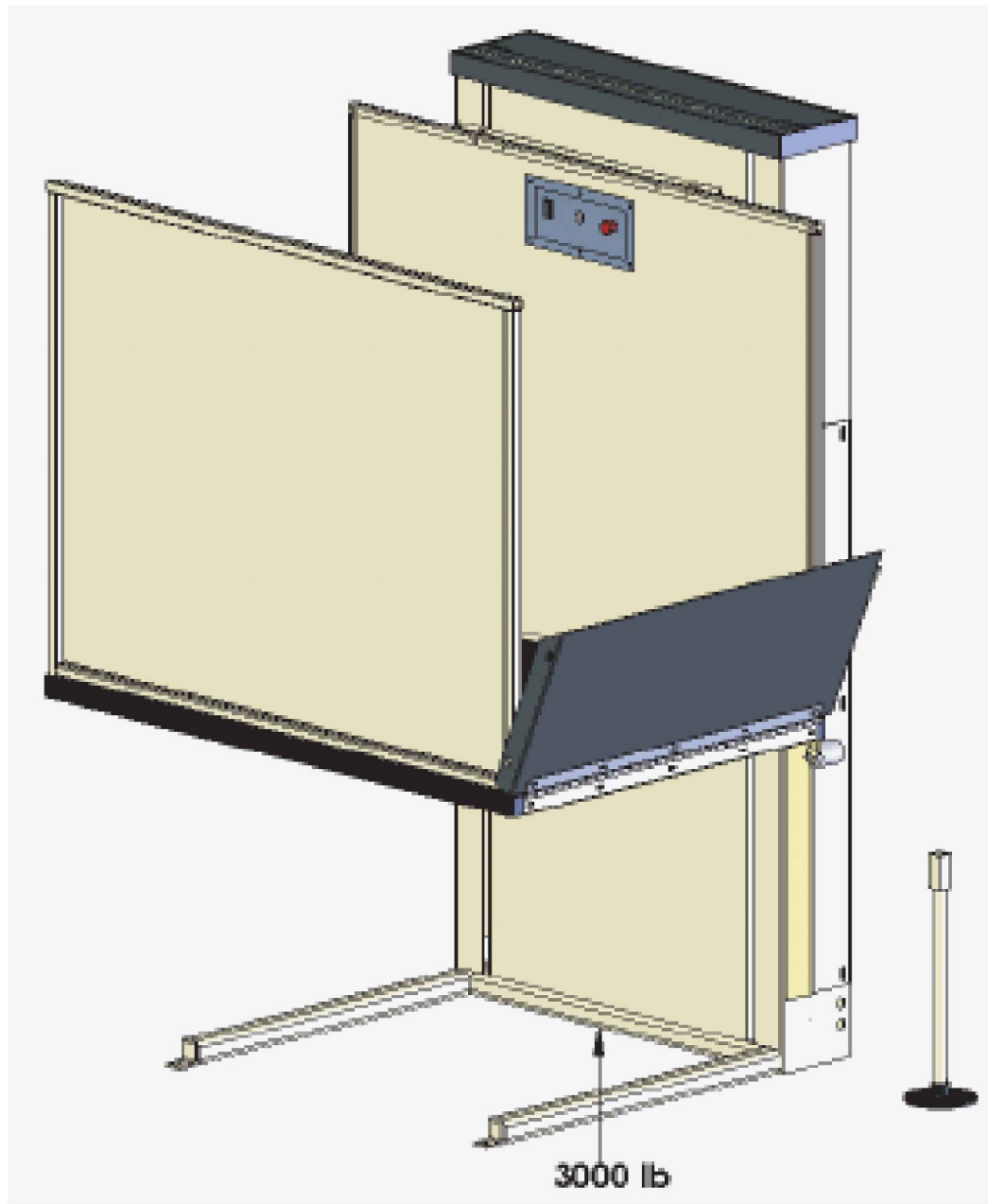


DRIVE TOWER TO BE EMBEDDED IN WALL



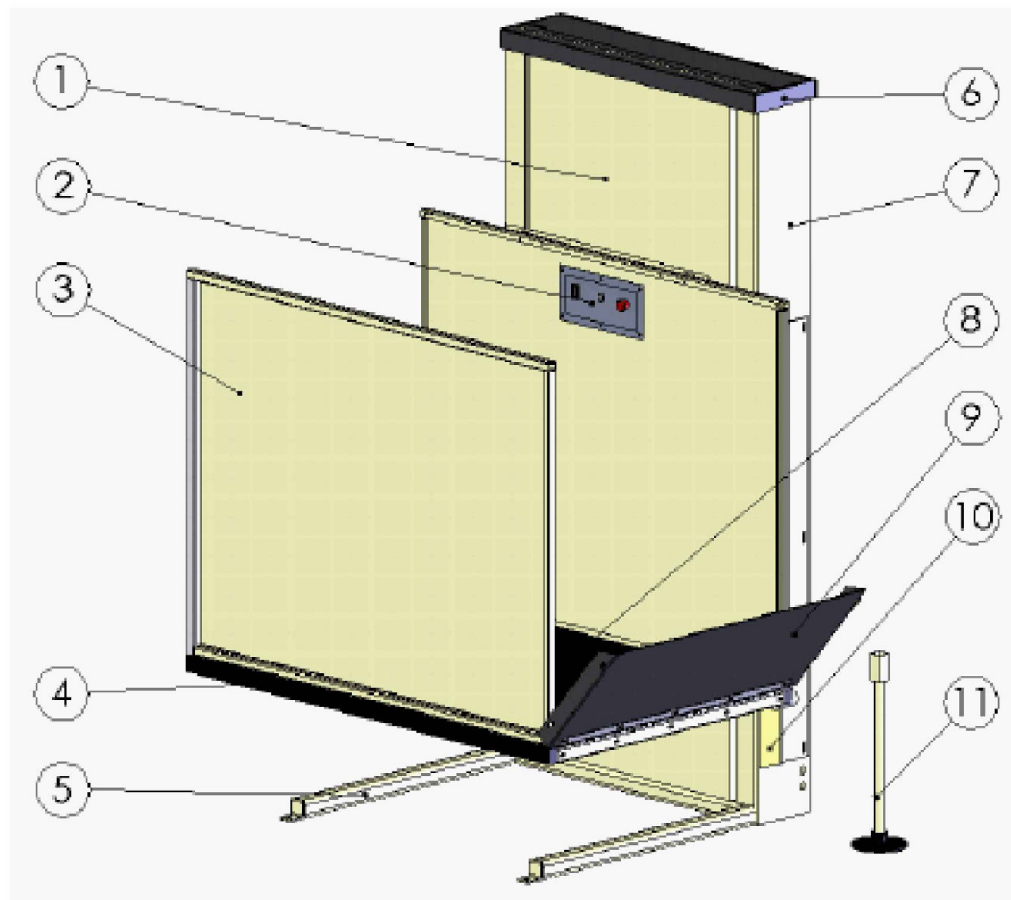
23 UNENCLOSED LIFT FOR REFERENCE  
NTS

Figure 3: Floor loading diagram



22 TYPICAL FLOOR LOADING DIAGRAM  
NTS

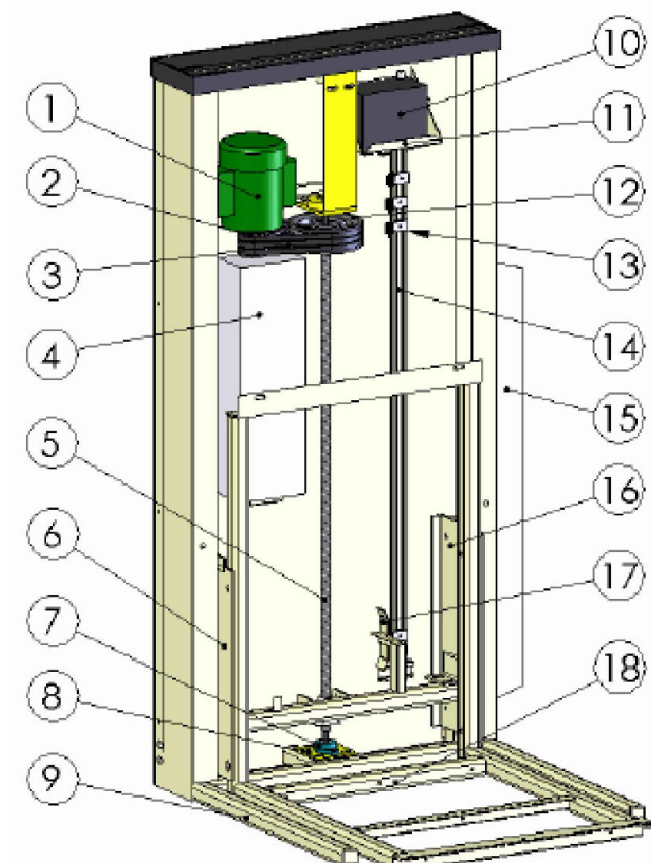
Figure 1: Typical lift, outdoor, unenclosed, no platform gate



Number	Description	Number	Description
1	Front tower panel	7	Tower
2	Car operating panel (C.O.P.)	8	Non-skid platform
3	Side guard panel	9	Automatic access ramp
4	Safety underpan sensors	10	Access ramp channel
5	Self support base	11	Manual lowering device
6	Tower cover	-	-

21 TYPICAL LIFT SPECIFICATIONS  
NTS

Figure 2: Drive tower



Number	Description	Number	Description
1	Motor	10	Battery (optional)
2	Main pulley	11	Battery tray
3	V strap	12	Pulley
4	Controller box	13	Limit switches (may vary)
5	Acme screw	14	Unistrut
6	Left roller guide	15	Access ramp channel
7	Lower bearing	16	Right roller guide
8	Lower bearing plate	17	Cam assembly
9	Self support base	18	Carriage assembly

20 DRIVE TOWER SPECIFICATIONS  
NTS

LIFT TO BE IN PEBBLE GREY FINISH. ACTUAL COLOR MAY VARY RAL 7032



RECESSED BLACK ROUND LIGHT  
3-1/8" DIAMETER  
BEGA 22 794

11 LIGHT SPECIFICATIONS  
NTS

SAVARIA MULTILIFT UNENCLOSED VERTICAL PLATFORM LIFT  
TYPE 2 WITH PLATFORM GATE, UNENCLOSED HOISTWAY, 36" CAB

Multilift specifications	
Applications	Residential (indoor/outdoor); commercial (U.S.A.)
Load capacity	750 lb (340 kg)
Maximum travel distance	48" (1219 mm); optionally 72" (1829 mm)
Levels serviced	2
Travel speed	8 ft/min (0.04 m/s)
Noise level (for typical installation)	65.9 dBA (up direction); 65.0 dBA (down direction) Measured at a height of 1m, distance of 1m, in front of the motor with all panels on
Cab types/sizes	Type 2 (enclosed and unenclosed hoistway): • 34" x 48" (863 mm x 1219 mm) • 34" x 54" (863 mm x 1371 mm) • 34" x 60" (863 mm x 1524 mm) Type 3/4 (enclosed and unenclosed hoistway): • 35" x 47" (889 mm x 1194 mm) • 35" x 53" (889 mm x 1346 mm) • 35" x 59" (889 mm x 1499 mm) Type 2 with platform gate (unenclosed hoistway): • 36" x 48" (914 mm x 1219 mm) • 36" x 54" (914 mm x 1371 mm) • 36" x 60" (914 mm x 1524 mm) Type 3/4 with platform gate (unenclosed hoistway): • 36" x 47" (914 mm x 1194 mm) • 36" x 53" (914 mm x 1346 mm) • 36" x 59" (914 mm x 1499 mm) All enclosure - Type 2, Type 3, Type 3 with 45" opening, Type 4, Type 4 with 45" opening • 36" x 48" (914 mm x 1219 mm) • 36" x 54" (914 mm x 1371 mm) • 36" x 60" (914 mm x 1524 mm) NOTE that the 42" wide cab units are not self-supporting and need wall mounting.
Side guard panels	42 1/8" (1070 mm) side guard panels on platform
Cab access	Front/rear access - standard (platform Type 2) 90 degree access - optional (platform Type 3 and 4)
Power supply	120 VAC, 15 A, 60 Hz, single phase (must be a dedicated electrical line)
Drive system	Acme screw and back-up nut 1 hp (0.75 Kw) motor, 110 VAC Optional 1 hp, 24-volt battery model available
Control system	Electronic-free relay logic controller
Finish	Beige electrostatic powder coat paint on all steel surfaces and vacuum-formed plastics
Features	Call/send stations at landings Continuous-pressure type buttons Operating control buttons on platform Emergency manual lowering/raising device Low-voltage controls Underpan sensors Non-skid platform surface Automatic access ramp (16"); field reversible to suit installation needs Emergency stop button

10 LIFT SPECIFICATIONS  
NTS

10		
9		
8		
7		
6		
5		
4		
3	COMMUNITY BOARD 8 PRESENTATION	12.09.24
2	100% DD/LPC SUBMISSION	10.28.24
1	50% DESIGN DEVELOPMENT	12.22.23

revision date  
drawing title

LIFT SPECIFICATIONS

project number

2201A

date

12.09.24

scale

AS NOTED