



**NYC Parks**

# **The East River Esplanade**

Located on the East River between East 62nd Street and East 125th Street  
In the borough of Manhattan

July 13, 2017

William Castro, Manhattan Parks Borough Commissioner  
Allaire O'Connor, Gabrielle Czernik, PE  
Parks Capital Design

# Presentation Outline

- Brief Overview
- Phase I status
- E107th St Pier
- Phase II status
- E 88-90 Construction



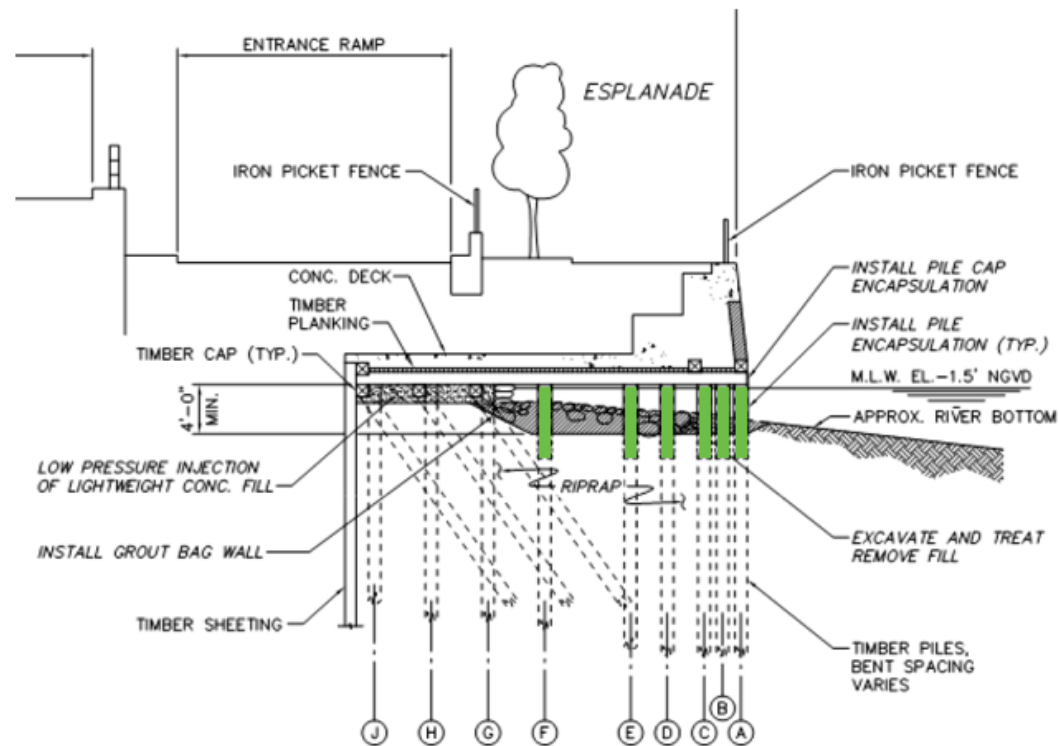
# Presentation Outline

- [Brief Overview](#)
- Phase I status
- E107th St Pier
- Phase II status
- E 88-90 Construction
- 



## Elemental Repairs

Repair and/or replace individual elements of a structure (e.g., encapsulation of timber piles)



Representative cross section  
(details vary according to location)

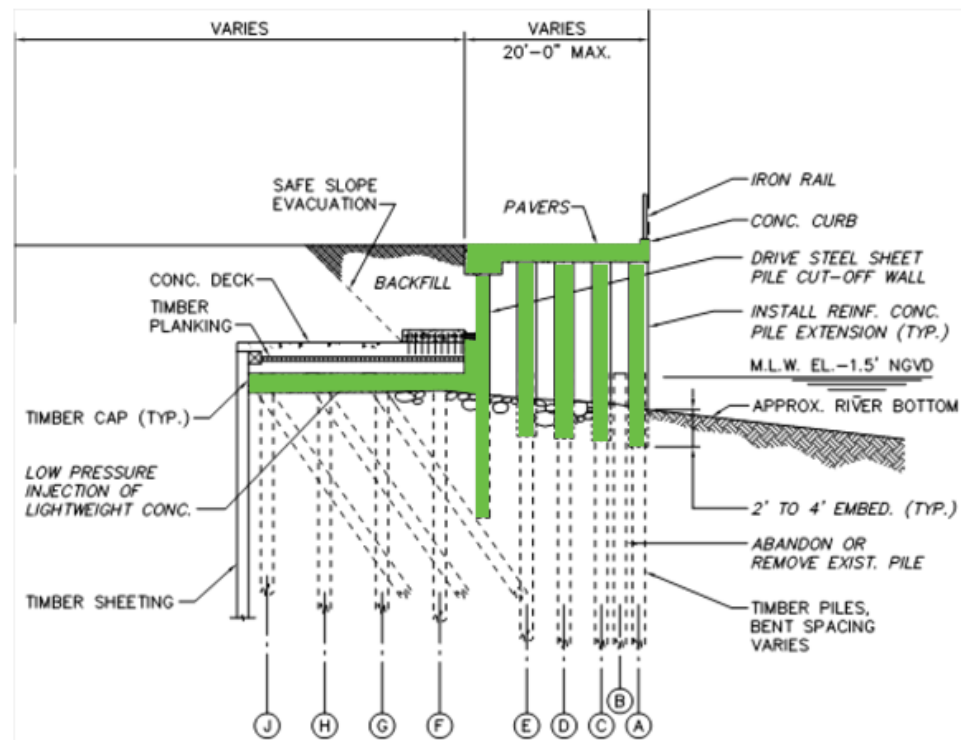


East River Esplanade  
Phase I Update

Brief Overview  
Prescoping Study Recommendations

## Partial Reconstruction

Partially demolish platform; install fill under remaining platform; extend or replace timber piles with concrete piles

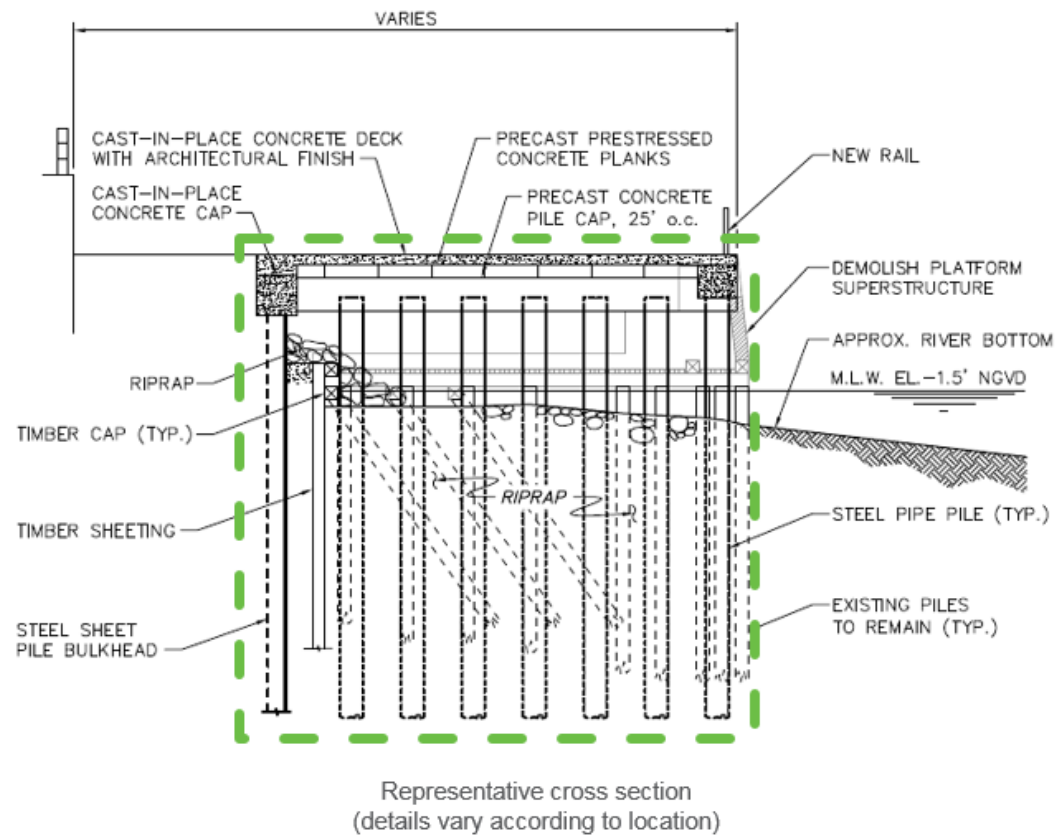


East River Esplanade  
Phase I Update

Brief Overview  
Prescoping Study Recommendations

## Complete Reconstruction

Demolition of existing platform; replace with new high level platform



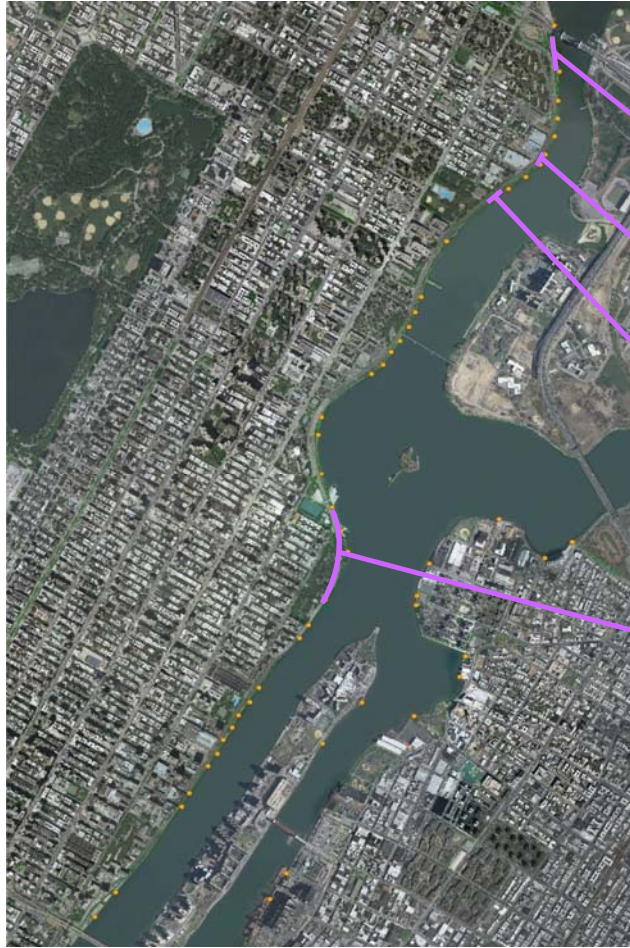
East River Esplanade  
Phase I Update

Brief Overview  
Prescoping Study Recommendations

# Presentation Outline

- Brief Overview
- Phase I status
- E107th St Pier
- Phase II status
- E 88-90 Construction





## Phase 1 Status

LOCATION (appx X-street)	SCOPE	LENGTH (ft)	COST (\$M)	DESIGN	CONSTR. (projected)	CURRENT STATUS
124th-125th	topside only (new structure completed)	350	\$0.4	complete	2016-'17	Railing now in fabrication
117 <sup>th</sup> St	pile removal, bulkhead rehab	126	\$0.8	12/16 – 8/17	2017	Acquiring NYSDEC permit
114th	new high platform	119	\$6.5	finalizing	2017	Acquiring NYSDEC permit
88th-90th (Carl Schurz)	rehab gravity wall	640	\$6.2	complete	2017	In construction



East River Esplanade  
Phase I Update

Phase I  
Status



## SURFACE CONDITIONS



4



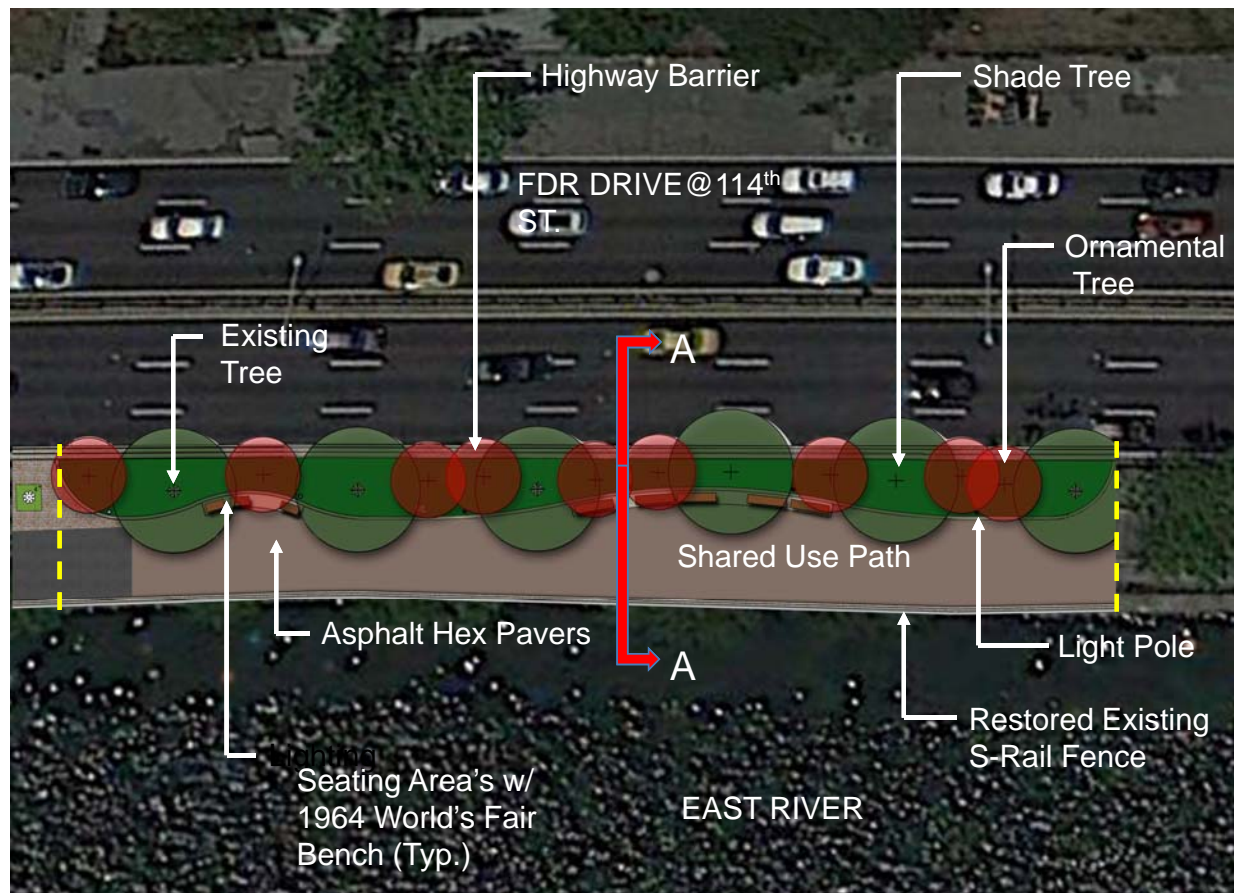
5



East River Esplanade  
Phase I Update

E 114th St.  
Existing Conditions





East River Esplanade  
Phase I Update

E 114th St.  
Schematic Plan – Phase 1

FDR  
Drive



East  
River

New Relieving  
Platform

Failed Timber Cribbing

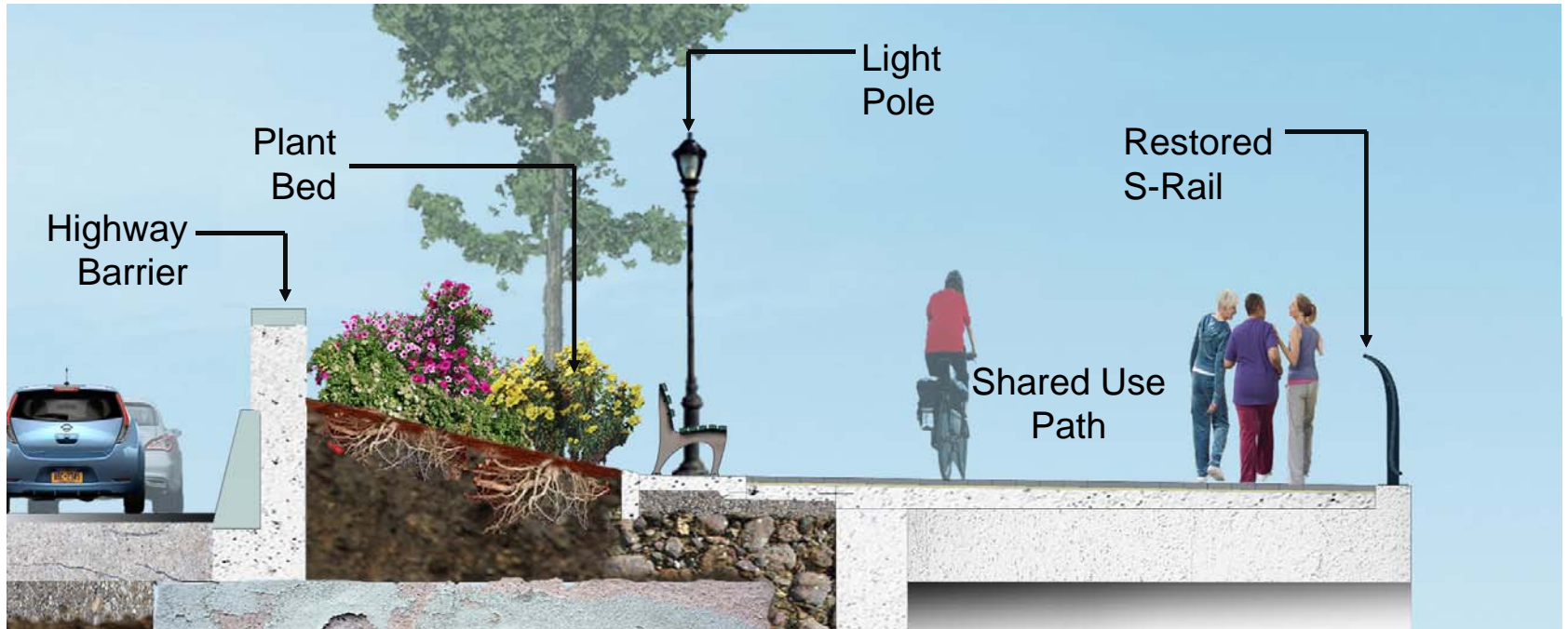
New Structural Piles



East River Esplanade  
Phase I Update

E 114<sup>th</sup> St. – Structural Design  
Section A-A





East River Esplanade  
Phase I Update

E 114<sup>th</sup> St. – Esplanade Design  
Section A-A

# Washburn Wire Co. Pier Collapse (E. 117<sup>th</sup> St.)

- Partial collapse of concrete pier remains, October 2016
- Some damage to bulkhead and esplanade
- Former factory site, only pier remnants and abandoned utilities remain (DCAS jurisdiction)



View from FDR Drive Northbound, pre-collapse



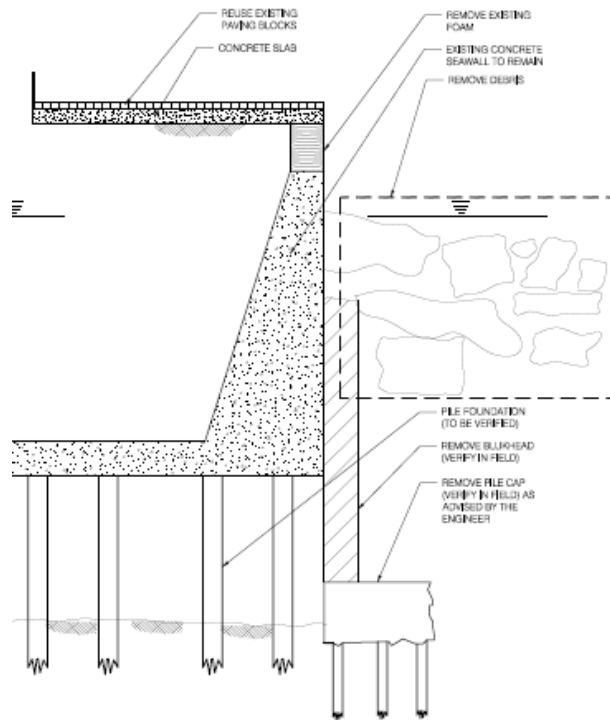
Partial collapse and loss of bulkhead



East River Esplanade  
Phase I Update

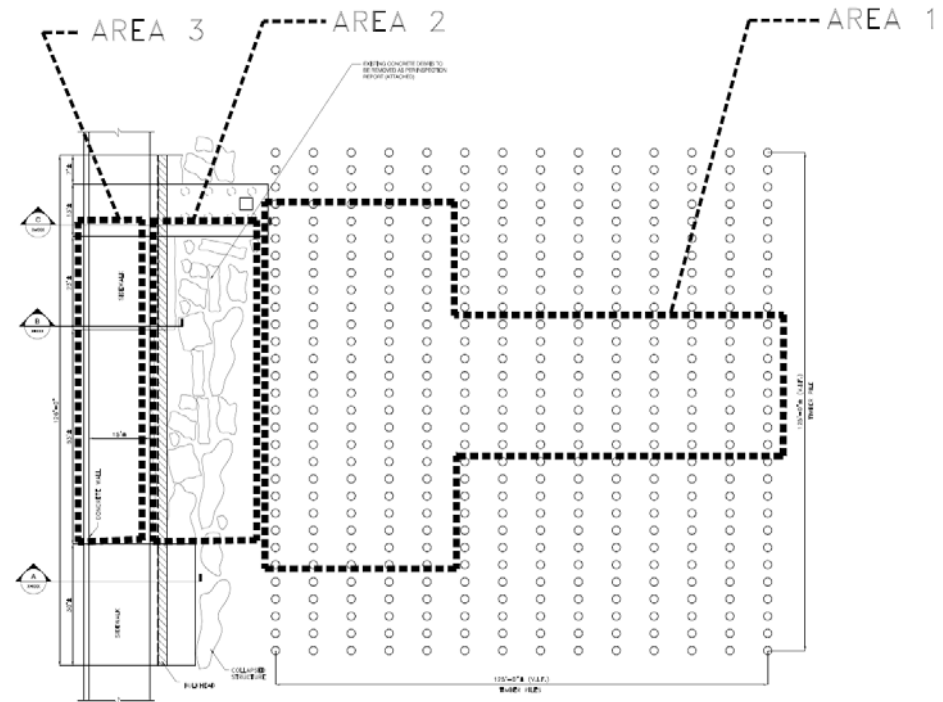
| E 117<sup>th</sup> St.  
| Pier Collapse

# Washburn Wire Co. Pier Collapse (E. 117<sup>th</sup> St.)



SECTION B-B

SCALE: NTS



## DEMOLITION PLAN

$$(CAL)_i: K_i = m + 140$$


NYC Parks

# East River Esplanade Phase I Update

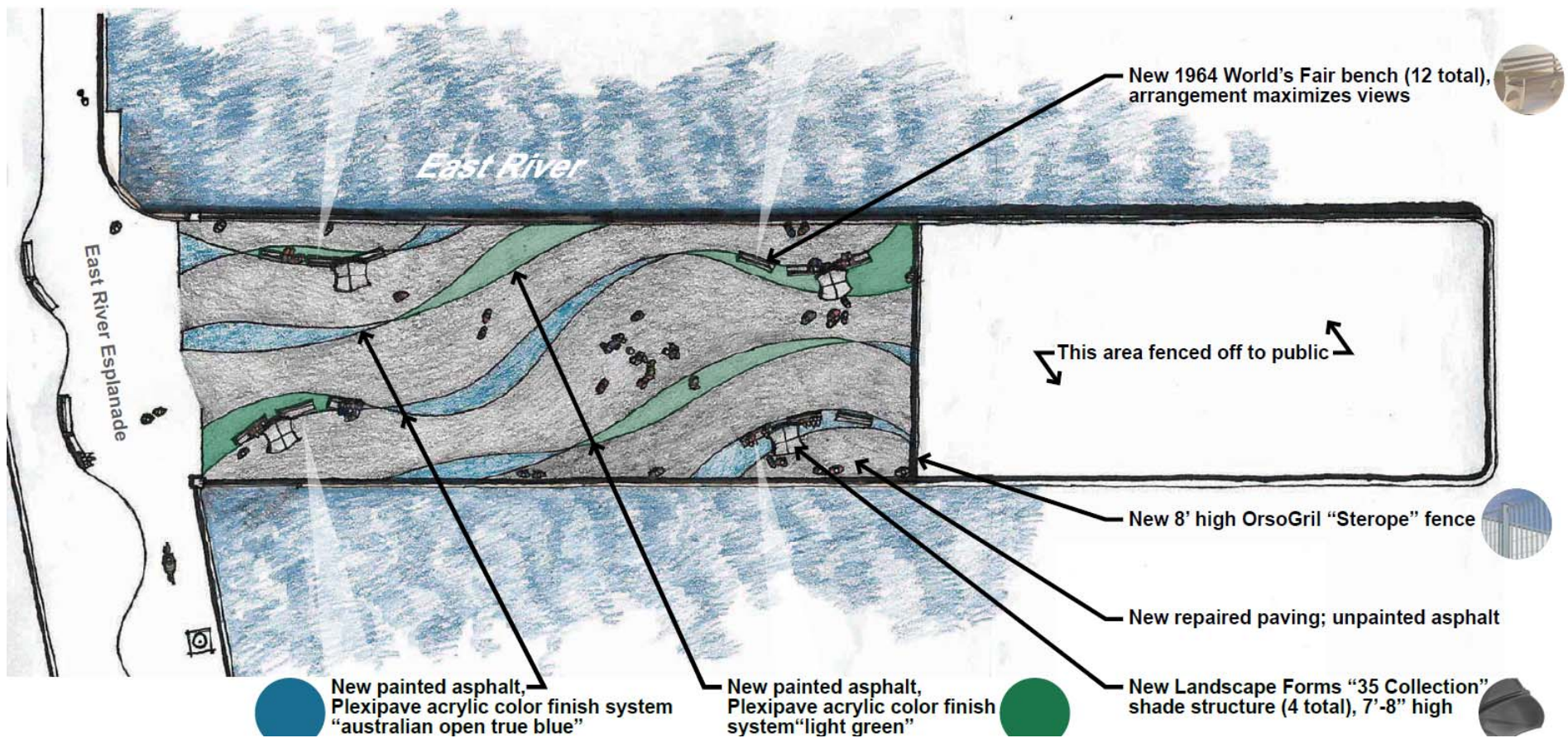
E 117<sup>th</sup> St.  
Pier Collapse

# Presentation Outline

- Brief Overview
- Phase I status
- E107th St Pier
- Phase II status
- E 88-90 Construction







East River Esplanade  
Phase I Update

E 107<sup>th</sup> St. Pier  
Plan Concept Sketch



# Presentation Outline

- Brief Overview
- Phase I status
- E107th St Pier
- Phase II status
- Summary



## ERE PHASE II GOALS

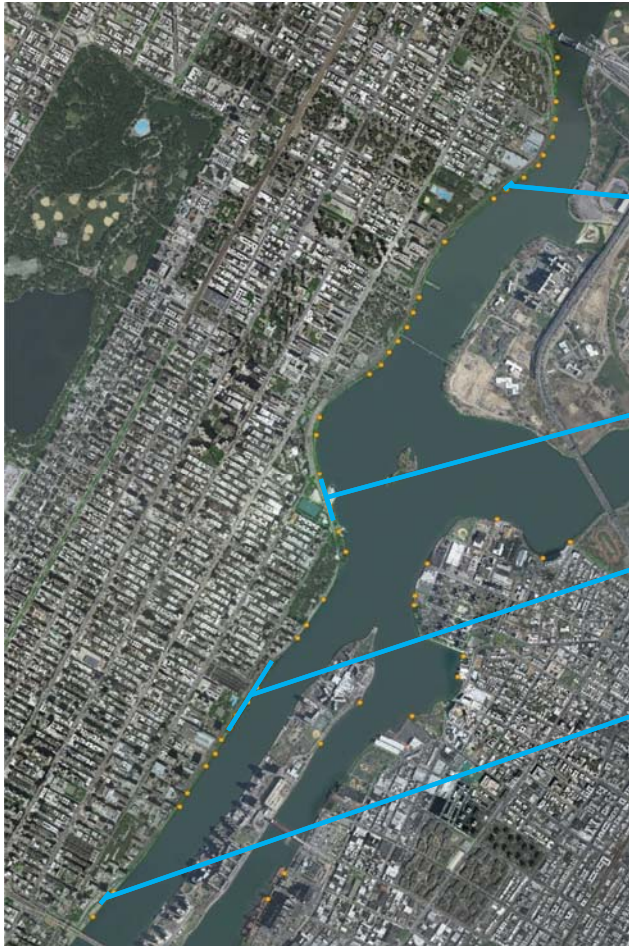
- Re-inspect portions of the East River Esplanade to determine next critical sites for repair
- Repair or replace components based on relative severity and total need
- Replace esplanade pavement, curbs, railings, plantings and lighting above the reconstructed substructures
- Provide separation between slower seating-viewing areas and more active shared use lanes where space permits
- Ensure material and aesthetic consistency with Phase I segments

TOTAL PHASE II BUDGET:        \$26 million



East River Esplanade  
Phase I Update

| Phase II  
| Project Goals



## Phase 2 (Previously Presented)

LOCATION (appx X-street)	SCOPE	LENGTH (ft)	COST (\$M)	DESIGN	CONSTR. (projected)	CURRENT STATUS
115th	rehab low platform	174	\$4.8	3/16 - 12/17	2019-'20	scope tbd, possible replacement [OMB 11 PB 97]
90th-92nd	rehab low platform	689	\$7.4	3/16 - 12/17	2019-'20	Must wait for DDC to finish DSNY transfer station [OMB 3 PB 77-79]
76th - 81st	rehab gravity wall	1362	\$4.6	complete	2019-'20	Moved to Ph2 due to collapse at E117th St [OMB 1 PB 73-75]
62nd - 63rd	rehab low platform	297	\$12.1	3/16 - 12/17	2019-'20	[OMB 1 PB 69.2, 70]



East River Esplanade  
Phase I Update

Phase II  
Previously Presented

## Phase 2 Inspection Findings

LOCATION (appx X-street)	STRUCTURE TYPE	LENGTH (ft)	CONDITION RATING		NOTES
			2013	2017	
116th St	gravity retaining wall	111	FAIR	FAIR	Concrete spalling along front face and top of seawall; efflorescence
115th-116th	low-level relieving platform	228	FAIR	FAIR	Signs of sinkholes forming at topside; 90% deterioration at 4 piles
114th-115th	low-level relieving platform	174	FAIR	TBD	Two sinkholes observed topside; underwater inspection scheduled for 5/12
92nd-94th	low-level relieving platform	441	FAIR	POOR	Accelerating pile deterioration, cause TBD; 24% of piles exhibit >25% section loss
91st-92nd	low-level relieving platform	239	FAIR	TBD	Underwater inspection scheduled for 5/12
90th-91st	low-level relieving platform	450	FAIR	FAIR	Sinkholes in line with expansion joints
62nd-63rd	low-level relieving platform	297	POOR	POOR	26% of piles exhibit >25% section loss



East River Esplanade  
Phase I Update

Phase II  
Findings

# Projected Repair Costs

LOCATION (appx X-street)	STRUCTURE TYPE	CURRENT CONDITION	REPAIR OPTIONS (\$M)				
			Alt 1	Alt 2	Alt 3	Alt 4	Reconstr
116th St	gravity retaining wall	FAIR	-	-	\$1.0	\$1.0	-
115th-116th	low-level relieving platform	FAIR	\$0.6	\$4.1	\$7.8	\$9.9	\$12.0
114th-115th	low-level relieving platform	TBD	TBD	TBD	TBD	TBD	\$10.8*
92nd-94th	low-level relieving platform	POOR	\$8.3	\$9.2	\$13.8	\$15.8	\$30.0
91st-92nd	low-level relieving platform	TBD	TBD	TBD	TBD	TBD	\$17.1*
90th-91st	low-level relieving platform	FAIR	\$1.6	\$4.6	\$9.8	\$11.4	\$33.9
76th-81st	gravity retaining wall	POOR	-	-	\$4.6	\$4.6	-
62nd-63rd	low-level relieving platform	POOR	\$4.6	\$7.2	\$19.5	\$20.6	\$22.4
			Alt 1	Alt 2	Alt 3	Alt 4	Reconstr

These costs are for comparison of options only. Actual repair costs will be determined based on additional analysis and will be finalized after design.



East River Esplanade  
Phase I Update

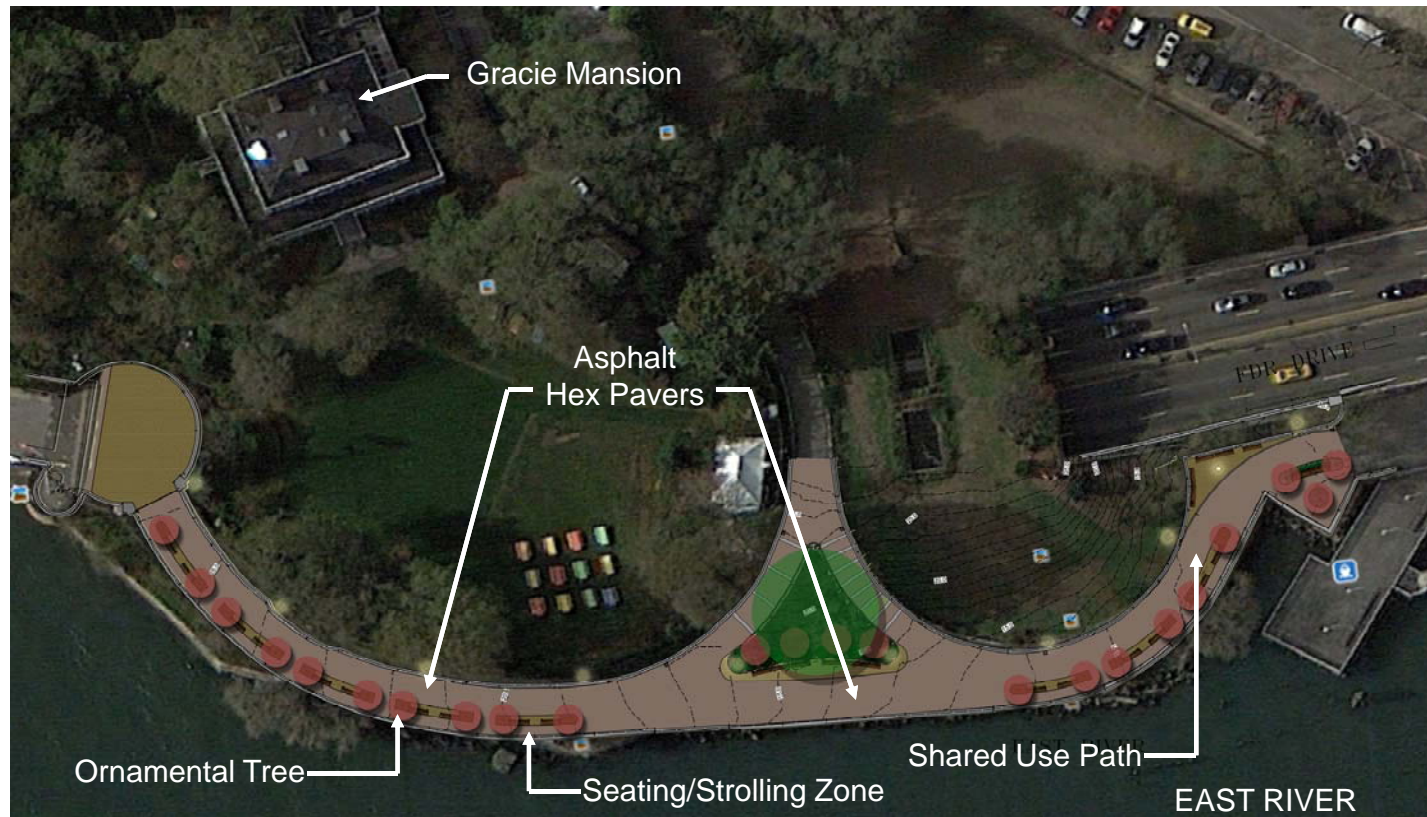
Phase II  
Repair Alternatives

# Presentation Outline

- Brief Overview
- Phase I status
- E107th St Pier
- Phase II status
- E 88-90 Construction

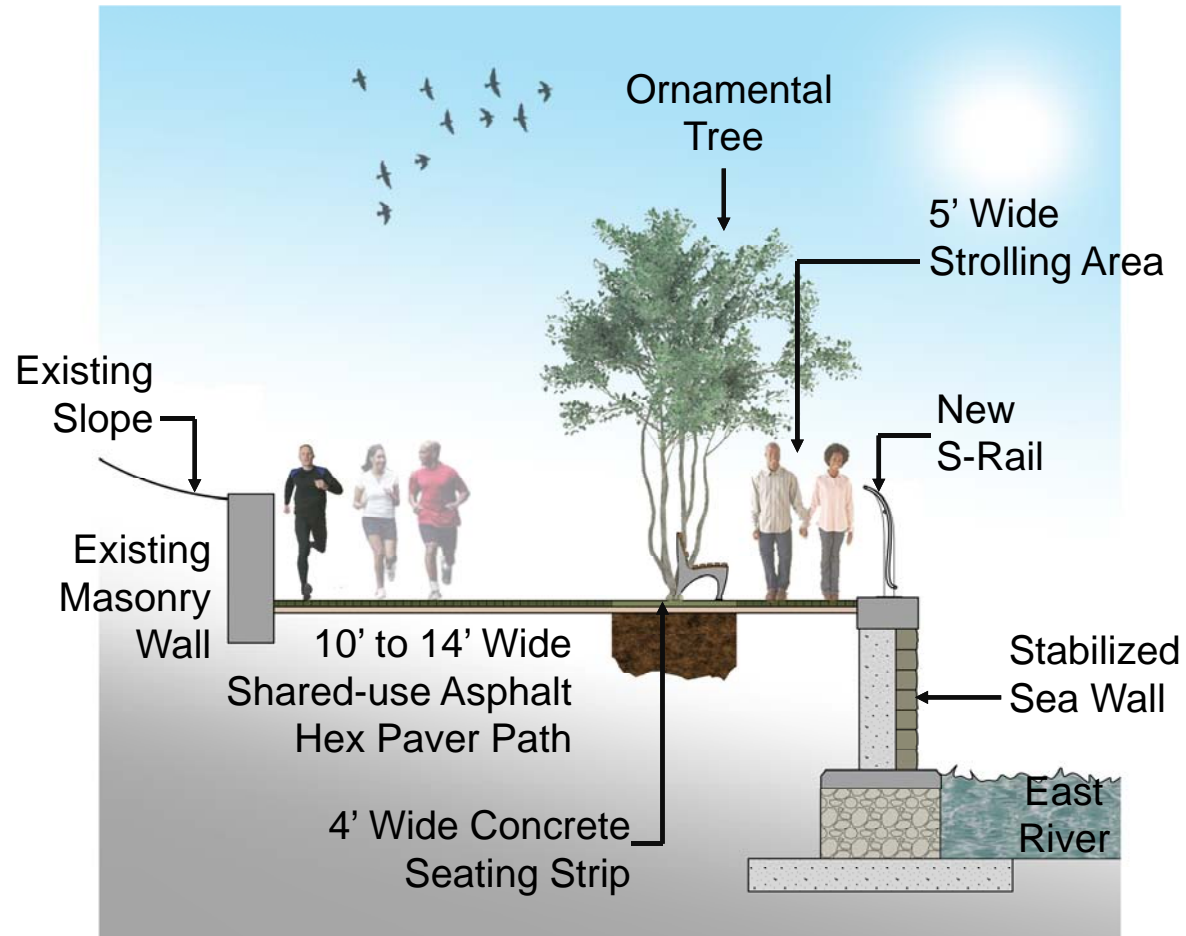






East River Esplanade  
Phase I Update

E 88<sup>th</sup> St. to E 90<sup>th</sup> St. (Carl Schurz Park)  
Schematic Plan



East River Esplanade  
Phase I Update

| E 88<sup>th</sup> St. to E 90<sup>th</sup> St. (Carl Schurz Park)  
| Section View



# PATH BLOCKED AHEAD USE DETOUR



**NO ACCESS OR THROUGH PASSAGE BETWEEN E88<sup>TH</sup> & E96<sup>TH</sup> STREETS**

*Thank you for your patience as we improve your park*



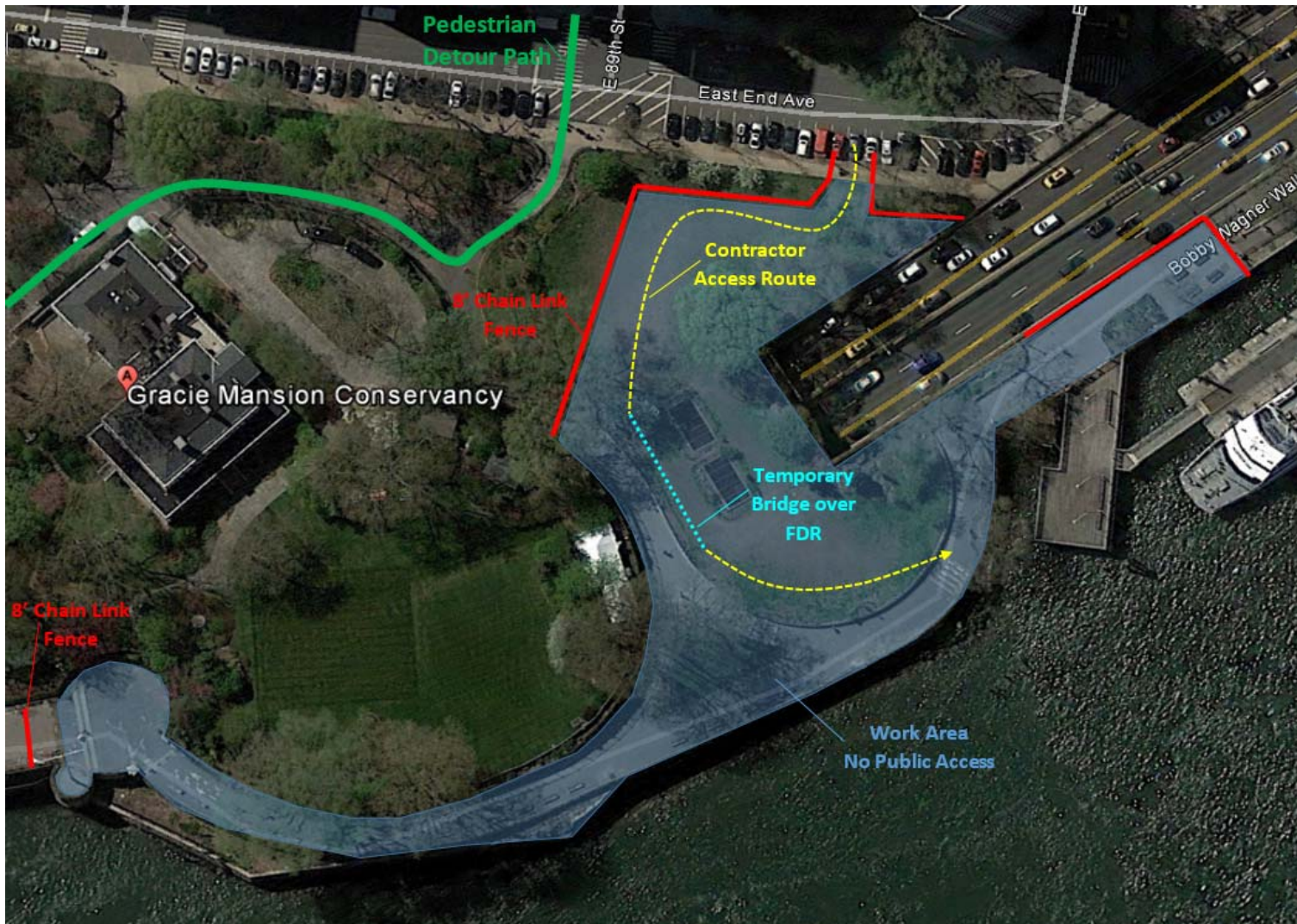
NYC Parks



NYC Parks

East River Esplanade  
Phase I Update

E 88<sup>th</sup> St. to E 90<sup>th</sup> St. (Carl Schurz Park)  
Pedestrian Detour Route



East River Esplanade  
Phase I Update

E 88<sup>th</sup> St. to E 90<sup>th</sup> St. (Carl Schurz Park)  
Construction Plan

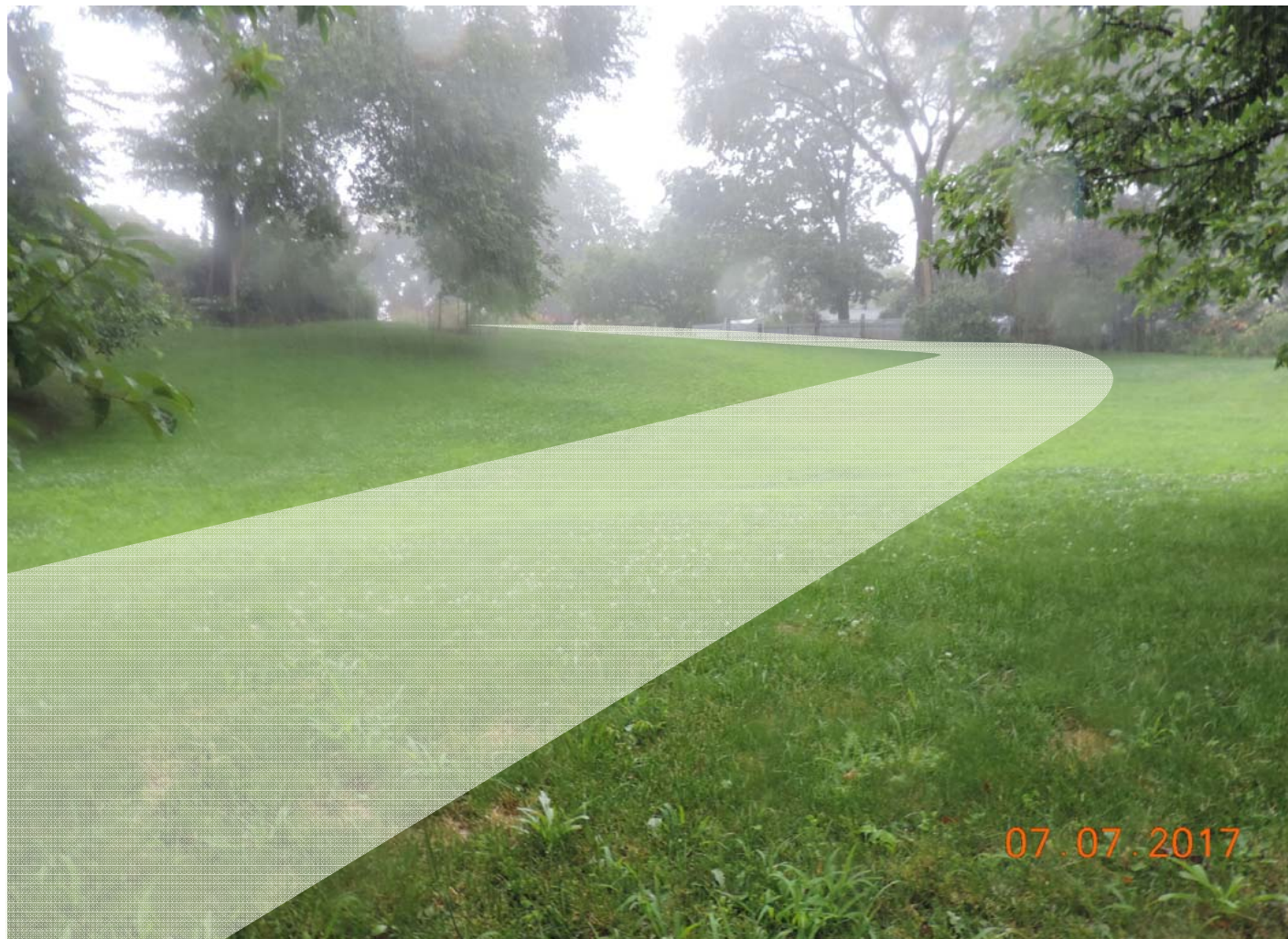


Year	Starting Month	Work Task (Anticipated Starting Month)	Duration (Months)
2017	July Start Date July 10, 2017	Site Preparation	2
		Joint Repair in front of 90th St Ferry Pier	1
	September	Sheeting Installation	2
		Northern Esplanade Excavation	1
		Demolition of Existing Sea Wall	1
	October	Micro Pile Installation	2
	November	Construct New Sea Wall	4
	December	Above Work in Progress	-
2018	January	Backfill Northern Esplanade	1
		Southern Esplanade Excavation	1
		Repair Southern Sea Wall	1
		Backfill Southern Esplanade	1
	February	Utility / Drainage Installation	1
		Install Searail, Benches & Planters	3
		Pavement Restoration	3
	March	Landscaping	1
	April	Above Work in Progress	-
	May	Lawn Reconstruction / Miscellaneous Site Restoration	1



East River Esplanade  
Phase I Update

E 88<sup>th</sup> St. to E 90<sup>th</sup> St. (Carl Schurz Park)  
Construction Schedule



East River Esplanade  
Phase I Update

| E 88<sup>th</sup> St. to E 90<sup>th</sup> St. (Carl Schurz Park)  
| Temporary Access Road

Thank you

Questions?



NYC Parks

East River Esplanade  
Phase I Update

