

THE ROCKEFELLER UNIVERSITY EAST RIVER ESPLANADE

COMMUNITY BOARD 8 SCHEDULE UPDATE

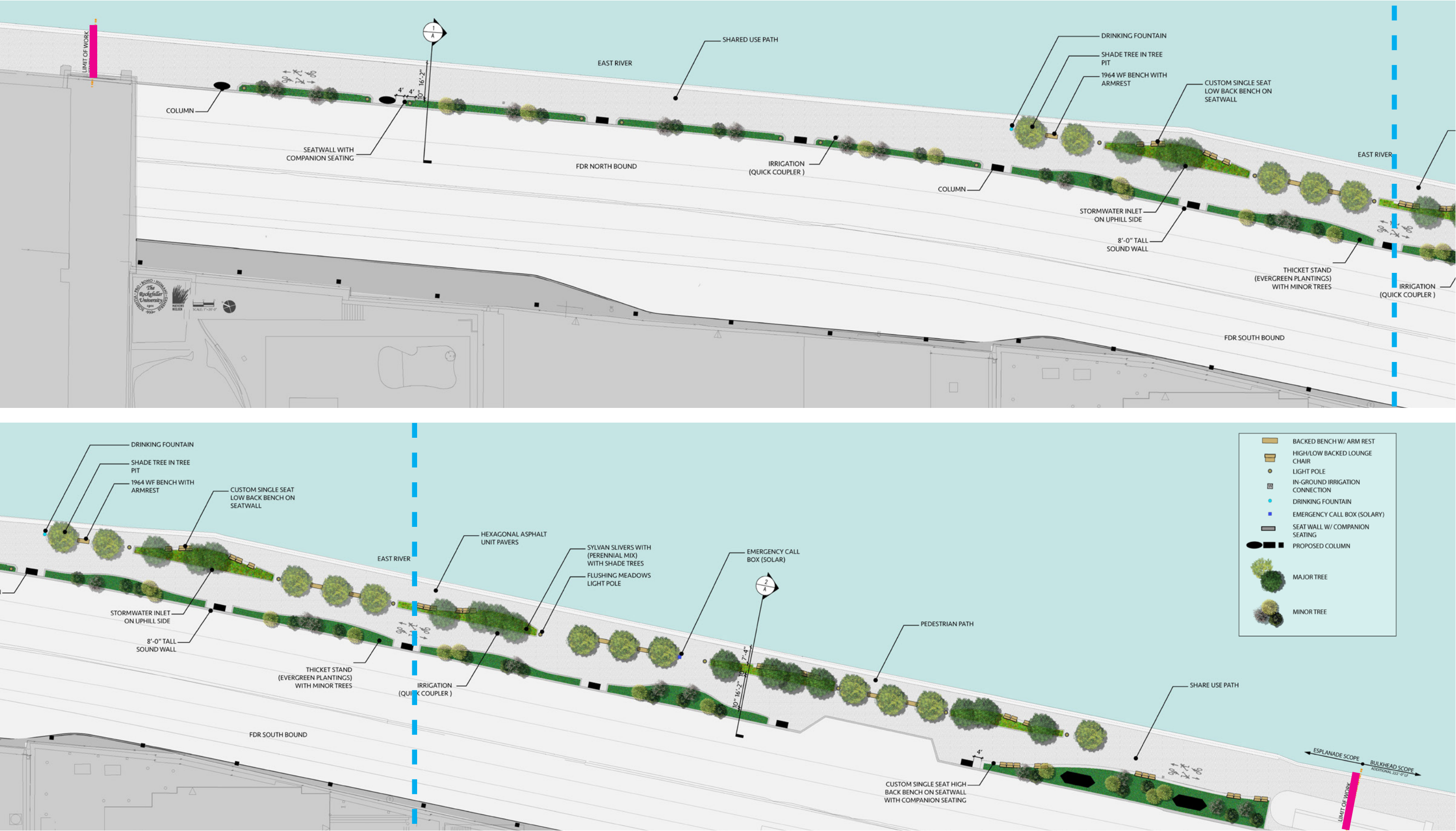
11 MARCH 2015



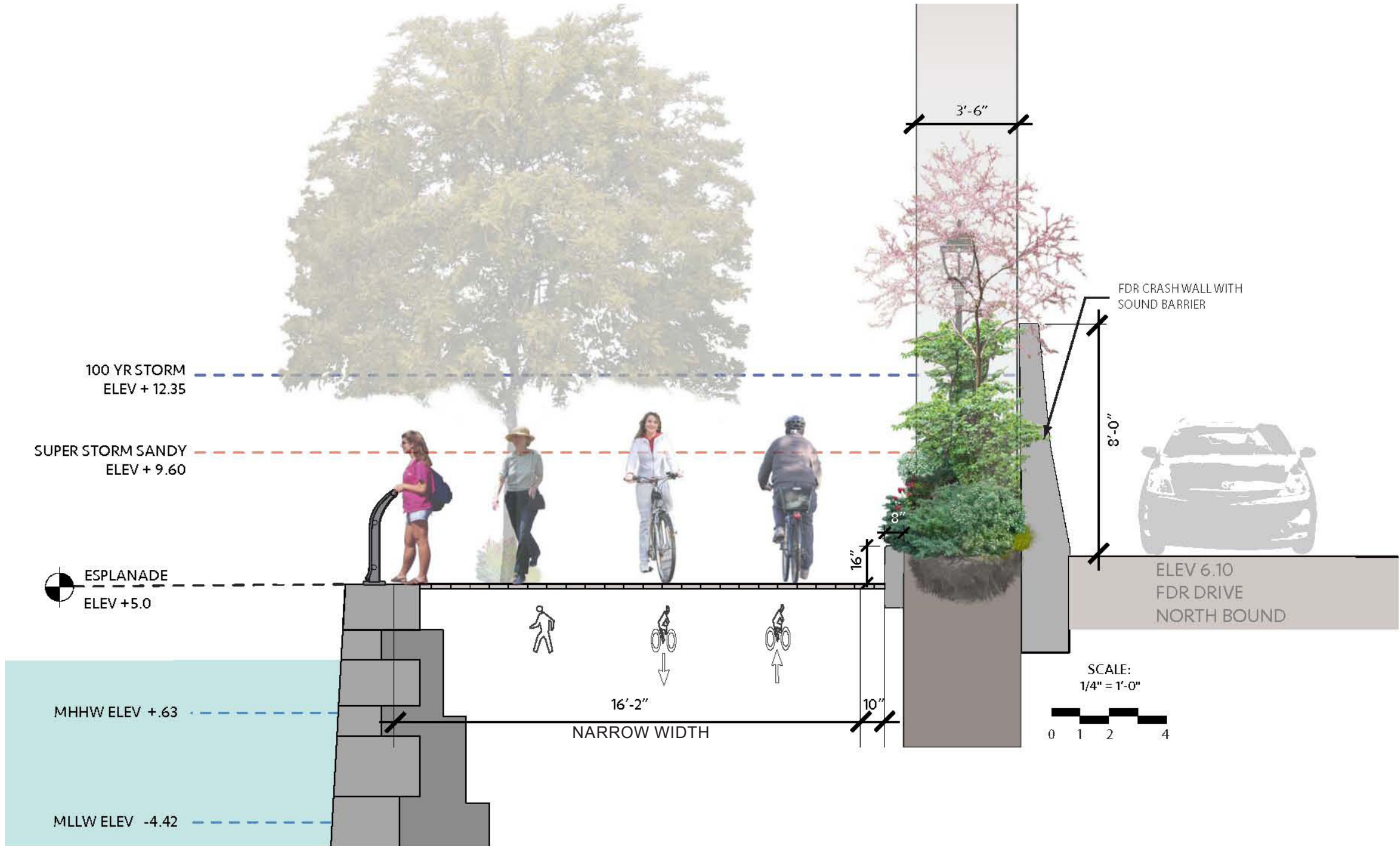
SCIENCE FOR THE BENEFIT OF HUMANITY

RAFAEL VIÑOLY ARCHITECTS

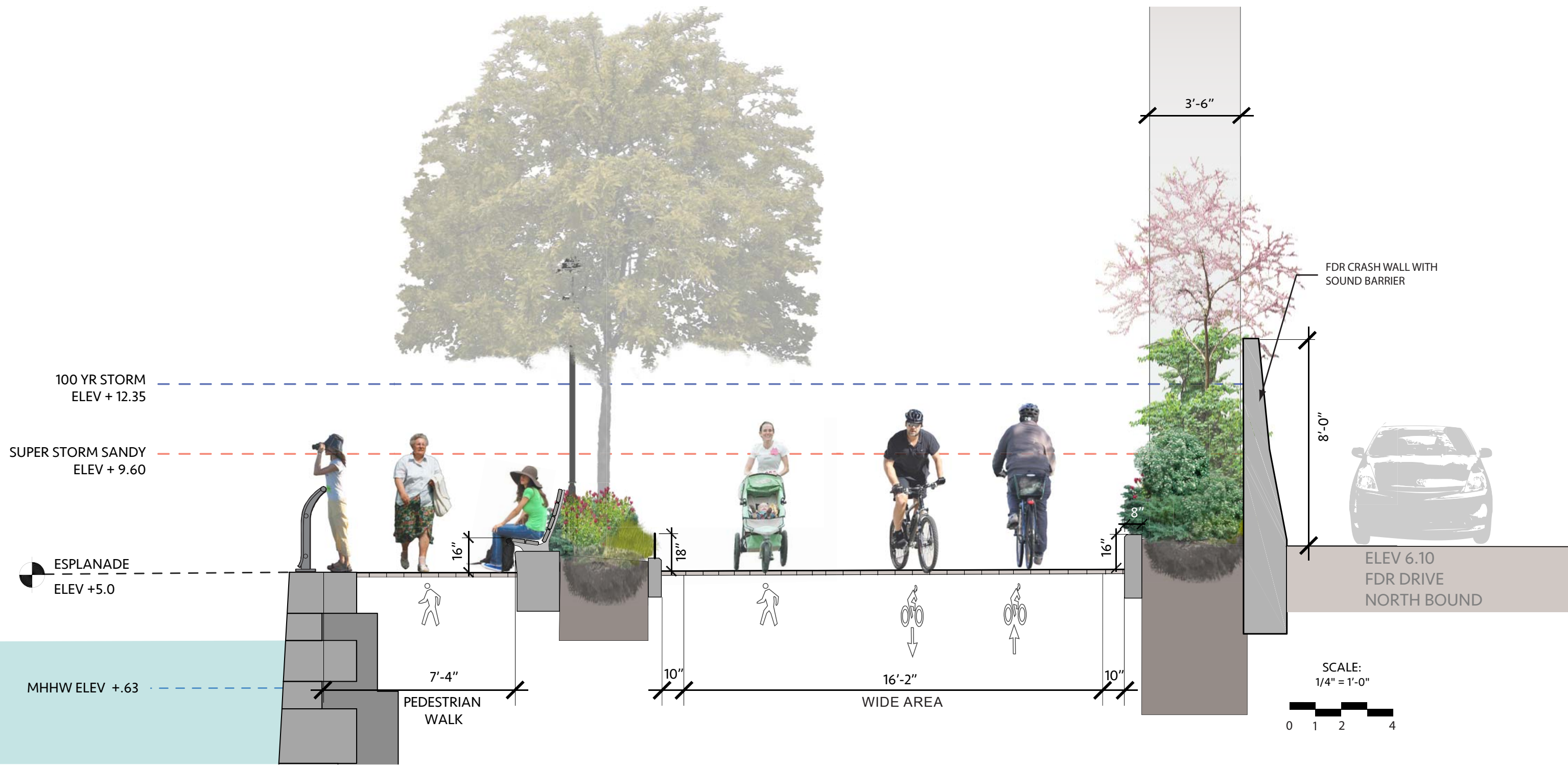
ESPLANADE PLAN



SHARED USE PATH



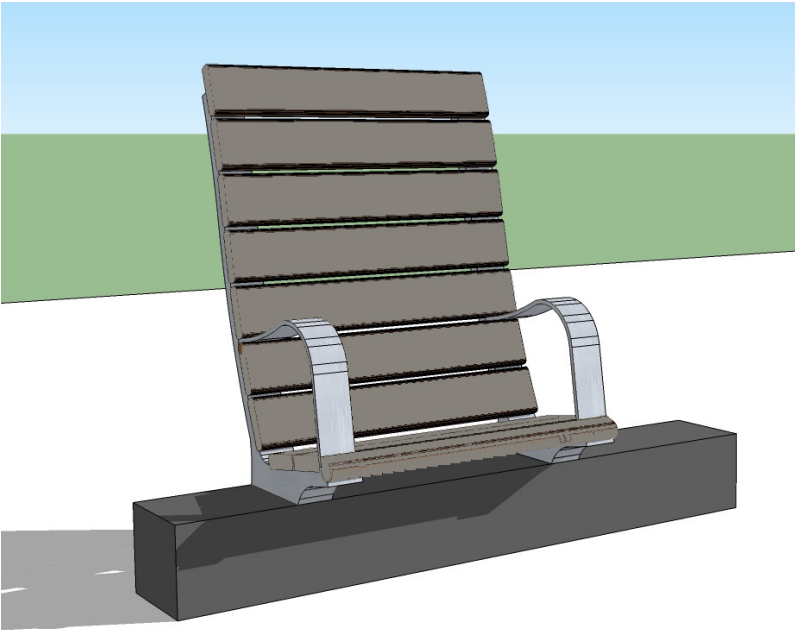
SHARED USE PATH



MATERIALS



1. 1964 WORLDS FAIR BENCH WITH ARMRESTS



2. CUSTOM SINGLE SEAT HIGH BACK AND LOW BENCH



3. BARRIER FREE WATER FOUNTAIN



4. EXISTING BULKHEAD RAILING (REFURBISHED)



5. LOW STAINLESS STEEL RAILING

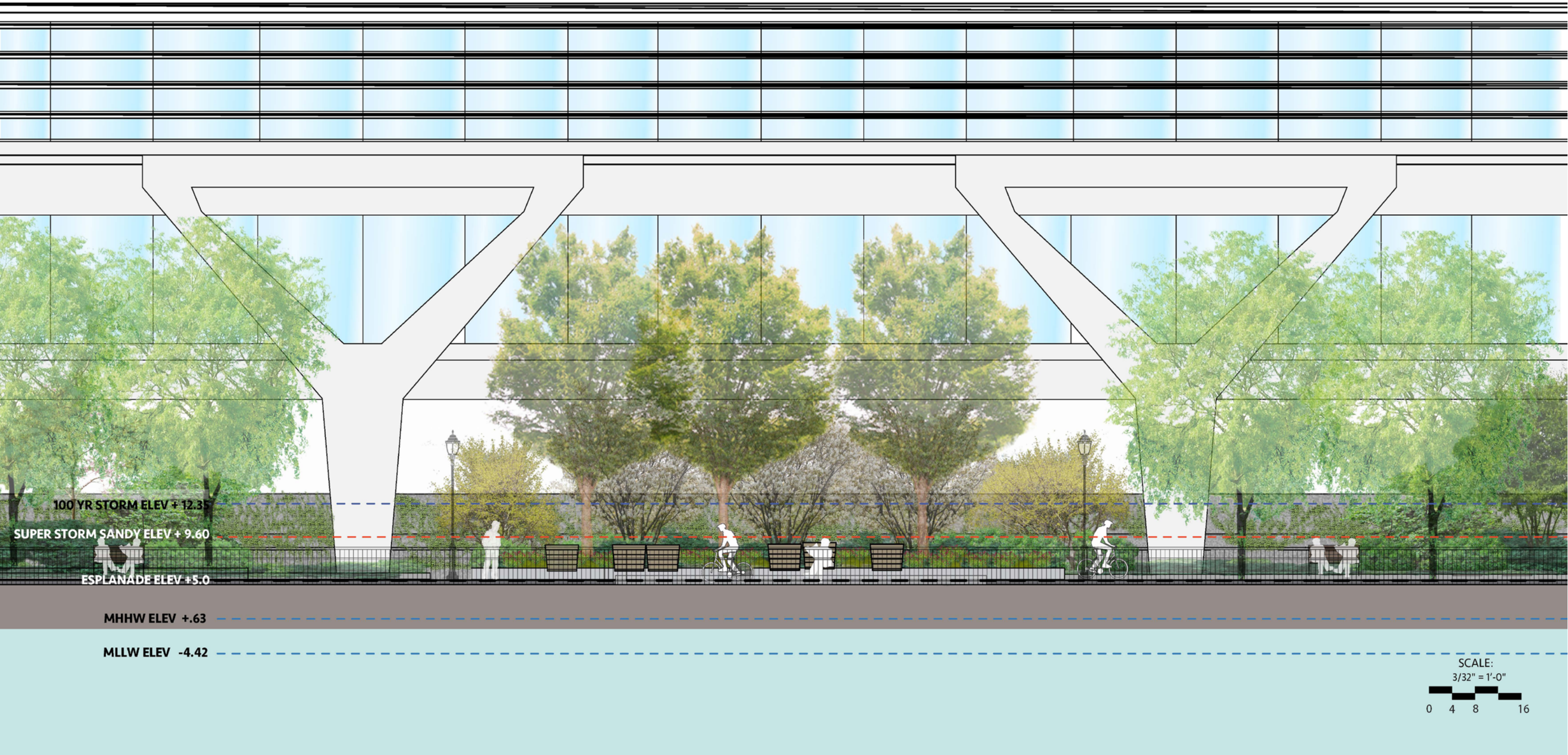


6. SOLAR EMERGENCY CALL BOX



7. DOT TYPE B LIGHT POLE

ESPLANADE - PROPOSED ELEVATION



ESPLANADE - LOOKING NORTH



ESPLANADE - LOOKING SOUTH



SCHEDULE UPDATE

- PREPARE SITE FOR BULKHEAD REPAIR : JUNE 2015
- START BULKHEAD REPAIR : JULY 2015
- COMPLETE BULKHEAD REPAIR : FALL 2015
- START ESPLANADE CONSTRUCTION : FALL 2017
- COMPLETE ESPLANADE CONSTRUCTION : SPRING 2018

THE ROCKEFELLER UNIVERSITY EAST RIVER ESPLANADE

COMMUNITY BOARD 8 SCHEDULE UPDATE